

LAXTON PARISH COUNCIL

www.laxtonpc.org.uk

Clerk: Alan Bravey, 3 Ruskin Way, Brough, East Riding of Yorkshire, HU15 1GW

Telephone: 07932 016856 Email: laxtonpc@btinternet.com

18/02/2021

To: All Members of the Council

You are summoned to attend the meeting of **Laxton Parish Council** that will be held at the on **Wednesday 24 February 2021 at 7:00pm** to transact the business set out below. The meeting will take place via Zoom Video Conferencing because COVID-19 social distancing restrictions prevents the Parish Council from physically meeting. The Agenda is as set out below.

Members of the public and press are welcome to attend and may raise issues with the Council in the Public Participation period. Please click on the link below to join the meeting, or copy and paste into your browser:

<https://us02web.zoom.us/j/8820584062?pwd=Y0xZanNrSnEyTXhhNUUpwaXFvTEtXQT0>

You will be prompted to enter the meeting **ID 882 058 4062** and the meeting password **251120**. Alternatively, you can **join from your landline or mobile telephone** by dialling **0330 088 5830** and entering the meeting ID and password when prompted.

Members of the public and press are welcome to attend and may address the Council during the public participation section.

Yours sincerely



Clerk to the Council

A G E N D A

1. To carry out a roll call and to receive apologies for absence
2. To record declarations of interest by any member of the council in respect of the agenda items below.
3. To receive and sign the Minutes of the Parish Council Meeting, held on Wednesday, 6 January, 2021 as a true and correct record

LAXTON PARISH COUNCIL

www.laxtonpc.org.uk

Clerk: Alan Bravey, 3 Ruskin Way, Brough, East Riding of Yorkshire, HU15 1GW

Telephone: 07932 016856 Email: laxtonpc@btinternet.com

4. Public Participation - to temporarily suspend the meeting to receive questions from the public.
5. To agree to reopen the meeting following suspension
6. To receive an update from the Clerk
7. To receive an update from Parish Councillors
 - Laxton Whatsapp Support Group
8. To receive an update from Ward Councillors
9. To discuss the following correspondence:
 - i. ERNLLCA Newsletter
 - ii. ERYC Lock down guidance
 - iii. ERYC Opportunity to Comment on 1) LGA Members Code of Conduct and 2) Draft Flood Risk Sequential and Exception Test.
 - iv. ONS, National Census 21st March.
 - v. ERYC Approval of Planning Permission- Variation of Plans, Laxton Garage
 - vi. ERYC, Change in Virtual Meeting Law from 7th May
 - vii. Humberside Police, Newsletter
 - viii. Office of Police and Crime Commissioner, Newsletter
 - ix. ERYC, Devolution Information
10. To consider planning application Erection of an agricultural storage building, Metham Hall Farm Metham Lane Laxton East Riding Of Yorkshire DN14 7YB
11. To raise any highways, dykes or drainage issues
 - Condition of Trandy Lane
12. To approve the schedule of accounts for payment
13. To agree any agenda items for the Parish Council meeting on Wednesday 24 March 2021

LAXTON PARISH COUNCIL

7.00pm 6 January 2021

PRESENT: Councillors Bray (Chair), Goulden, Sweeting and Yarrow.

Clerk: Alan Bravey

The Parish Council met virtually using Zoom due to the COVID-19 restrictions.

1/21 DECLARATIONS OF PECUNIARY AND NON-PECUNIARY INTERESTS

– There were no declarations of interest.

2/21 MINUTES OF PREVIOUS MEETING – Resolved – That the minutes of the meeting of the Council held on Wednesday 25 November be confirmed as a correct record and signed at a later date by the Chair.

3/21 PUBLIC PARTICIPATION- There were no members of the public present.

4/21 MINUTES OF THE PERSONNEL SUB-COMMITTEE – Resolved – That the minutes from the Personnel Sub-Committee meeting held on the 25 November should be amended to show that Councillor Sweeting chaired the meeting, and then approved along with all the recommendations therein.

5/21 CLERK UPDATE – It was noted that ERYC could only enforce the requirement for a dropped curb following a site visit or photographic evidence.

6/21 PARISH COUNCILLOR UPDATE – There were no Parish Councillor updates.

7/21 WARD COUNCILLOR UPDATE – There were no Ward Councillor updates.

8/21 CORRESPONDENCE - Resolved – (a) that the following correspondence should be received by the Council:

- i. Police Crime Commissioner, Newsletter
- ii. Police Crime Commissioner, Consultation on setting policing priorities for additional policing teams:
- iii. ERNLCCA, Newsletter
- iv. Humberside Police, Newsletter
- v. ERNLCCA, Planning Training Sessions:
- vi. ERYC Planning Approval - Erection of a dual-pitched tiled roof, The Villa Station Road Laxton
- vii. ERYC, Withdrawal of Planning Application: holiday cottage \ camping pod, Dairy Farm West Lane Saltmarshe

b) that the Parish Council priorities for local rural policing were burglary (including both dwellings and outbuildings), theft of and from machinery or equipment and anti-social use of

motor cycles / quadbikes.

9/21 **HIGHWAYS, DRAINS AND DYKES – Resolved** – that the Clerk would i) report the need for a street cleaner and weeds growing in gutters and ii) advise the local resident of the road safety concerns raised that had been raised as a result of a parked car.

10/21 **ACCOUNTS FOR PAYMENT – Resolved** – That i) it would be noted that the following pre-approved transactions had been paid:

- a. Clerk, Expenses – Office 2019 Home and Business - £54.99
- b. Dixons Retail – Purchase of Laptop - £528.99

ii) that the following accounts should be paid:

- a. Clerk, December Salary - £131.04
- b. HMRC – PAYE December - £37.80

11/21 **2021/22 BUDGET – Resolved** – i) That the 2021/22 budget should be approved and that the Precept Demand should be set at £7545, which meant that property would pay the same amount of precept as 2019/20.

12/21 **ITEMS FOR NEXT AGENDA – Resolved**– i) That the next meeting would be held on 24th February 2021.

SIGNED:

DATE:

Laxton Parish Council Correspondence Record

3 January 2020 – 18 February

The Clerk will circulate correspondence when considered appropriate. If Councillors would like to see a copy of correspondence that has not be circulated, please notify the Clerk on laxtonpc@btinternet.com on 07932 016856.

Date Received	Attached?	From	Purpose of Correspondence
6 January 2021	Y	ERNLLCA	Newsletter
11 January	N	ERYC	Lock down guidance
18 January	N	ERYC	Opportunity to Comment on 1) LGA Members Code of Conduct and 2) Draft Flood Risk Sequential and Exception Test.
20 January	N	ONS	Asking for support in promoting the National Census on the 21 st March.
21 January	N	ERYC	Approval of Planning Permission- Variation of Plans, Laxton Garage Front Street Laxton East Riding Of Yorkshire DN14 7TS

9 February	N	ERYC	Law that allows Parish Council meeting to be held virtually will expire on the 7 th May. Any meetings held after the 7 th May must be physical. AGM must be held in May, but can be held virtually from 1-6 May. Parish Assembly can be virtually from 1 st March to 6 th May or physically from 7 th March to 1 st June. Hybrid virtual / physical meetings can be held so long as there is a quorum at the physical meeting. Councillors attending virtually would be able to comment but not vote.
9 February	N	ERYC	Planning Application: Erection of an agricultural storage building, Metham Hall Farm Metham Lane Laxton East Riding Of Yorkshire DN14 7YB
10 February	Y	Humberside Police	Newsletter
12 February	Y	Office of Police and Crime Commissioner	Newsletter
17 February	Y	ERYC	Devolution Information



Serving our communities to
make them safer and stronger

Parish/Town News Release

Howdenshire - Update for February 2021

1. Crime and ASB

Unfortunately due to technical changes we are unable to provide the monthly information at the moment. However you can obtain Crime and ASB data for your own area by visiting www.police.uk , clicking on "whats happening in your area" and enter your postcode.

2. Crime issues of particular note

- Front and rear number plates were stolen from a vehicle in Newport.
- Catalytic convertors were stolen from two vehicles in North Cave (one vehicle was parked in a car park near North Cave and the other was in church Street.)

3. Community Priorities.

The Neighbourhood Policing Team meets regularly with partners to ensure we have a multi-agency approach to local issues, individuals and problem solving. These meetings are attended by local partners, including Humberside Fire and Rescue Service, Youth and Family Support, Housing Officers, Environmental Health and the East Riding Anti-Social Behaviour Team, among others. We share information and resources to deal with local neighbourhood issues, in particular, those identified as causing the most harm in the community.

High Visibility Patrols

We have been patrolling the Howdenshire areas during our shifts. We are aware that there are many vulnerable people that live within the community and we want to reassure them that we are still here for you. You have probably seen us posting on Social Media on a regular basis as a way of keeping you all updated

4. Crime Reduction Advice

Telephone / Cold Call Scams

These 'cold call' scams typically involve fraudsters deceiving victims into believing they are speaking to a police officer, a member of bank staff, or a representative of another trusted organisation, such as a computer company in order to steal money. Always be on your guard if you receive a cold call and are asked for any of the following:

- Personal or financial information, eg full name, date of birth, address, passwords, bank details, security numbers etc.
- You are asked to transfer or withdraw money.
- You are asked to hand over your credit / debit card or cash to someone eg a courier who will call and collect it.
- You are told that the caller requires access to your computer as it needs an "update" adding or that the caller needs to validate your copy of Microsoft Windows.
- You are told that you have won something eg lottery winnings or a competition and so the callers needs your bank details to arrange to pay your prize money. (If you haven't entered any competitions then you can't have won anything!)

The bank or the police will never tell you to take such actions or ask you for financial information. If you are asked to do any of these things, someone is trying to con you!! If in doubt, call back the organisation on a number you trust, but do it on another phone or leave it at least five minutes before you make the call. This is important because criminals are able to keep the line open for two minutes after you put down the phone, which means you could end up inadvertently talking to the criminal or their accomplice again.

For other hints and tips log onto the **www.actionfraud.police.uk** website, which lists an A – Z of different fraud types as well as tips on how to protect yourself from fraud.



Serving our communities to
make them safer and stronger

Parish/Town News Release

5. News and Appeals

• Catalytic converter thefts - how to protect your vehicle

We are warning motorists to be on their guard following a number of reports in the last month of catalytic converters being stolen in our areas (Goole, Pocklington and North Cave).

While all cars are potentially at risk, thieves are most likely to target hybrids, where the catalytic converter is used less and the metals are less likely to be damaged, or vehicles with a higher ground clearance, such as vans and SUVs.

We are investigating all the reports we have received and are following up a number of lines of enquiry. In the meantime, we want to help prevent further thefts from occurring, so please pass on our advice to anyone you think may be at risk and, if you see anyone acting suspiciously, please call us on our non-emergency 101 line.

Among the steps you can take to protect your vehicle are:

- Speak to your local garage about having suitable locks or guards fitted. They can also advise you on getting your catalytic converter security marked to make it harder for thieves to dispose of.
- Park your car in a locked garage where possible. If that isn't an option, park in a well lit and busy area.
- Park with your exhaust close to walls, fences or high kerbs, which will make it harder to access.
- Catalytic converters are at the front of your vehicle, so park facing walls or other vehicles where possible, which will make it harder to remove.

• Rural Task Force- East Riding of Yorkshire

Protecting our rural communities, wildlife and heritage.

Humberside Police have set up a new dedicated unit focusing on tackling rural, wildlife and heritage crimes within the East Riding of Yorkshire.

The **Rural Task Force** will be based at Driffield Police Station, ideally placed within the 'Capital of the Wolds' and will consist of four police constables and one sergeant.



The team will be targeting those who chose to commit crime within our rural communities

The Inspector leading the Rural Task Force is Neighbourhood Police Inspector Jon Powell, he said, "Over the years Humberside Police have worked tirelessly to tackle rural crime and help to make our rural communities feel safer. This new team will focus on disruption of criminal activities, apprehension, arrest, charging and prosecution of offenders. All with the aim of deterring others from committing similar offences.

This will send out a clear message that rural, wildlife and heritage crime will not be tolerated. The team will be building on existing relationships with local rural communities, groups and businesses which will develop and support them in tackling crimes that affect them most."

6. Surgeries

Online Community catch up – Zoom Meetings

Insp Powell will be hosting a half-an-hour online community catch up via Zoom and he is inviting you to join him. There will also be the opportunity to ask any questions and raise any concerns/issues you may have. The next meeting for the Goole/Howden & Villages will be held on the 16th February 2021 (14:00hrs)



Serving our communities to
make them safer and stronger

Parish/Town News Release

For details on how to join the meeting , go to the Humberside Police website and type in ZOOM in the "search the site" section and this will take you to the "on line community catch up page" – click on this link for further information on how to join the meeting or click on the link: (<https://www.humberside.police.uk/CommunityCatchUpNorthbank>)

We encourage everyone to follow the Government guidance. You will still see us out and about as we continue to do our job and keep our communities safe. As always there are a number of ways you can get in touch with us if you need us.

Stay informed through our social media channels, find us on [Twitter](#), [Facebook](#) and [Instagram](#):

<https://www.humberside.police.uk/teams/howdenshire>

Facebook – Humberside Police – East Riding of Yorkshire West

Twitter - Humberside Police – East Riding of Yorkshire West - @Humberbeat_ERYW

For incidents that don't require an immediate response call our non-emergency 101 line. You can also report [non-emergency crimes online](#) via our reporting portal. In an emergency always dial 999.



County Hall Beverley East Riding of Yorkshire HU17 9BA Telephone (01482) 393939
www.eastriding.gov.uk
Caroline Lacey Chief Executive

To all Town and Parish Councils

Your Ref:
Our Ref: CL/TAC07656/RES
Enquiries to: Caroline Lacey
E-Mail: caroline.lacey@eastriding.gov.uk
Date: 17 February 2021

Dear Town and Parish Clerk

Devolution Proposals

Following the article in Your East Riding on the Devolution Proposals that we were invited to submit to Government with Hull City Council, I have had a number of requests from Parish and Town Councils for more information. I have attached to this email a copy of the summary of the proposals and a frequently asked questions document that your members may find helpful.

The councils were invited by Government to submit proposals in respect of a potential devolution of powers and funding from Government to Hull and East Riding. If a devolution deal can be agreed for Hull and the East Riding and based on what has been achieved in other deals, a deal will guarantee substantial, long-term funding which will allow us to invest in public transport, support business, improve skills and living standards and also help us tackle climate change. It will also mean more of the decisions with major impacts on our area which are currently taken by the Government in London will be taken here.

The devolution proposals were submitted in September 2020 and to date we are still awaiting a response from Government as to whether or not we can proceed with further discussions to see if any agreement can be reached. At this stage, the proposal is a statement of intent and there are no binding commitments on the Government or either council.

If a devolution deal can be reached this would require the formation of a combined authority with a directly elected mayor and Cabinet drawn from the two authorities. The combined authority would oversee the powers and funding that were being devolved by Government. This does not mean that Hull and East Riding councils would merge. The two councils would remain separate and continue to operate the vast majority of their existing services separately but some decisions on big, strategic matters affecting the whole area would be taken by the combined authority.

However, before either Council can consider setting up a combined authority there is a process that has to be followed -

Stage 1

Review: a group of councils proposing to establish a combined authority must carry out a governance review, including consultation, in order to decide whether or not to proceed.

Continued/

Stage 2

Scheme preparation: having decided to proceed, the councils must prepare and publish a scheme for the combined authority.

Stage 3

Order making process: the Secretary of State introduces in Parliament a statutory instrument establishing the combined authority.

I hope this information is useful and answers some of the questions that are being raised. Once we have a response from Government and have a clearer indication of timescales in terms of consultation, I will write to you again.

Kind regards

A handwritten signature in blue ink, appearing to read 'cshacey'.

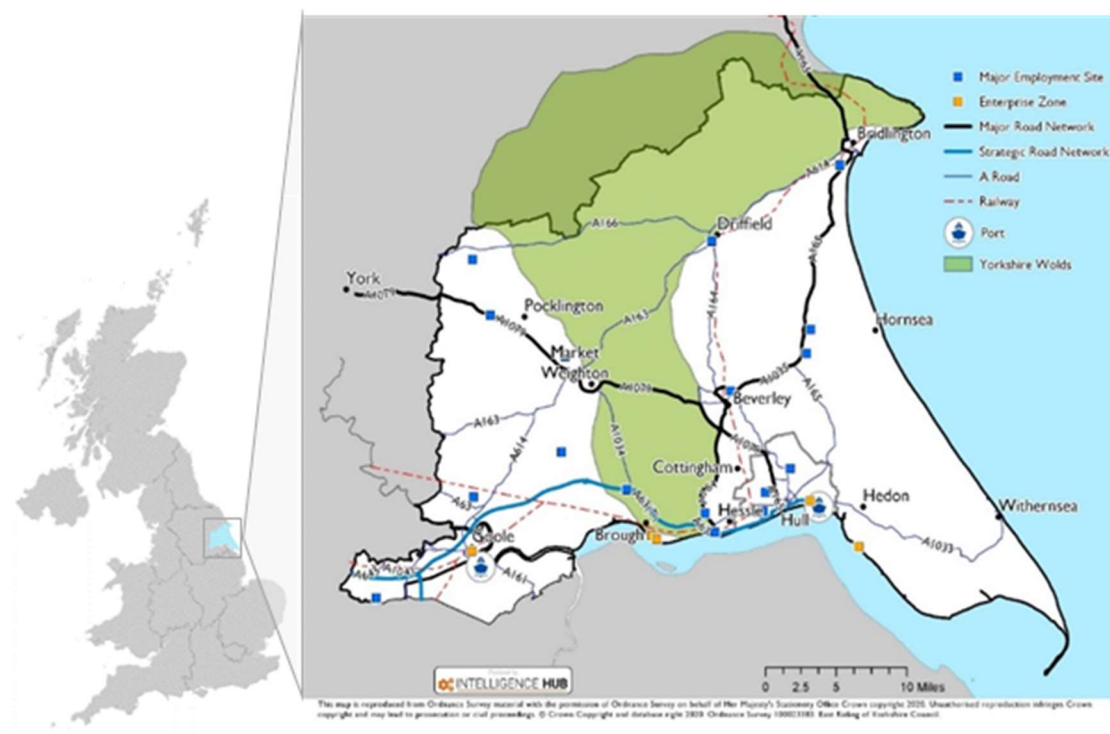
Caroline Lacey
Chief Executive

Enc.

Hull and East Yorkshire Mayoral Combined Authority

Executive Summary of our proposal to Government

4 September 2020



1 Introduction

1.1 Our proposal for an ambitious Mayoral Devolution Deal

This document summarises Hull City Council's and East Riding of Yorkshire's Council's joint proposal for the creation of the Hull and East Yorkshire Mayoral Combined Authority (MCA).

A Mayoral Devolution Deal offers the opportunity to leverage our sectoral strengths in the transition to a more productive, low carbon economy whilst levelling up the living standards and economic opportunities for our most deprived communities. This will build on a long and successful history of partnership working, focused on our combined strengths in sustainable energy generation, flood risk and environmental management and water-sensitive regeneration.

Through dynamic, forward-looking and confident leadership, backed by increased and pooled financial resources and a well-embedded partnership with Government, we will work to deliver a new sense of pride and ambition, and promote Hull and East Yorkshire as a vibrant, culturally rich, outward-looking and sustainable place to live and do business, by:

- **Capitalising on our existing assets, including our world-leading digital infrastructure, to make our businesses more competitive and more productive**, and change our economic trajectory post the COVID-19 crisis.
- **Investing in people and enabling talent to increase access to economic opportunity, and in turn reducing local levels of under-employment and narrow our local productivity gap.** Levelling up our local economy by enabling more residents to deploy skills in higher paying jobs and enabling our area to fully contribute to levelling up the UK.
- **Supporting innovation and business growth in our key sectors to enhance their competitiveness and increase productive across our economy.** This includes fostering increased Research and Development (R&D) and commercialisation and creating a dynamic climate for the creation and development of microbusinesses and Small and Medium-sized Enterprises (SMEs) across all sectors.
- **Raising living standards for everyone, based on well-targeted, long-term interventions delivering balanced and inclusive growth**, making use where appropriate of the community-led approaches we have embedded through existing EU-funded programmes.
- **Focussing on work/life/leisure balance for our residents**, with easy access to the services of a city and with great connections between the city and East Yorkshire's rural and coastal hinterland, and to the rest of the country.
- **Enable healthier and more content communities.**

1.2 COVID-19 Impacts and Recovery Planning

The COVID-19 pandemic has had a significant impact on the economy throughout Hull and East Yorkshire. Independent analysis shows that while some sectors have been less affected - such as manufacturing, transportation and storage and health, others such as tourism, leisure and hospitality – which are critical employers in our area – have been the hardest hit.

Our devolution proposals will provide local resources that will enable targeted investment in our city and town centres, infrastructure and skills base in order to drive a rapid, green recovery. This needs to go alongside comprehensive and sustained Government intervention.

1.3 Our Area

The Hull and East Yorkshire area is home to 600,300 people and represents a dynamic economy comprising the city of Hull and the rural and coastal setting of East Yorkshire. More than half our population (314,018 in 2011) live in the city's wider built-up area (as defined by ONS), the remainder living in over 300 market and coastal towns, villages and hamlets.

With annual GVA of £13bn and 24,240 businesses, our economy represents 10.5% of Yorkshire and the Humber's GVA and 3.6% of the North's output. Production industries account for almost 30% of our GVA, with manufacturing (at 22%) being more than double the UK average.

Our Local Economic Assessment confirms our most important sectors as: Manufacturing, engineering and assembly; Chemicals; Low carbon technologies; Food and drink, including intensive farming, horticulture and fishing; Health technologies, pharmaceuticals and healthcare; Construction; Ports and logistics; Knowledge and digital economy, including creative industries; Tourism and culture.

Although these key sectors punch above their weight across many performance metrics, critical challenges remain. Overall productivity is below the national average, sitting at 85% for Hull and 87% for East Riding.

Our area has a stable population and workforce, with an employment rate at 75.2% (pre-COVID-19), but the median annual salary is only 87% of the national average. The relative lack of higher paid jobs limits our ability to retain and attract high skilled workers. We face the structural challenge of a persistent low skill, low wage economy in some areas. Over a third (36%) of LSOAs are within the 20% most deprived nationally, and overall qualification levels remain below the national average.

2 A Summary of Our Proposals

2.1 Overview

Our proposals are based around four key strategic themes, developed from a detailed SWOT analysis and Local Economic Assessment.

Enhance connectivity to create an integrated, low-carbon transport network, ensure the continued success of our ports and develop our world leading digital capabilities to support collaboration and new ways of working.

Increase productivity by providing our workforce with the skills needed for the future as we transition to a zero-carbon economy, as well as supporting business innovation and competitiveness.

Promote inclusivity which creates economic opportunities for our most deprived communities and provides decent homes for all, addressing the persistent cycle of poverty, poor health and limited aspiration.

Deliver a sustainable future through clean energy generation, sustainable development, climate adaptation and a strategic approach to harnessing our natural capital assets.

For each theme we have set out a range of financial and non-financial asks, which are summarised in the table at the end of this Executive Summary. The detailed proposal document for a Mayoral Devolution Deal sets out the strategic context, case for change and further details underpinning our asks for each of these themes.

3 Our Proposals for Devolved, Place-based Funds

3.1 Introduction

Providing these settlements as devolved, multi-year funding would support a more strategic, flexible and integrated approach to planning and investing in interventions that will drive productivity and inclusive, sustainable growth across our area.

3.2 30 Year Gain Share / Investment Fund

We are seeking a devolved Gain Share Investment Fund of £25m per annum over 30 years (£750m total), with 100% revenue funding, which will provide the maximum flexibility and collateral with which to plan major investments whilst responding to unforeseen opportunities that align with the MCA's investment priorities. In line with other Deals, we are seeking to draw down the Gain Share funding prior to Mayoral Elections.

3.3 Devolved, multi-year Shared Prosperity Fund (SPF)

We are seeking a locally controlled, devolved funding allocation of £20m per annum over the duration of the Government's SPF programme. Locally tailored Inclusive Economy Programmes, including a Young People's Work Guarantee, will tackle inter-generational disadvantage, improve access to employment, and boost worker productivity. The scale of funding is based on 2014-2020 EU Structural and Investment Fund (ESIF) allocations, taking account of current LEP overlaps.

A devolved funding allocation from the SPF will also ensure business support activity is fully integrated through a new Growth Hub covering Hull and East Yorkshire, spanning enterprise programmes, SME decarbonisation, supply chain development and workforce skills, and providing a coherent and simplified framework for business support across our urban, rural and coastal areas.

3.4 Devolved, multi-year settlement from Government's future Capital Growth Programmes

LGF funding has been a critical resource for delivering our infrastructure and economic development priorities over the last 5 years, particularly in relation to strategic transport, flood risk management and housing and regeneration investment, which together account for more than 80% of our total LGF spend. **We want to build on this track record and are seeking a devolved, £22m per annum multi-year funding settlement from the Government's future Capital Growth Programmes to extend or replace the LGF from FY22 onwards.**

3.5 Capacity funding to scale up strategic planning and delivery

3.5.1 Mayoral Combined Authority arrangements

The establishment and operation of a Mayoral Combined Authority necessitates a step-change in both our capacity and capability to plan and deliver strategically. We will use the opportunity presented by the creation of the MCA to drive efficiencies and pool resources. However, unlike other metropolitan devolution deals, we do not have an existing Combined Authority, Integrated Transport Authority or Passenger Transport Executive in place to build upon. **We are determined to deliver the devolution deal at pace, but to do so we require an initial injection of revenue funding of £2m across FY22 and FY23, which will be drawn down once the shadow MCA is in place.**

3.5.2 Local Enterprise Partnership arrangements

The MCA will work with a new Local Enterprise Partnership (LEP) for Hull and East Yorkshire, which will be in place by 1 April 2021. **We are seeking a Government funding allocation of £500k per annum from FY21 for the Hull and East Yorkshire LEP, which will be matched with £100k of local funding from the two Local Authorities, as well as support in-kind from private sector partners.**

4 Connectivity

4.1 Context

Strong connectivity hinges on the performance of both our transport and digital networks to provide access to employment and trade opportunities, within Hull and East Yorkshire, across the UK and internationally.

To achieve our overarching objectives for inclusive, sustainable growth we need a transport network that is reliable and efficient, and one that works in tandem with high quality and wide-spread digital connections. It is also necessary in order to adapt to new ways of working post COVID-19 and to make the area resilient to future economic, environmental or social shocks.

4.2 Our Offer to Government for Connectivity

- The MCA will take responsibility for the development of an area-wide Strategic Transport Plan; public transport functions; and the coordination of a Key Route Network of local authority roads.
- The Strategic Transport Plan will form a key element of the MCA's Carbon Reduction Strategy and integrate with the MCA's single Spatial Development Plan to deliver our sustainable, inclusive growth priorities.
- The MCA will play a proactive part in delivering our identified priorities as agreed with Transport for the North and the DfT's new Northern Transport Acceleration Council and spearhead a partnership approach with Government to developing new rail technologies to achieve decarbonisation of rail routes.
- The MCA will establish a Digital Partnership involving KCom, the University of Hull, and the Smart City collaboration with Connexin and Cisco to establish a leading-edge Digital Strategy.

4.3 Our Connectivity Asks

4.3.1 Transport

- **Devolved Transport Powers and a devolved, consolidated local transport budget to the Mayor and the Hull and East Yorkshire Combined Authority.** The Mayor will be responsible for a devolved and consolidated local transport budget, including all relevant devolved highways maintenance funding, through an initial 5-year settlement – recognising that statutory responsibility for highway maintenance will remain with the two Local Highway Authorities.
- **A new £60m Highways Maintenance Backlog Fund over 5 years.** Hull and East Yorkshire currently have an estimated annual shortfall of £12m per annum. The Fund will be targeted to the most pressing maintenance needs on priority routes, including for bridge maintenance and improvements to pedestrian / cycle provision.
- **A new £200m Integrated Transport Settlement over 5 years (FY22-26), and early revenue funding to support the development of a low carbon, locally prioritised investment programme.** This funding amount is based other MCAs' allocations, taking account of the size of our economy. The funding will be used to implement a programme of strategic, integrated, low-carbon transport interventions.
- **A new £60m Active Travel and Bus Fund to spearhead a green recovery.** Interventions will be integrated with our 5-Yearly Transport Settlement with a clear focus on improving bus and active transport provision within our area, working closely with bus operators to improve services and invest in a low-carbon fleet.

- **Enhanced joint-working with Highways England to establish and progress shared priorities for the Strategic Road Network (SRN) and local Key Route Network.** We are seeking to: identify shared priorities for managing and investing in the SRN, based on a definition that better reflects key local economic connections and develop joint-working arrangements for scheme development, case-making, and finalising funding for key local projects. This includes Jocks Lodge at the intersection of the A1079 and A164, and upgrades to the A1079.
- **EV Charging Infrastructure Powers.** Including powers under the Automated and Electric Vehicles Act 2018 requiring large fuel retailers to provide EV charging points and joint working with DfT and MHCLG to facilitate a 'road to zero' approach for rolling out public and private EV charging points.
- **Provision of relevant Mayoral powers in the Bus Services Act 2017.** Including the ability to develop an integrated local transport system along with integrated, smart ticketing, as well as the ability to introduce Bus Franchising. Subject to business case approval we may also seek of transfer of Bus Service Operators' Grant funding and functions to the MCA.
- **Enhanced joint-working with Network Rail and DfT to progress strategic rail investment** to help bring forward electrification, gauge enhancement and a new parkway station at Melton on the North Transpennine Rail Corridor; further feasibility studies into the reconstruction of the Hull-Beverly-York (Minsters) line; Initial scheme development for light rail and additional rail halts; and pilot projects to progress new low carbon technologies.
- **Joint working with DfT for freight and waterways projects.** Including to secure a replacement to the Marco Polo EU programme / former freight facilities grant, and to agree to joint working with DEFRA/DfT to further develop our Waterways Partnership approach, supporting the objectives of the Government's Clean Maritime Plan.

4.3.2 Digital

- **Joint working with DCMS and BDUK to ensure all households, business and public services across our area can access superfast broadband,** building on Hull's Smart City credentials, and supporting our overall goals to turn Hull and East Yorkshire into a 'Smart Place'. This will address the variable nature of Superfast fibre broadband and mobile connectivity in rural parts of the East Riding where private sector investment is unviable.

5 Productivity

5.1 Context

Supporting the expansion and competitiveness of our growth sectors is key to realising the transition to a high-value, low carbon economy and levelling up the economic opportunity and living standards for all our communities.

5.2 Our Offer to Government for Productivity

- A structured and seamless transition to establish a Hull and East Yorkshire Growth Hub, whilst sustaining delivery of EU-funded programmes on their existing LEP geography until 2023.
- Ensure that the range of sector-based innovation partnerships currently supported by the Humber LEP is sustained and increase the number of collaborations between local businesses and local research institutions.

- The MCA and Hull and East Yorkshire LEP will develop specific collaborations with adjacent MCAs/LEPs to add resilience to and grow the tourism, farming, fisheries and food processing sectors.
- Working with providers and employers, the MCA will develop an overall Skills Strategy, aligned to that of adjacent MCAs/LEPs that raises the proportion of higher-level skills and reduces skills gaps in our key sectors.

5.3 Our Productivity Asks

5.3.1 Skills

- **Devolution of the Adult Education Budget** in line with other MCA Devolution Deals to enable MCA control and influence over local training provision to ensure it is aligned with locally identified needs. We want to work with Government to support our preparations to take over relevant functions; and on an ongoing basis to develop dialogue about future funding formulas, reporting requirements, and adult education policy more widely.
- **Joint working with Government on post-16 and T level provision.** We are seeking to work with DfE and BEIS to review post-16 education provision and funding specifically for Hull and East Yorkshire, to improve choice and levels of attainment throughout the area.
- **Greater control of apprenticeship levy underspends.** We are seeking support from Government in our efforts to increase the number of apprenticeships available in our area through greater local control of apprenticeship levy underspends. The uses of these funds will be critical to our proposed Young People's Work Guarantee Programme (see inclusivity below), enabling bespoke interventions such as a wage subsidies.
- **Control of career services budgets and coordination with the Careers and Enterprise Company.** We are seeking to align all careers support funding to provide a cohesive careers education, information, advice and guidance system that can meet the needs of both young people and adults and align to employer priorities in our area.
- **Working with the Government on the roll-out of the National Skills Fund.** The National Skills Fund offers the opportunity to work with Government on the design and roll-out of the Fund to ensure that it effectively helps local people to respond to the changing labour market and supports our shared ambitions for clean growth.

5.3.2 Innovation and Business Support

- **Enhanced joint working with UKRI, BEIS and wider Government departments to spearhead innovation and business support for key sectors of the Hull and East Yorkshire economy.** We are seeking an enhanced relationship with Government which provides greater local influence over future national funding programmes and increases information sharing in relation to our key sectors.
- **Working with DCMS and Visit England as part of the Government's Tourism Sector Deal to fast track the development of a new Tourism Action Zone which targets city, coastal and country locations in our area and supports a sustainable, post-COVID-19 tourism offer.** This would include piloting policy initiatives and financial incentives in conjunction with our area's tourism businesses and Business Improvement Districts.

5.3.3 Trade and Competitiveness

- **Working with DIT to establish an International Trade Forum, joint plan and join up activity around key sectors and market priorities for our area.** A new International Trade Forum to bring together existing and new activity.
- **Working with Government to fast track the establishment of a bespoke multi-site Freeport model for the Humber Estuary.** The Freeport will seek to maximise value-added activity from the Humber ports and will support and incentivise new manufacturing, innovation and higher-value jobs, with the potential for supply chain development and increased exports.
- **Engagement with the DfT, Marine Management Organisation, Environment Agency and Natural England on our proposals for a new, nationally significant Yorkshire Cruise Terminal.** We are seeking acknowledgement from the DfT, MMO and EA of the strategic significance of the project for UK Plc, and continued engagement as we develop and finalise the business case, taking account of potential long-term impacts of COVID-19 on the cruise sector.

5.3.4 Placemaking

- **Providing the Mayor with broad powers over Land Assembly, Compulsory Purchase and Mayoral Development Corporations to support housing and regeneration in the right places.** We are seeking broad and accelerated powers for the Mayor to unlock and develop employment space, housing and infrastructure which facilitates growth in strategic, sustainable locations.
- **Mayoral powers in respect of ports development, which will enable the Mayor to co-develop and sign off on all Port Development Plans and/or Local Development Orders.** We are seeking specific powers in respect of ports development, which will provide the Mayor with land assembly and compulsory purchase powers in relation to port land, subject to the agreement of the Combined Authority constituent authority where the relevant land is located, and the consent of the Secretary of State for Housing, Communities and Local Government.

6 Inclusivity

6.1 Context

Our ambitions for inclusive economic growth are to level up our communities and ensure that all our people can benefit from, and contribute to, the growth and prosperity of our area.

Social cohesion is relatively strong across our area, but we also have some of the most extreme variations in economic prosperity in the country and key challenges related to inter-generational worklessness and path-dependency. Health inequalities and an ageing workforce are also major challenges and underline the need to retain and attract younger workers with the skills and adaptability to respond to economic opportunity.

The effects of the COVID-19 pandemic and lockdown on our more deprived and vulnerable places and communities underlines the need for urgent action as well as step-change in the medium to longer term. Through devolution, our ambition is to build on our track record of intervention to deliver a long-term, transformational Inclusive Economy Programme which integrates these areas of intervention. This involves:

- **Taking a more holistic, long-term approach to intervention** – investing in an ambitious and deliverable programme in the next 5 years as part of a 30-year strategy for improving the life chances and aspirations of our people and addressing inter-generational path dependency.

- **Bringing together multiple sources of devolved and new funding which integrate capital and revenue initiatives** across housing and community renewal, regeneration, culture and heritage, skills and employability. This approach will in turn drive better economic outcomes and reduce dependency costs, which will ultimately deliver better Value for Money (VfM).
- **Developing a long-term partnership with Government which spans multiple departments** in order to align local and national initiatives as well as inform and co-design national approaches, which will also help to maximise outcomes and VfM.

6.2 Our Offer to Government for Inclusivity

- Through the MCA's Inclusive Economy Programme we will deliver a fully integrated, long-term programme of interventions to support individuals and communities, building on the approaches which have worked locally and adopting best-practice models internationally.
- Working with the private sector, the MCA will develop effective approaches to re-purposing town centres and promote their appeal as community and service hubs, along with a high-quality retail offer, to spearhead local economic recovery.
- The MCA will establish a Social Value policy and pilot the implementation of the proposed Social Value Framework for Central Government.

6.3 Our Inclusivity Asks

6.3.1 Employability

- **Joint working with DWP to establish a £15m per annum Young People's Work Guarantee Programme for Hull.** The Programme will be delivered by integrating many of the other asks, as well as further funding to expand on the DWP Youth Hub Model to develop a bespoke Active Labour Market Model for Hull; start-up and micro-finance to young entrepreneurs; wrap-around support for families and children those with specific needs, such as victims of domestic abuse.
- **Co-design of relevant DWP programmes in order to ensure national policy supports the aims of our long-term Inclusive Economy Programme.** Co-design of programmes targeting the most hard-to-help claimants through a formal agreement between DWP and the MCA.

6.3.2 Public Service Reform

- **Working with Government to support our ambitions for Public Service Reform and Social Value.** The MCA will seek to streamline and coordinate public sector services across Hull and East Yorkshire with the aim of driving better economic outcomes for residents, building on existing successes, which include the Early Intervention approach spearheaded by Humberside Police. We will also seek to integrate a social value model in our approach to delivering public services and would like to work with Central Government to continue to inform national Social Value policy through membership of the National Social Value taskforce.

6.3.3 Housing, Regeneration and Renewal

- **A new £25m Brownfield Land Fund from 2023/24,** which includes £5m of revenue funding to scale up our technical capacity, to unlock stalled, strategic brownfield sites which have the greatest potential to increase delivery of high-quality and affordable new homes and support our sustainable and inclusive growth objectives.
- **A new £100m Community Renewal Fund over the next 7 years.** This fund will invest in improving the existing housing stock and wider built environment for up to 5,000 homes in our most deprived areas.

- **A new £10m One Public Estate Fund.** The Fund will support a programme of interventions which: use existing public land to catalyse new development opportunities; repurpose existing public estate to better provide public services, and invest in improvements to the existing public estate stock.
- **Working with Homes England to increase the rate of rural affordable housing delivery in our area.** We are seeking to work with Homes England to identify the most effective approaches and support mechanisms to increase the rate of rural housing delivery in our area, and particularly in relation to affordable housing.
- **Increased flexibility over the use of Right to Buy receipts.** We are seeking an agreement for exemption in the 3-year restrictive period within which receipts must be used, as well as the ability to use receipts, matched with Homes England funding for any scale of viability-gap, enabling us to deliver up to 200 new affordable homes each year.
- **Confirmation of the full £25m allocation for the Goole Towns Deal.** We are seeking a commitment to the full Town Deal allocation for Goole, which will provide the opportunity to promote a comprehensive approach and offers the potential to borrow against the allocation and align other funding.
- **Working with Government to confirm a Future High Streets Fund allocation for Hull, and ongoing joint working.** Our £22m FHSF bid aims to redevelop a major city centre site to provide a hub offering new business support, learning and cultural facilities. Post-COVID-19, further investments will be required in order to support the success of the city as part of a green recovery.
- **A new £50m Coastal Towns Programme for Bridlington, Hornsea, and Withernsea.** We are seeking to invest in the economic prosperity of the East Yorkshire coast. A programme-based approach will enable us to undertake more strategic, long-term investment and underpin stronger, sustainable growth of our coastal communities.

6.3.4 Heritage, Culture and Community

- **£50m for the development and delivery of a new Culture and Heritage Fund.** Working in partnership with Historic England and Arts Council England, we will develop and deliver a new Culture and Heritage Strategy and ambitious investment programme which leverages our distinctive natural and cultural assets to enhance pride and wellbeing. Our investments will develop the local visitor economy, attract talent and leverage further private investment into the area.
- **Establish a long-term partnership approach with Historic England, Arts Council England and the National Lottery Heritage Fund.** Through this partnership approach, we will look to widen knowledge of the area's major archaeological and built heritage assets, ensure their conservation and interpretation and, through increased public access enable them to be financially resilient.
- **Joint working with Government to influence how the Voluntary and Community Sector is funded and sustained to support local service delivery.** We are seeking to work closely with DCMS and the Office for Civil Society to develop a clear and cohesive strategy for the Hull and East Yorkshire area which overcomes the currently fragmented landscape, secures efficiencies and develops more stable financial foundations for the sector.

7 Sustainability

7.1 Context

Sustainability underpins the previous three themes as well as offering new opportunities to make more use of our natural capital and develop a low carbon, circular economy. We have an excellent track record of local initiatives to identify risks and investment opportunities in climate change adaptation and carbon reduction, particularly focused on flood-resilience and decarbonisation of our existing housing stock and buildings.

We want to ensure that sustainability is at the centre of our COVID-19 recovery approach; helping our area to build back better in support of our long-term growth ambitions. We are keen to build on the recommendations of the Climate Change Committee, to quickly identify new carbon-reducing investment opportunities which can provide jobs and skills for the future and help mitigate the economic impact of the pandemic.

7.2 Our Offer to Government for Sustainability

- Development of an overarching Environment Strategy, covering similar ground to the Greater Manchester MCA Environment Plan, and building on existing collaborations relating to: **Mitigating climate change; Improving air quality; Sustainable consumption and production; Natural environment and Resilience and adaptation to climate change.** Under this strategy would sit detailed strategies and investment plans for each policy area.
- The use of Mayoral powers to create a Strategic Spatial Development Plan for Hull and East Yorkshire. The Plan will be a matter for local agreement, in line with the National Planning Policy Framework. The Plan will need to be approved by a unanimous vote of the Combined Authority constituent authorities.
- Establishing an area-wide strategic Climate Change team to provide advice and coordinate all government and local measures relating to climate change. Working with the University of Hull and other partners, this would form the basis for the establishment of a Centre of Excellence for zero carbon and advanced methods of construction.

7.3 Our Sustainability Asks

7.3.1 Low Carbon Placemaking

- **A new £10m Net Zero Carbon Innovation Fund.** The Fund will be integrated with the MCA's Environment Strategy and support pilot projects which involve: the roll-out of incentives for energy efficiency measures through the business rates and council tax systems; accelerating the adoption of Modern Methods of Construction and pre-manufactured housing; community-led behavioural change for energy and water consumption; local energy networks; energy saving innovations in the transport sector; and new natural capital approaches to carbon reduction and sequestration.
- **Strategic planning powers for the Mayor,** giving the Mayor the power to create a Strategic Spatial Development Plan for Hull and East Yorkshire, working in partnership with the Hull and East Riding Local Authorities. This will provide a holistic and coordinated approach to strategic land-use planning and strategic transport planning, providing a robust framework for the area's policies for sustainability, connectivity, productivity and inclusivity.

7.3.2 Flood and Coastal Risk Management

- **Working with DEFRA, the EA and other Agencies on holistic flood risk management.** We are seeking an approach that enables flood risk to be considered in an integrated manner across

risk management authorities and partner organisations. This will speed up the design and progress of flood mitigation measures and, increase overall efficiency from joined-up delivery of interventions.

- **Working with DEFRA and its Agencies to establish adequate funding for Shoreline Management Planning.** We are seeking to work with DEFRA and its agencies to ensure that funding mechanisms and criteria are responsive to the varied range of business operations and settlements along the East Yorkshire Coast and that they enable innovation in developing adaptation methods.
- **Working with Government to encourage the adoption of innovative approaches to partnership working in flood mitigation and management.** We will seek to work with Government to identify approaches for maximising partnership investment and planning to build on our innovative Living with Water Partnership, which has identified the potential for greater collaboration and smart investment in assets to provide wider community benefits and potential savings to consumers.

7.3.3 Natural Capital

- **Working with DEFRA to take forward place-based elements of the Environment and Agriculture Bills and enhance the role of Local Nature Partnerships.** We are seeking to work with DEFRA through a nominated relationship manager/team, to take forward place-based elements of the Environment and Agriculture Bills. We are also seeking DEFRA's direct input to a strategic and appropriately resourced Natural Capital partnership structure, which strengthens the resources of the Hull and East Yorkshire' Local Nature Partnership and enables full coordination with catchment partnerships and other DEFRA-sponsored activity by the MCA.

8 Governance

8.1 Key Principles

Establishment of the Mayoral Combined Authority for Hull and East Yorkshire is built on the following guiding principles:

- 1) **Ambition** – to unlock significant additional long-term funding and powers to support sustainable and inclusive economic growth and giving the area greater freedom to decide how best to meet local needs and create new opportunities for people and business.
- 2) **A focus on strategic economic opportunities at the MCA level**, ensuring that it creates a cost-effective tier of local government for strategic planning and delivery across our area. Operating strategically, the Hull and East Yorkshire Mayoral Combined Authority will create efficiencies through the pooling of resources where it is practical to do so. The existing Hull and East Riding Unitary Authorities will remain and collectively with the Mayor will form the Combined Authority. Neither authority's functions will be removed, and where functions or resources are to be shared with the Mayor and the Combined Authority, it will be agreed with each of the constituent authorities. The Hull and East Riding Unitary Authorities will continue to work collaboratively with other local authorities to deliver their objectives, particularly across the Humber and along the East Coast.
- 3) **Streamlined and robust governance arrangements**, bringing together existing activities to create greater coherence, comprising the following key elements:

- **A directly elected Mayor for Hull and East Yorkshire** with a clear economic leadership remit, including skills, business support and inward investment, strategic planning, strategic transport, tourism (destination management) and other shared services that support economic development.
- **A Mayoral Combined Authority** based on consensus and having a shared vision and focus on economic, social and environmental challenges and opportunities.
- **A commitment to continued pan-Humber collaboration** to support growth where joint working makes most sense under the auspices of the established Joint Committee, the Humber Leadership Board - see 8.4 below)
- Transitional **arrangements that optimise the use of existing funding** based on the previous LEP geography and secure the ongoing delivery of Growth Hub services.
- **A newly formed Hull and East Riding LEP** to provide the business voice for the area.

8.2 Governance arrangements under a new Mayoral Combined Authority model

Further developing and delivering the Mayoral Combined Authority's vision will require collaboration across all the key partners: the councils, private, public, voluntary and social enterprise sectors. Hull and East Riding Councils are committed to finding the most appropriate means of involving all stakeholders and progress with proposals to begin the delivery of the vision for the establishment of the Mayoral Combined Authority in March 2022.

Ahead of this date, the local authorities will form a shadow Combined Authority in the form of a sub-committee of the established Joint Committee, providing democratic accountability for the Hull and East Yorkshire LEP. Joint working arrangements at officer level will be established through the creation of a small joint unit, drawing on external expertise where necessary.

The Hull and East Yorkshire LEP will provide the business voice for the area and will work with the Mayoral Combined Authority. The Mayoral Combined Authority and the LEP will have a joint assurance framework, in accordance with the LEP Review and National Assurance Framework, demonstrating their joint commitment to the continued high standards of governance and transparency, building on the excellent track record that the area already has.

8.3 The Mayor

The directly elected Mayor of Hull and East Yorkshire Combined Authority will work in close partnership with the Hull and East Riding constituent councils. The first election of the directly elected Mayor will be May 2022.

The Mayor of the Combined Authority will be the Chair and a Member of the Combined Authority, with the other Members serving as the Mayor's Cabinet. The Mayor will also be required to consult the Combined Authority's Cabinet on their strategies, who will also be able to examine the Mayor's spending plans.

The Mayor will chair a Cabinet of six Members made up of the Leaders of both councils and the respective leads or portfolio holders for economic development/regeneration and skills.

The requirement for sub-Boards, which incorporate other co-opted/non-voting members will be considered as the governance arrangements are refined. In accordance with legislation, the Mayor and the Cabinet will be scrutinised and held to account by a combined Scrutiny Committee and an Audit Committee.

8.4 Joint Working with Humber Partners

The Humber Estuary is an important shared economic and natural asset for Hull & East Riding, the Northern Powerhouse and the wider UK. Over recent years, the Humber Energy Estuary has been integral to the expansion of the offshore wind sector and is now leading the way on plans for industrial decarbonisation. Meanwhile, the ongoing development of the Humber 2100+ strategy is essential for protecting communities and industries around the estuary from rising sea levels and the second highest flood risk after the Thames.

Recognising this, local authority and business leaders are working together to ensure that the progress the Humber has made over the last decade continues and can be strengthened on the following four agreed areas, as Hull and East Riding and Greater Lincolnshire move towards new devolved arrangements:

- **Energy and industrial decarbonisation** – including positioning the Humber to benefit from the further expansion of offshore wind and attract new investment in industrial decarbonisation, such as carbon capture and storage and hydrogen production with the aim of reaching net zero carbon emissions by 2040.
- **Ports and related sectors** – including bidding for a multi-site Humber Freeport to expand value-added manufacturing activity in the region (subject to clarity on the final policy). **As part of this, we want to work with Government to ensure that the governance and operational models available can support the scale of opportunity around the Humber, as well as the complexities of different land ownerships and administrative geographies.**
- **Management of the Humber Estuary asset** – including the Humber 2100+ flood strategy and continuing the Single Conversation approach on major estuary-related investments. **As part of this, we would like to work with Defra agencies to produce a joint Natural Capital Plan for the Humber Estuary (previously agreed as part of the Humber Local Industrial Strategy) which takes full account of the requirements for Net Gain arising from development along the estuary in the Environment Bill.**
- **External investment marketing** – co-ordinating external marketing of the joint Humber proposition for investment in energy/clean growth sectors and on the Humber Freeport. **We would welcome developing stronger collaborative arrangements with the Department for International Trade to support this (previously agreed as part of the Humber Local Industrial Strategy).**

As requested by the Minister for Regional Growth and Local Government, we will set out separately (by 30 September) with Northern Lincolnshire local authority leaders and the chairs of the Humber and Greater Lincolnshire LEPs how we will structure future collaboration, including:

- A strengthened **Humber Leadership Board** (statutory joint committee) to provide ongoing democratically accountable governance of cross-Humber initiatives. The Hull and East Yorkshire and Greater Lincolnshire LEP Chairs will be invited to join Humber local authority leaders on this committee.
- Publication of a **Humber Estuary Plan**, building on the work done to agree the draft Humber Local Industrial Strategy with Government.
- Setting out timescales for developing additional longer-term arrangements to support the delivery of key priorities.

A Devolution Deal for Hull and East Riding – Summary of Proposals

- **£750m (£25m p.a. over 30 years)** Gainshare / Investment Fund settlement
- **£100m (£20m p.a. over 5 years)** Devolved, multi-year Shared Prosperity Fund (SPF) settlement
- **£110m (£22m p.a. over 5 years)** Devolved, multi-year settlement from Government's future Capital Growth Programme (successor to Local Growth Fund/ Getting Building Fund programmes)
- **£2m (£1m p.a. over 2 years)** Capacity funding to scale up strategic planning and delivery at Hull and East Yorkshire level
- **£2.5m (£0.5m p.a. over 5 years)** Capacity funding for the new Hull and East Yorkshire Local Enterprise Partnership

Connectivity	Productivity	Inclusivity	Sustainability
Financial Proposals			
<ul style="list-style-type: none"> • The Mayor will be responsible for a devolved and consolidated local transport budget for the area of the Hull and East Yorkshire Combined Authority, including all relevant devolved highways maintenance funding, through an initial 5-year settlement • A new £60m Highways Maintenance Backlog Fund over 5 years to address the impact of the current shortfall in investment in Hull and East Yorkshire's local highways and keep our economy moving through the recovery from COVID-19 • A new £200m Integrated Transport Settlement over 5 years (FY22-26) to invest in an integrated, low carbon transport programme which addresses the breadth of our local transport priorities. In addition, we are seeking early revenue funding to support the development and prioritisation of the investment programme • A new £60m Active Travel and Bus Fund to spearhead a successful green recovery 	<ul style="list-style-type: none"> • Devolution of the Adult Education Budget, supporting our fundamental aim to empower people to fulfil their full potential through access to education and job opportunities • Greater control of apprenticeship levy underspends • Control of career services budgets and coordination with the Careers and Enterprise Company 	<ul style="list-style-type: none"> • Joint working with DWP to establish a £15m per annum Young People's Work Guarantee Programme for Hull • A new £25m Brownfield Land Fund to unlock development and deliver the quantity and quality of homes and employment spaces we need in strategic growth locations • A new £100m Community Renewal Fund to invest in improving the quality of housing stock and the built environment for Hull and East Yorkshire's most deprived areas and helping to level up our disadvantaged communities • A new £10m Fund for a targeted One Public Estate programme which unlocks development opportunities on surplus land to support strategic regeneration plans • Confirmation of the full £25m allocation for the Goole Towns Deal within MHCLG's existing Towns Fund process • Working with Government to confirm a Future High Streets Fund allocation for Hull and identifying further funding opportunities to support COVID-19 recovery in the city • A new £50m Coastal Towns Programme for Bridlington, Hornsea and Withernsea • £50m for the development and delivery of a new Culture and Heritage Fund, working in partnership with Historic England and Arts Council England 	<ul style="list-style-type: none"> • A new £10m Net Zero Carbon Innovation Fund over 5 years to support the development of innovative low carbon initiatives across key sectors of the Hull and East Yorkshire area
Wider Proposals			
<ul style="list-style-type: none"> • Strategic Transport Plan Powers for the Mayor • Enhanced joint-working with Highways England to establish and progress shared investment priorities • EV Infrastructure Powers • Relevant powers in the Bus Services Act 2017, including the power to introduce bus franchising • Enhanced joint working with Network Rail and the DfT to progress strategic rail and light rail investments and improve urban access, including full electrification of North Transpennine rail corridor, reconstruction of Hull Beverley York (Minsters) line, and pilot projects for new low carbon technologies. • Working with DfT to secure a replacement for the Marco Polo EU programme/former Freight Facilities Grant, and with DEFRA/DfT to further develop our Waterways Partnership approach • Working with DCMS and BDUK to ensure all households, business and public services across Hull and East Yorkshire can access superfast broadband and mobile connectivity, and expand on our Smart City credentials to become a 'Smart Place' 	<ul style="list-style-type: none"> • Working with DfE and BEIS to review post-16 provision and funding to improve choice and levels of attainment throughout the area • Working with the Government on the roll-out of the National Skills Fund in our area • Enhanced joint working with UKRI, BEIS and wider HMG departments to spearhead innovation and business growth in our key sectors • Working with DCMS and Visit England as part of the Government's Tourism Sector Deal to fast track the establishment of a Tourism Action Zone based on 'city, coast and country' • Working with the DIT to establish an International Trade Forum, which will agree a joint plan and seek to join up activity around key sectors and market priorities • Working with Government to fast track the establishment of a bespoke multi-site Freeport model for the Humber Estuary • Engagement with the DfT, Marine Management Organisation, Environment Agency and Natural England to consider our proposals for a new, nationally significant Yorkshire Cruise Terminal • Mayoral powers over Land Assembly, Compulsory Purchase and Mayoral Development Corporations to support growth in key strategic locations, including in respect of ports development 	<ul style="list-style-type: none"> • Co-design of relevant DWP programmes in order to ensure national policy supports the aims of our long-term inclusive economy programme • Working with Government to support Hull and East Yorkshire's ambition for public service reform, and shape the application of national Social Value policy to local programmes • Working with Homes England to increase the rate of rural affordable housing delivery • Increased flexibility over use of Right to Buy receipts to enable the delivery of up to 200 affordable homes a year • Establish a long-term partnership approach with Historic England, Arts Council England and National Lottery Heritage Fund for the area's major archaeological and built heritage assets • Joint working with DCMS and the Office for Civil Society to influence how the Voluntary and Community Sector is funded and sustained to support local service delivery in our area 	<ul style="list-style-type: none"> • Strategic Planning Powers for the Mayor (incl. the power to create a Spatial Development Plan for the area) • Working with DEFRA, the EA and other Agencies to enable all sources of flood risk to be considered holistically to speed up the design and progress of flood mitigation measures. • Working with DEFRA and its Agencies to establish adequate funding to enact successful ongoing Shoreline Management Planning and deliver coastal change adaptation • Working with Government to identify approaches for maximising partnership investment and planning in flood mitigation and management, to increase the flood-resilience of our area • Working with DEFRA to take forward place-based elements of the Environment and Agriculture Bills, such as Local Nature Recovery Strategies, Biodiversity Net Gain and Environmental Land Management and enhancing the role of Local Nature Partnerships

FREQUENTLY ASKED QUESTIONS

What is devolution?

Devolution is the granting of some powers and funding from Central Government to local areas so that more decision-making and resources can be managed locally.

Government continues to retain responsibility for national issues but devolution allows local areas to make their own decisions on important matters such as transport, employment skills and support for businesses.

Devolution therefore gives local people more ability to determine their own area's future.

What is Government policy on devolution?

In the Queen's speech, the Government promised a White Paper on devolution in autumn 2020 that would provide further information on the Government's plans for full devolution across England, levelling up powers between mayoral combined authorities, increasing the number of mayors and agreeing more devolution deals.

The forthcoming Devolution and Local Recovery White Paper is expected in October 2020 and the Government has made it clear that in two tier areas (which have county and district councils) the creation of unitary councils will be "a vital first step for negotiating these mayoral devolution deals in the future".

What is a devolution deal?

A devolution deal is the process of securing devolution for an area, with a group of councils agreeing with Government about how they can take greater control over funding and decision-making for their area.

Is there a devolution deal for Hull and the East Riding?

East Riding of Yorkshire Council and Hull City Council have submitted a proposal to the Government for a devolution deal for their combined area. The Government will consider the proposal and there will also be a period of public consultation before any of the necessary legal (and legislative?) measures are taken to put the deal into practice.

At this stage, the proposal is a statement of intent and there are no binding commitments on the Government or either council.

What will devolution mean for people who live and work here?

If a devolution deal is agreed for Hull and the East Riding, it will guarantee substantial, long-term funding which will allow us to invest in public transport, support business, improve skills and living standards and also help us tackle climate change.

It will mean more of the decisions with major impacts on our area which are currently taken by the Government in London will be taken here.

It will also mean a higher profile for the area and enable Hull and the East Riding to be further up the queue for any future extra funding and powers.

How will it work?

East Riding of Yorkshire Council and Hull City Council already work closely together in many ways to deliver quality services for residents and businesses and a devolution deal would be another step forward in that existing partnership working.

The main change would see the creation of what is called a combined authority. That does not mean the councils would merge. They would remain separate and continue to operate the vast majority of their existing services separately but some decisions on big, strategic matters affecting the whole area would be taken by the combined authority element of the councils.

The combined authority would see the creation of a mayor, directly elected by residents, and they would have strategic, decision-making responsibilities along with other elected members of the combined authority.

What area would the combined authority cover?

The proposal covers the administrative areas of East Riding of Yorkshire Council and Hull City Council and there is no intention to change any boundaries.

Why aren't you progressing a devolution deal for the whole of Yorkshire or the Humber area?

Other councils in Yorkshire have chosen to progress devolution deals for their areas rather than a One Yorkshire deal and the North Lincolnshire and North East Lincolnshire Councils are progressing a devolution agreement with other Lincolnshire councils.

Hull and the East Riding enjoy strong ties and working relationships and a devolution for our combined area will have many benefits.

We will continue to work closely with our other neighbours in Yorkshire and on the South Bank of the Humber, to make the most of opportunities such as attracting inward investment.

Why do we need a mayor?

The Government has said that any devolution deals must include the establishment of an elected mayor. Mayors work within combined authorities to exercise powers at a regional or sub-regional level and give the area they represent a high profile.

The fact that mayors of combined authorities are directly elected by the public of the area they serve ensures they are accountable for the additional powers and funding which are made available through devolution deals.

What powers will the mayor have?

The mayor would chair the Hull and East Riding Combined Authority, if that is the agreed way forward. Their specific powers would be agreed by the two councils and the Government and will be part of the consultation process which will also involve the public.

How would the mayor be held to account?

The mayor would be responsible to voters, with elections held every four years. The mayor would also be part of the combined authority with the leaders of Hull City Council and East Riding of Yorkshire Council and they and other elected members would all have a say in decisions taken at such a sub-regional level.

There would also be what is called an “overview and scrutiny” process similar to that in place in local councils, which gives elected politicians of any affiliation the opportunity to challenge, question, scrutinise and review decision-making and the delivery of services to residents and businesses.

Who would choose the mayor?

The mayor would be elected by people in Hull and the East Riding who are eligible to vote at the time of the mayoral elections.

When would the mayor be elected?

It would depend on the timescale of the devolution deal, if it is taken forward, but is not likely to take place until at least 2022. Mayors would serve four-year terms.

What would happen to the roles of Lord Mayor of Hull and Chairman of the East Riding?

Those roles are civic and would not be affected by the establishment of a mayor of a Hull and East Riding Combined Authority.

Will it cost more money to have a mayor and a combined authority?

It is expected that any devolution deal would include funding to meet the additional costs of the new arrangements.

How would we ensure value for money?

There would be assurance processes in place to ensure value for money regarding any spending. The combined authority would be transparent and accountable to local people. It would also be subject to assessments by the Government to ensure it is achieving economic growth and other results.

Would it mean more politicians?

The only additional political representative would be a mayor.

Isn't this just more bureaucracy?

Devolution is also about reducing bureaucracy. By being able to have local people making more big decisions closer to where those decisions will have an impact – people who know and understand Hull and the East Riding - it can reduce the lengthy processes involved in dealing with Government and help to achieve better value for money and better results.

What would this mean for the two existing councils?

East Riding of Yorkshire Council and Hull City Council will continue to have the responsibilities they do now, providing vital services to communities and championing the city, towns and rural communities. This is about moving powers and money from Whitehall to East Yorkshire for the benefit of all our communities.

How would devolution make a difference to local communities?

Local communities would see investments in areas such as better transport, skills, housing and regeneration.

What is the alternative to agreeing a devolution deal?

A devolution deal would be expected to offer Hull and the East Riding significant and secure long-term funding to invest in better public transport, improving skills, supporting business, creating jobs, protection from flooding and tackling climate change. It would also provide much greater freedom to take important decisions which impact on our communities.

The alternative to agreeing a devolution deal is huge uncertainty over future investment as current funding from Government comes to an end.

Hello,

I hope you all had a good Christmas, even with the Covid restrictions. I know I sent you a December Bulletin but this is a short bulletin hopefully containing information you will find interesting.

In this Bulletin, we have:

- ⇒ An invitation for anyone to **Meet the Commissioner** in a series of online meetings in the New Year using Zoom
- ⇒ Confirmation of the PCC previously postponed election date
- ⇒ The arrival of the **new East Riding Rural Task Force** based at Driffield.
- ⇒ Preliminary results of the Humberside **Rural Policing Priorities survey**
- ⇒ The offer of **online fraud prevention session** for your area through ERVAS (East Riding Voluntary Action Service) who have been commissioned by the East Riding Community Safety Partnership to deliver them to East Riding communities
- ⇒ An introduction to the forthcoming Census 2021 Campaign

Invitation to Meet the Commissioner, Keith Hunter

Humberside Police & Crime
Commissioner Keith Hunter

Over recent years, many of you have taken the opportunity to attend one of the many Meet the Commissioner events we have hosted across the East Riding. Regrettably, we have been unable to run these events this year so we have moved them online using Zoom. It's quite different doing it this way because we don't have to worry about every one driving at night and turning out in bad weather.



You can hear about the Commissioner's work, ask questions and talk to the PCC from the comfort of your own home. The January meeting went very well with attendees from across the East Riding. The Commissioner said "I really enjoyed the opportunity to listen to East Riding resident's views and to hear about what is important to them. I also enjoyed being challenged with some really good questions." Please join us. The remaining 2021 dates are:

6.30pm—8.30pm Thursday 25th February (Register by 5pm Wed 24th Feb)

6.30pm—8.30pm Thursday 11th March (Register by 5pm Wed 10th Mar)

How to register to MEET THE COMMISSIONER

To register for any of the above sessions please email me on

Deborah.fagan@humberside.pnn.police.uk. The deadline for each session is shown above and once registered, you will be provided with the Zoom access codes on the day before the event. You can also submit questions for the Commissioner ahead of the sessions and we will make sure they are answered on the night. These events are open to the general public so please pass this invitation on to anyone who may be interested in taking part. We look forward to seeing you there.

Police & Crime Commissioner Elections

You may recall that the 2020 PCC Elections were postponed due to the pandemic. The Office of the Police and Crime Commissioner for Humberside have now received formal confirmation from the Government that the forthcoming elections for Police & Crime Commissioners (PCCs) will take place on 6th May 2021. Local Council elections will also take place in some areas and in neighbouring West Yorkshire they are electing a metro Mayor who will replace the PCC. The Returning Officer for the Humberside PCC is the East Riding Council's Chief Executive Caroline Lacey.

MEET THE TEAM—East Riding Rural Task Force

Humberside Police have introduced a new Rural Task Force of a Sergeant and four PCs who are now based at Driffeld Police Station. They will concentrate on crime in rural areas such as theft of plant and travelling criminals across the East Riding strengthening their response to rural and organised crime.



PC Erica Williamson

PC Rich Fussey

Sgt Jenna Jones

PC Kevin Jones

(4th PC yet to be confirmed)

RURAL POLICING PRIORITIES

Both the PCC and the Chief Constable, Lee Freeman are keen for the views of communities to influence local policing priorities. With the growth of policing and the introduction of the new Rural Crime Task Force to the East Riding there has been no better time to seek those views. In my December Bulletin I invited everyone to take part in a Humberside wide survey to establish the top three Rural Policing Priorities. I provided a link to a short online survey which closed on 28th January.

Amazingly, nearly 600 rural residents and workers from across Humberside completed the survey. We already know from the results of the survey that the top three rural policing priorities for the whole of Humberside, in order, are:

- 1) Burglary (dwellings and outbuildings)
- 2) Criminal Damage
- 3) Theft of and from machinery or equipment

We asked participants to provide the first four digits of their postcode which will enable a more local analysis. That work has started but will take time. Thank you to all those who took the time to complete the survey. It really helps Humberside to understand and focus on the things that are important to communities

FRAUD AWARENESS

East Riding Voluntary Action Services (ERVAS) and the Humberside Police Cyber Crime team and the Economic Crime Unit, have launched their Winter Fraud Campaign, they are hosting a series of workshops focused on:

- Fraud and Cyber Awareness
- Understanding Your Digital Footprint, Social Engineering and Staying Safe Online
- Keeping Young People Safe Online

These workshops will have a focus on the next few upcoming seasonal events, such as the January sales, Valentine's Day and Easter.

To find out more about this campaign, and book onto some of the other workshops, you can access the full schedule [here](#).

If you operate a business or community based organisation, and would like to support this campaign, you can make a pledge on the fraudwatch.org.uk website.

If you would like to arrange your own local session, please contact Devan Witter at ERVAS via email on devan@ervas.org.uk.

If you think you've been a victim of fraud, report it to Action Fraud online at www.actionfraud.police.uk or by calling 0300 123 2040. The FraudWatch website also details how you can gain support locally, visit fraudwatch.org.uk/support-for-victims/.

The campaign has been funded by the East Riding Crime Reduction Fund administered by Two Ridings Community Foundation. Funds are provided by the Office of the Humberside Police and Crime Commissioner.

Everyone will benefit from Census 2021—Census Day—Sunday 21st March 2021

All households across the East Riding of Yorkshire will be required to take part in Census 2021 next month.

The census, run by the Office for National Statistics, is a once-in-a-decade survey that gives us the most accurate estimate of all the people and households in England and Wales. It has been carried out every ten years since 1801, with the exception of 1941.

Understanding the needs of the nation helps everyone from central government to organisations, such as councils and health authorities, plan and fund public services across England and Wales. Census outputs inform where billions of pounds of public funding is spent on services like transport, education and health – on cycle routes, schools and dental surgeries. Information from the census is also important in helping lots of other people and organisations do their work.

Charities and voluntary organisations often use it as evidence to get funding. It helps businesses to understand their customers and, for example, decide where to open new shops, housing and schools. It provides important information on population diversity, allowing organisations to understand their communities and receive sufficient Government funding.

Census 2021 will be the first run mainly online, with households receiving a letter with a unique access code, allowing them to complete the questionnaire on their computers, phones or tablets.

“No-one should miss out. Everyone can complete on online with a new search-as-you-type ability and paper forms for those who need them.”

Census day will be on March 21, but households will soon receive letters with online codes explaining how they can take part. The census will include questions about your sex, age, work, health, education, household size and ethnicity. For the first time, there will also be a question asking people whether they have served in the armed forces, as well as voluntary questions for those aged 16 and over on sexual orientation and gender identity.

Local census support centres will be open while the census is happening. Staff will offer help for people not confident online, who don't have a computer or need help completing on paper. or call the contact centre on 0800 141 2021.

Results will be available within 12 months, although personal records will be locked away for 100 years, kept safe for future generations.

For more information and advice on how to answer the questions, visit census.gov.uk.

And finally,

Humberside Police continue to seek volunteers to become members of their Community Advisory Groups. The key function of a Community Action Group (CAG) is to form an open forum through which they review, challenge and advise on proposed or existing Humberside Police policies, systems and processes. The main aim of the CAGs is to prevent disadvantage from occurring to any one community through the development and implementation of policy and procedures. It is important to note that the role of a CAG is to bring communities and police together to improve the Police Service and not to scrutinise it as there are other mechanisms for doing that. Whilst the other three local authority areas in Humberside have a single Group, the geography of the East Riding has five. These are Bridlington/Hornsea, Goole, Beverley, Hedon and Haltemprice. The Groups are co-ordinated by Community Cohesion Officer PC 988 Carl Osler. If you are interested in learning more about the CAGs or becoming a member



Debbie Fagan

Engagement Officer (East Riding)

Office of the Police & Crime Commissioner for Humberside

Email: Deborah.fagan@humberside.pnn.police.uk

Please email me on the address above if you no longer wish to receive future OPCC E Bulletins.



Application for Planning Permission.
Town and Country Planning Act 1990

Publication of applications on planning authority websites.

Please note that the information provided on this application form and in supporting documents may be published on the Authority's website. If you require any further clarification, please contact the Authority's planning department.

1. Site Address

Number	
Suffix	
Property name	Metham Hall Farm
Address line 1	Metham Lane
Address line 2	Metham
Address line 3	
Town/city	Goole
Postcode	DN14 7YB

Description of site location must be completed if postcode is not known:

Easting (x)	480942
Northing (y)	424760

Description

--

2. Applicant Details

Title	Mr
First name	John
Surname	Williamson
Company name	B.Williamson & Son
Address line 1	Waterside House
Address line 2	Metham
Address line 3	
Town/city	Goole
Country	United Kingdom

2. Applicant Details

Postcode

DN14 7YB

Are you an agent acting on behalf of the applicant?

☒ Yes ☐ No

Primary number

Secondary number

Fax number

Email address

3. Agent Details

Title

Mr

First name

Robert

Surname

Falkingham

Company name

Address line 1

Castle Farm

Address line 2

Wressle

Address line 3

Town/city

Selby

Country

United Kingdom

Postcode

YO8 6ET

Primary number

Secondary number

Fax number

Email

4. Site Area

What is the measurement of the site area?
(numeric characters only).

2.57

Unit

hectares

5. Description of the Proposal

Please describe details of the proposed development or works including any change of use.

If you are applying for Technical Details Consent on a site that has been granted Permission In Principle, please include the relevant details in the description below.

Erection of new grain store, adjacent to existing grain drying facilities.

Has the work or change of use already started?

☐ Yes ☒ No

6. Existing Use

Please describe the current use of the site

Grass Paddock / Hard standing

Is the site currently vacant? ☒ Yes ☐ No

If Yes, please describe the last use of the site

Grass Paddock

When did this use end (if known)? DD/MM/YYYY

Does the proposal involve any of the following? If Yes, you will need to submit an appropriate contamination assessment with your application.

Land which is known to be contaminated ☐ Yes ☒ No

Land where contamination is suspected for all or part of the site ☐ Yes ☒ No

A proposed use that would be particularly vulnerable to the presence of contamination ☐ Yes ☒ No

7. Materials

Does the proposed development require any materials to be used externally? ☐ Yes ☒ No

Please provide a description of existing and proposed materials and finishes to be used externally (including type, colour and name for each material):

Walls	
Description of existing materials and finishes (optional):	
Description of proposed materials and finishes:	Concrete panels to 3.6m height Plastic coated metal sheets above to eaves - colour dark green to match existing shed

Roof	
Description of existing materials and finishes (optional):	
Description of proposed materials and finishes:	cement fibre sheets

Are you supplying additional information on submitted plans, drawings or a design and access statement? ☐ Yes ☒ No

If Yes, please state references for the plans, drawings and/or design and access statement

MR WILLIAMSON - Planning Drawings

8. Pedestrian and Vehicle Access, Roads and Rights of Way

Is a new or altered vehicular access proposed to or from the public highway? ☐ Yes ☒ No

Is a new or altered pedestrian access proposed to or from the public highway? ☐ Yes ☒ No

Are there any new public roads to be provided within the site? ☐ Yes ☒ No

Are there any new public rights of way to be provided within or adjacent to the site? ☐ Yes ☒ No

Do the proposals require any diversions/extinguishments and/or creation of rights of way? ☐ Yes ☒ No

9. Vehicle Parking

Does the site have any existing vehicle/cycle parking spaces or will the proposed development add/remove any parking spaces? ☐ Yes ☒ No

10. Trees and Hedges

Are there trees or hedges on the proposed development site? ☐ Yes ☒ No

And/or: Are there trees or hedges on land adjacent to the proposed development site that could influence the development or might be important as part of the local landscape character? ☐ Yes ☒ No

If Yes to either or both of the above, you may need to provide a full tree survey, at the discretion of your local planning authority. If a tree survey is required, this and the accompanying plan should be submitted alongside your application. Your local planning authority should make clear on its website what the survey should contain, in accordance with the current 'BS5837: Trees in relation to design, demolition and construction - Recommendations'.

11. Assessment of Flood Risk

Is the site within an area at risk of flooding? (Check the location on the Government's Flood map for planning. You should also refer to national standing advice and your local planning authority requirements for information as necessary.) ☒ Yes ☐ No

If Yes, you will need to submit a Flood Risk Assessment to consider the risk to the proposed site.

Is your proposal within 20 metres of a watercourse (e.g. river, stream or beck)? ☒ Yes ☐ No

Will the proposal increase the flood risk elsewhere? ☐ Yes ☒ No

How will surface water be disposed of?

☐ Sustainable drainage system

☒ Existing water course

☐ Soakaway

☐ Main sewer

☐ Pond/lake

12. Biodiversity and Geological Conservation

Is there a reasonable likelihood of the following being affected adversely or conserved and enhanced within the application site, or on land adjacent to or near the application site?

To assist in answering this question correctly, please refer to the help text which provides guidance on determining if any important biodiversity or geological conservation features may be present or nearby; and whether they are likely to be affected by the proposals.

a) Protected and priority species:

- ☐ Yes, on the development site
☐ Yes, on land adjacent to or near the proposed development
☒ No

b) Designated sites, important habitats or other biodiversity features:

- ☐ Yes, on the development site
☐ Yes, on land adjacent to or near the proposed development
☒ No

c) Features of geological conservation importance:

- ☐ Yes, on the development site
☐ Yes, on land adjacent to or near the proposed development
☒ No

13. Foul Sewage

Please state how foul sewage is to be disposed of:

- ☐ Mains Sewer
- ☐ Septic Tank
- ☐ Package Treatment plant
- ☐ Cess Pit
- ☒ Other
- ☐ Unknown

Other

Are you proposing to connect to the existing drainage system? ☐ Yes ☒ No ☐ Unknown

14. Waste Storage and Collection

Do the plans incorporate areas to store and aid the collection of waste? ☐ Yes ☒ No

Have arrangements been made for the separate storage and collection of recyclable waste? ☐ Yes ☒ No

15. Trade Effluent

Does the proposal involve the need to dispose of trade effluents or trade waste? ☐ Yes ☒ No

16. Residential/Dwelling Units

Please note: This question has been updated to include the latest information requirements specified by government. Applications created before 23 May 2020 will not have been updated, please read the 'Help' to see details of how to workaround this issue.

Does your proposal include the gain, loss or change of use of residential units? ☐ Yes ☒ No

17. All Types of Development: Non-Residential Floorspace

Does your proposal involve the loss, gain or change of use of non-residential floorspace? ☒ Yes ☐ No
Note that 'non-residential' in this context covers all uses except Use Class C3 Dwellinghouses.

Please add details of the Use Classes and floorspace.

Following changes to Use Classes on 1 September 2020: The list includes the now revoked Use Classes A1-5, B1, and D1-2 that should not be used in most cases. Also, the list does not include the newly introduced Use Classes E and F1-2. To provide details in relation to these or any 'Sui Generis' use, select 'Other' and specify the use where prompted. Multiple 'Other' options can be added to cover each individual use. View further information on Use Classes.

Use Class	Existing gross internal floorspace (square metres)	Gross internal floorspace to be lost by change of use or demolition (square metres)	Total gross new internal floorspace proposed (including changes of use) (square metres)	Net additional gross internal floorspace following development (square metres)
B8 - Storage or distribution	0	0	520	520
Total	0	0	520	520

Loss or gain of rooms

For hotels, residential institutions and hostels please additionally indicate the loss or gain of rooms:

18. Employment

Are there any existing employees on the site or will the proposed development increase or decrease the number of employees? ☐ Yes ☒ No

19. Hours of Opening

Are Hours of Opening relevant to this proposal?

☐ Yes ☒ No

20. Industrial or Commercial Processes and Machinery

Does this proposal involve the carrying out of industrial or commercial activities and processes?

☐ Yes ☒ No

Is the proposal for a waste management development?

☐ Yes ☒ No

If this is a landfill application you will need to provide further information before your application can be determined. Your waste planning authority should make it clear what information it requires on its website

21. Hazardous Substances

Does the proposal involve the use or storage of any hazardous substances?

☐ Yes ☒ No

22. Site Visit

Can the site be seen from a public road, public footpath, bridleway or other public land?

☒ Yes ☐ No

If the planning authority needs to make an appointment to carry out a site visit, whom should they contact?

- ☐ The agent
☒ The applicant
☐ Other person

23. Pre-application Advice

Has assistance or prior advice been sought from the local authority about this application?

☐ Yes ☒ No

24. Authority Employee/Member

With respect to the Authority, is the applicant and/or agent one of the following:

- (a) a member of staff**
(b) an elected member
(c) related to a member of staff
(d) related to an elected member

It is an important principle of decision-making that the process is open and transparent.

☐ Yes ☒ No

For the purposes of this question, "related to" means related, by birth or otherwise, closely enough that a fair-minded and informed observer, having considered the facts, would conclude that there was bias on the part of the decision-maker in the Local Planning Authority.

Do any of the above statements apply?

25. Ownership Certificates and Agricultural Land Declaration

CERTIFICATE OF OWNERSHIP - CERTIFICATE B - Town and Country Planning (Development Management Procedure) (England) Order 2015 Certificate under Article 14

I certify/The applicant certifies that:

- ☒ I have/The applicant has given the requisite notice to everyone else (as listed below) who, on the day 21 days before the date of this application, was the owner* and/or agricultural tenant** of any part of the land or building to which this application relates; or
☐ The applicant is the sole owner of all the land or buildings to which this application relates and there are no other owners* and/or agricultural tenants**.

*** 'owner' is a person with a freehold interest or leasehold interest with at least 7 years to run. ** 'agricultural tenant' has the meaning given in section 65(8) of the Town and Country Planning Act 1990.**

Owner/Agricultural Tenant

25. Ownership Certificates and Agricultural Land Declaration

Name of Owner/Agricultural Tenant	
Number	
Suffix	
House Name	Scoreby Manor
Address line 1	Gate Helmsley
Address line 2	
Town/city	York
Postcode	YO41 1NR
Date notice served (DD/MM/YYYY)	26/12/2020

Person role

- ☒ The applicant
☐ The agent

Title	Mr
First name	John
Surname	Williamson
Declaration date (DD/MM/YYYY)	13/01/2021

☒ Declaration made

26. Declaration

I/we hereby apply for planning permission/consent as described in this form and the accompanying plans/drawings and additional information. I/we confirm that, to the best of my/our knowledge, any facts stated are true and accurate and any opinions given are the genuine opinions of the person(s) giving them. ☒

Date (cannot be pre-application)	13/01/2021
----------------------------------	------------

Mr R.Falkingham

Castle Farm

Wressle

Selby

YO8 6ET

robalky@hotmail.com

Proposal: New Grain Store

Applicant: Mr J.B.Williamson

B.Williamson & Son, Waterside House, Metham, Goole.

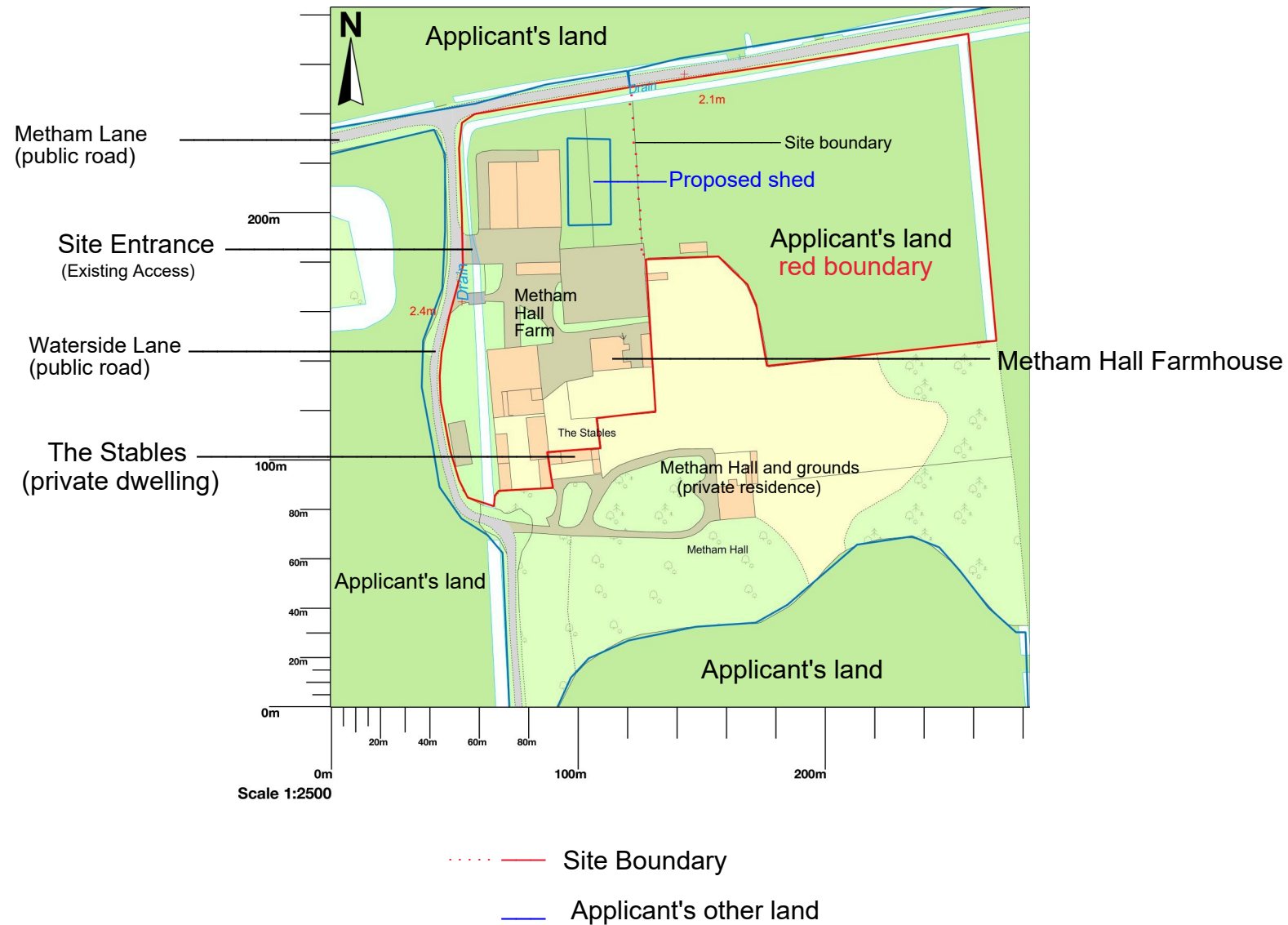
Site Location: Metham Hall Farm, Metham Lane, Metham, Goole
DN14 7YB

Background: Mr Williamson is now farming additional land at nearby Staddlethorpe, since his cousin's retirement. (approx. 75 Ha = 750t grain) For the past couple of years a shed has been available on the Staddlethorpe farm, however this has now been sold along with house and brick buildings and is no longer available. Mr. Williamson has also had to sell a proportion of his crop at harvest which is usually at a low price as his current storage capacity is not enough. Mr. Williamson therefore needs additional storage on his farm.

Location: Mr Williamson's existing grain drying facilities are at Metham Hall Farm, and the proposed location will minimise grain movements, and maximise efficiency on site. The proposed site is also on the highest land on the farm and will have the least visual impact.

Design & Access statement: Plan to use the existing farm access off Waterside Lane (See Plan). No additional traffic is anticipated as grain is already brought onto the site for drying. Currently some has to be sold at harvest. As access is **not** directly off Metham Lane, but Waterside Lane which is a cul-de-sac with very little traffic, Local traffic from the villages of Yokefleet and Laxton should not be affected by tractors turning in.

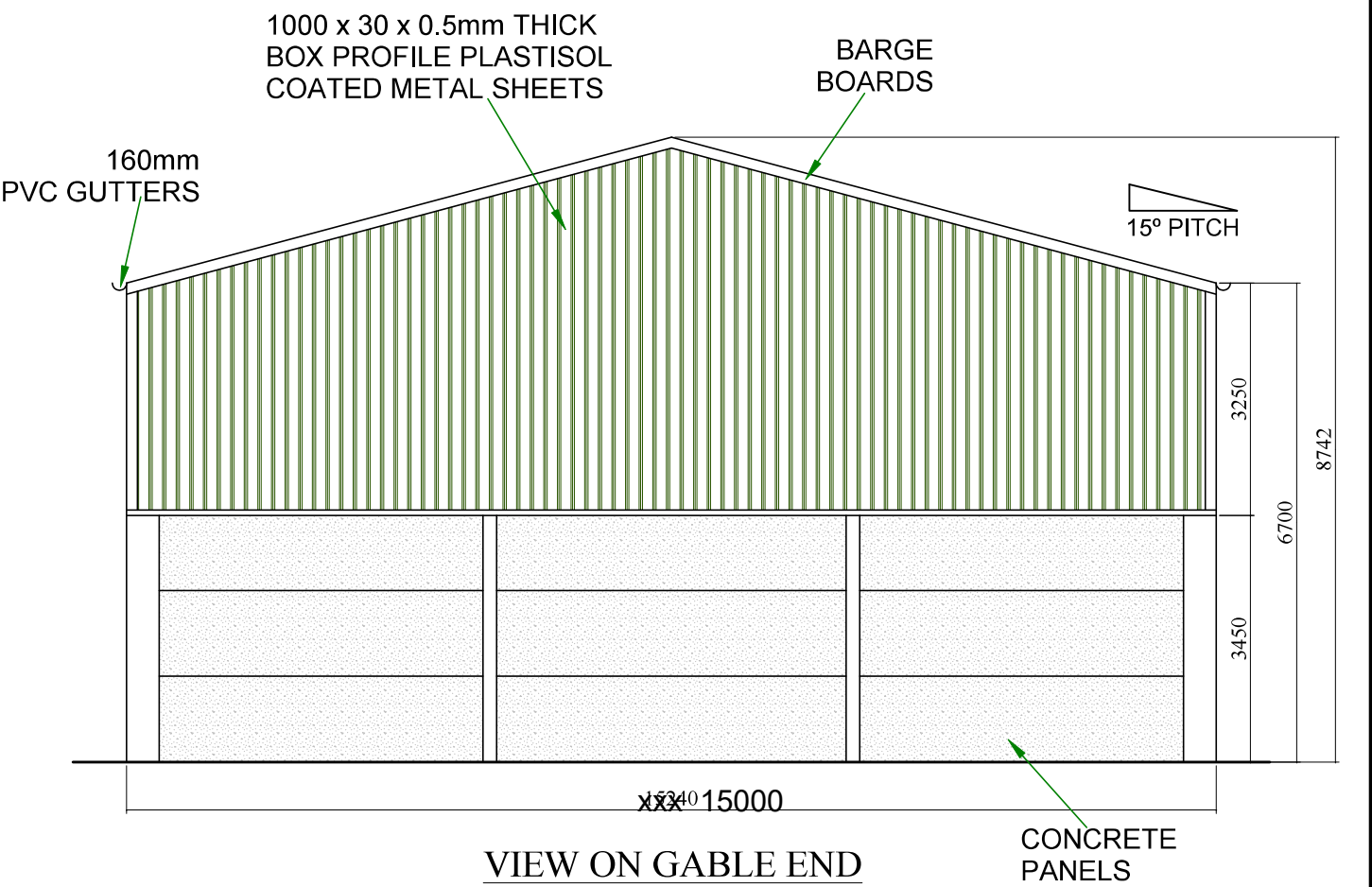
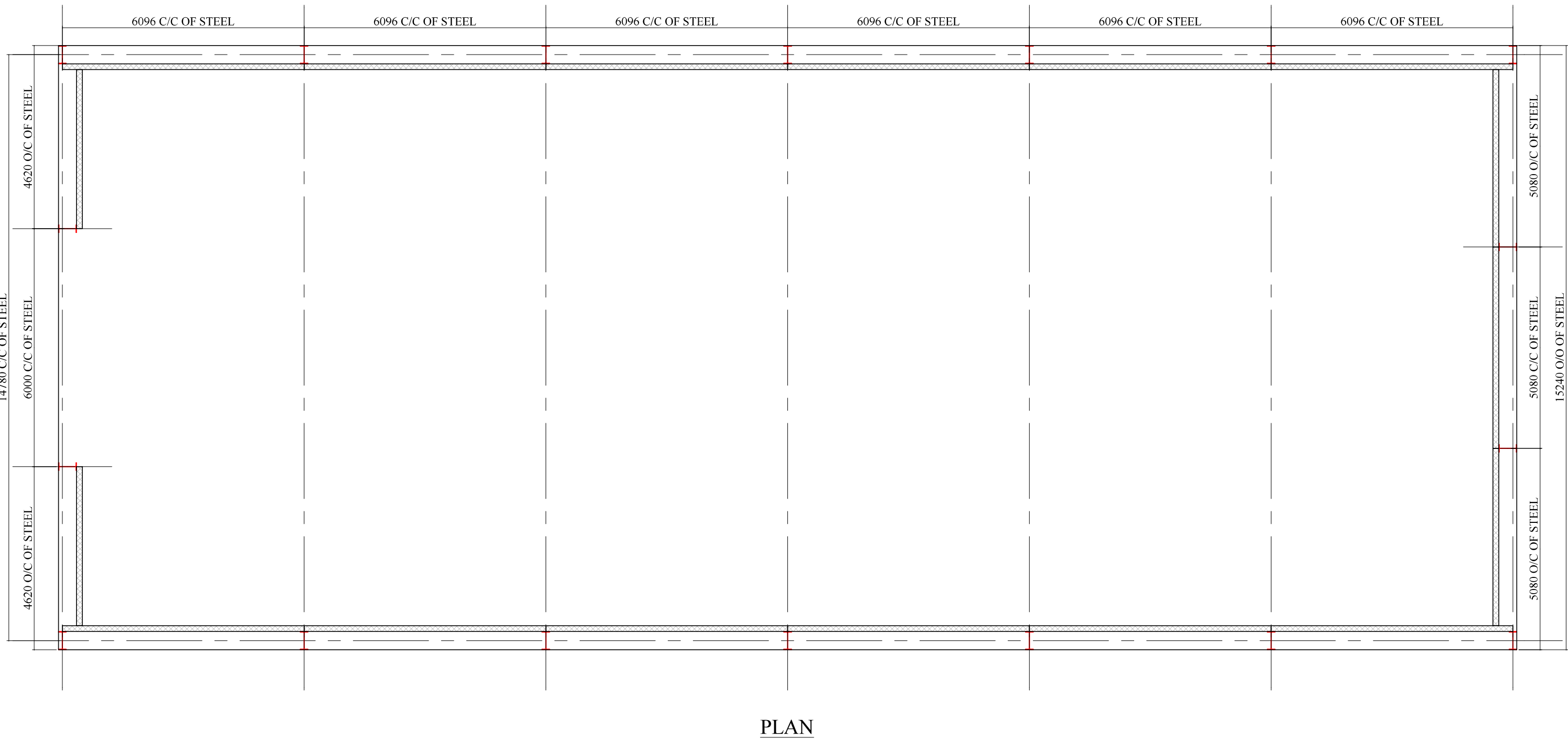
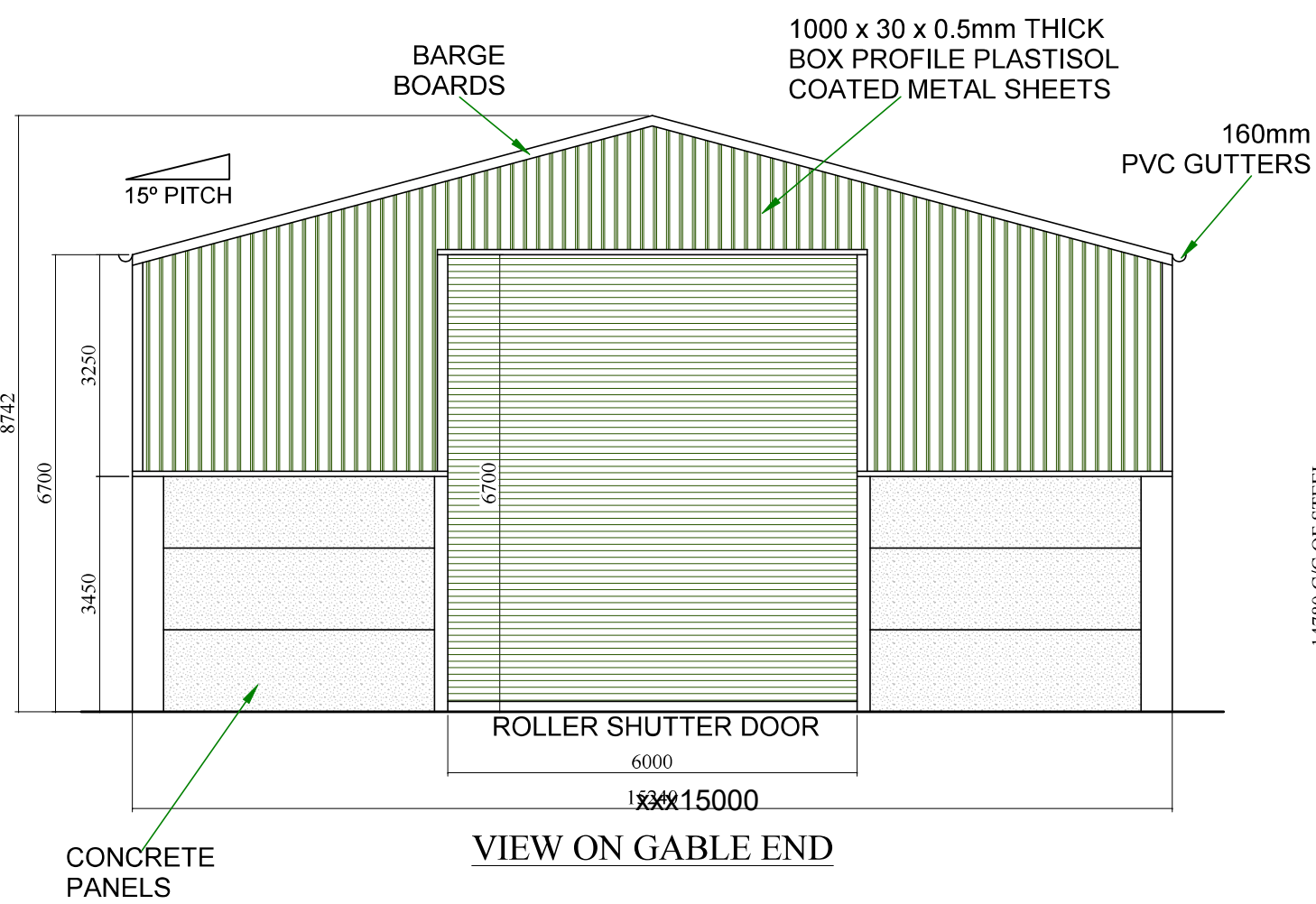
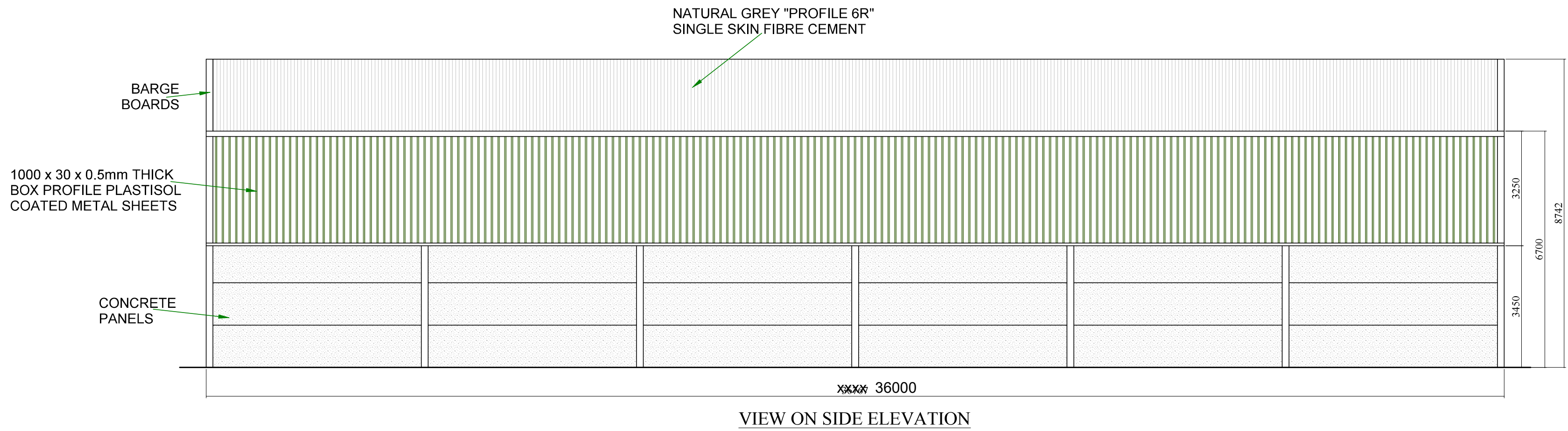
Metham Hall Farm, Metham, Goole, DN14 7YB



THIS DRAWING IS A PLANNING SUBMISSION DRAWING BUT THE PLANNING DECISION NOTICE ISSUED BY THE LOCAL AUTHORITY SHOULD BE CONSIDERED AS BEING THE DEFINITIVE DOCUMENT WITH REGARD TO THE PERMISSION GRANTED.

THIS DRAWING SHOULD NOT BE USED AS A WORKING DRAWING OR FOR ERECTION PURPOSES . IT IS ONLY AN ELEVATION DRAWING FOR SUBMISSION TO THE LOCAL AUTHORITY TO TRY TO GAIN PLANNING PERMISSION.

2273-CPR-0168-WC



Framework:

457 x 191 x 82Kg UB stanchions.
305 x 165 x 40Kg UB portal rafters.
457 x 191 x 67Kg UB Gable Pillars.
CHS eaves ties
CHS rafter braces in both end bays of the roof and vertical bracing in both end bays of each side.
Pressed steel galvanised purlins.
225 x 75mm Timber wallplates.
175 x 75mm Timber rails.

Cladding:

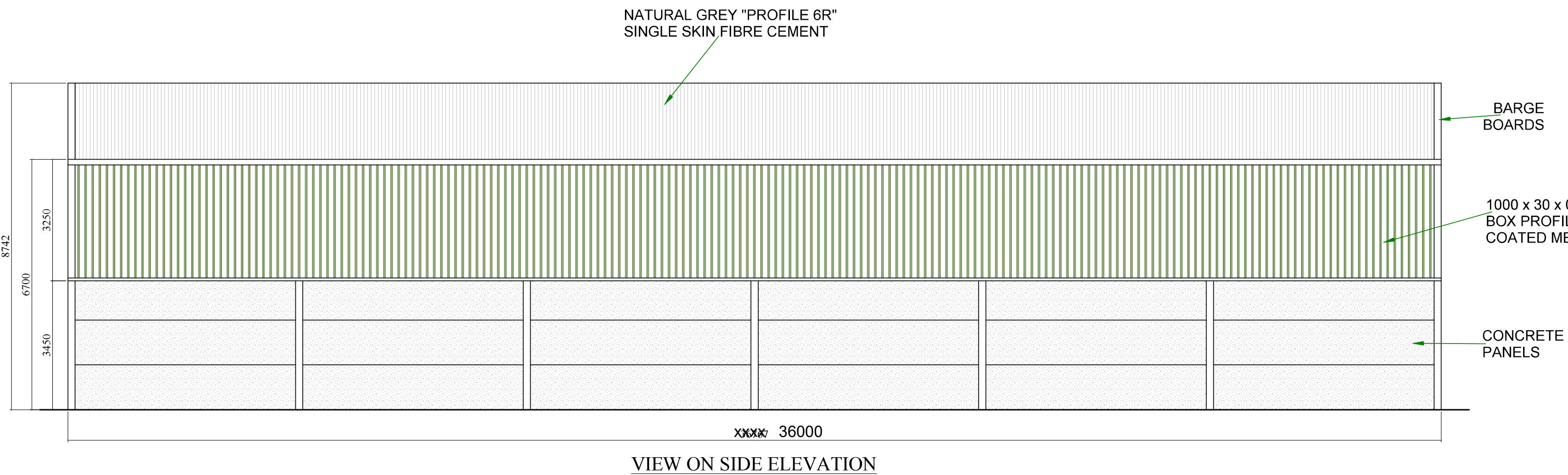
Roof:


Natural grey "Profile 6R" single skin fibre cement sheets. The roof to incorporate crown ridge & barge boards. 160mm half round P.V.C. gutters and fall pipes.

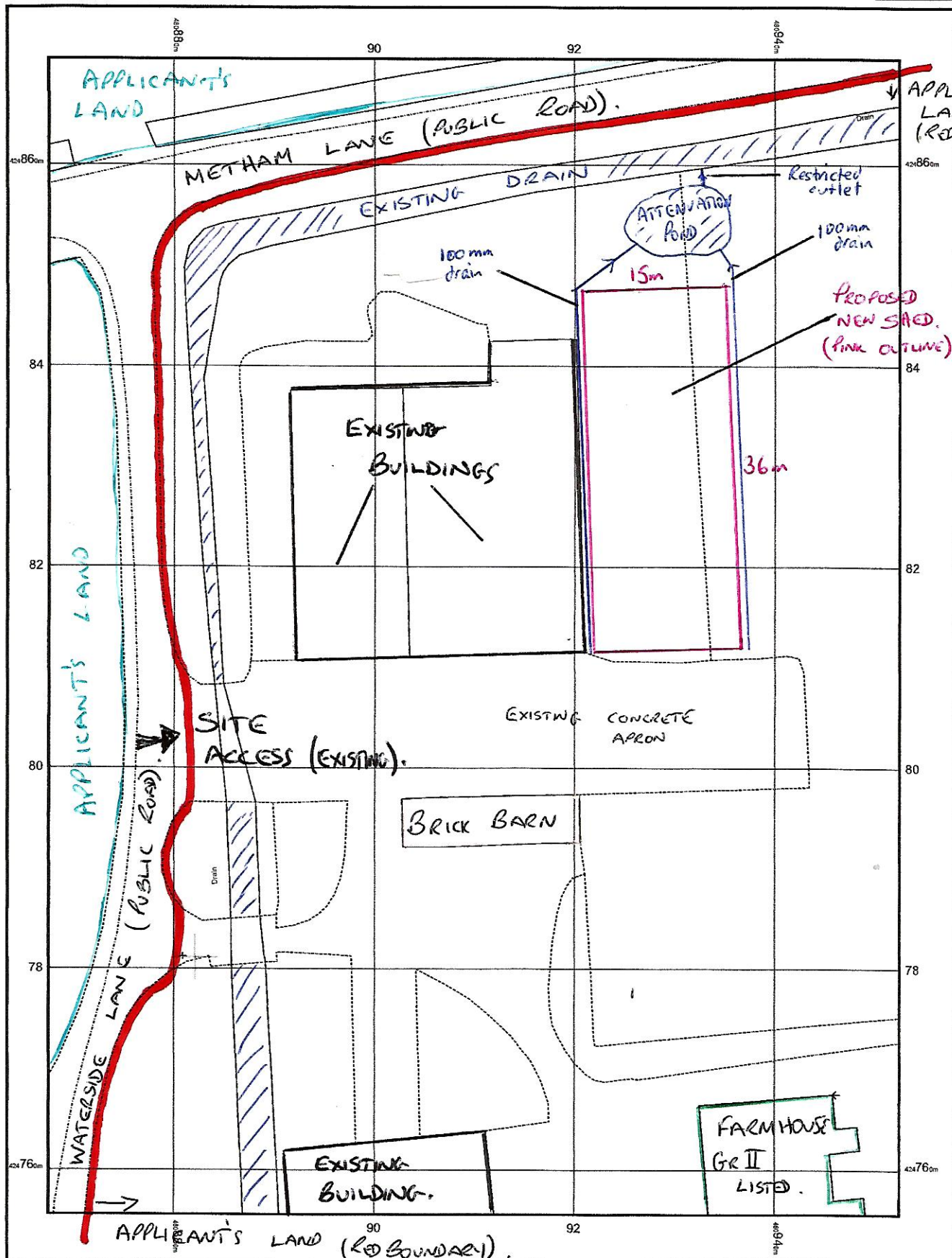
Verticals:

1000 x 30 x 0.5mm thick Box profile plastisol coated metal sheeting to the levels detailed on the elevations.

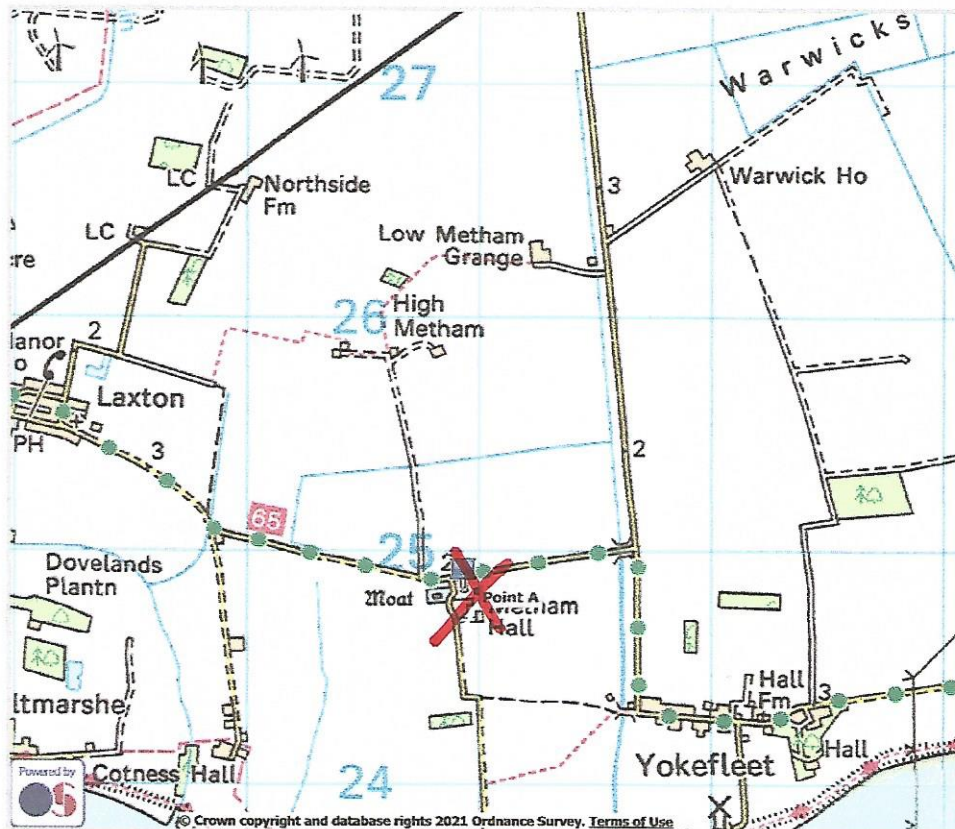
All cladding materials to be agreed with the local authority, but generally to match the existing adjacent buildings.



Client P GARDHAM LIMITED COMMON FARM BARMBY MOOR YORK YO42 5EW		
Job Title PROPOSED NEW AGRICULTURAL BUILDING - MR WILLIAMSON, GOOLE		
Drawing Title PLAN AND ELEVATIONS		
 email: sales@wareingbuildings.co.uk web: www.wareingbuildings.co.uk J Wareing & Son (Wrea Green) Ltd Whinbrick Works Blackpool Road Westby Preston PR4 2RJ Tel: 01772 682159 or 01772 682924 Fax: 01772 671071		
Scale 1:100 @ A1	Date DEC 2018	Drawn MTH
Drawing Number P6247-01		Rev.



UK Grid Reference Finder - Ordnance Survey Map



B. WILLIAMSON & SON
METHAM HALL FARM
METHAM
GOOLE
DN 14 7YB.

NAT. GRID. SE80931 24828

Laxton Parish Council

Accounts for Payment

February 2020

Payments made to be noted

Payee	Details	Total	VAT
Alan Bravey	Salary - January	£163.84	0

Payments to be Authorised

Payee	Details	Total	VAT
HMRC	PAYE – January	£32.80	
HMRC	Paye – February	£32.80	
Alan Bravey	Salary – February – (£131.04 less overpayments in December / January of £65.60 – see HMRC payments.)	£65.44	0