

Laxton Parish Council Correspondence Record

23 November 2016 to 17th January 2017

The Clerk will circulate correspondence when considered appropriate. If Councillors would like to see a copy of correspondence that has not be circulated, please notify the Clerk on laxtonpc@btinternet.com or 07932 016856.

Ref	Date Received	Attached?	From	Purpose of Correspondence	Additional Information
316	25/11/16	Y	Environment Agency	Feedback on drain odour.	
317	30/11/16	Y	Humberside Police	Introduction of new Police Sergeant and Newsletter	
318	8/12/16	N	ERYC	Thanks for displaying dog fouling signs	
319	12/12/16	N	ERNLLCA	Advising no changes are planned to extension of referendum principles to Parish Council precept.	
320	12/12/16	Y	ERYC	Neighbourhood Planning Winter Newlsetter	
321	12/12/16	Y	ERNLLCA	December Newsletter	
322	14/12/16	N	ERYC	To cut roadside grips and a swale in the verge to help dissipate water by the level crossing.	
323	21/12/16	N	BT	Agreed to the Parish Council request to repaint the phone box in 2017.	
324	21/12/16	N	ERYC	Invitation to nominate to Chairman's awards	
325	6/1/17	Y	Env Agency	Humber Newsletter	
326	13/1/17	Y	ERYC	Response to ERYC CCG on Urgent Care Services	
327	17/01/17	N	Laxton Village Hall	Introduction of new booking clerk.	

Search Mail

Search Web

Laxton

Account Info

Go

Sign Out

Home

Inbox

Contacts

Notepad

Calendar

Switch to the newest Yahoo Mail

Compose

Delete

Reply

Reply All

Forward

Actions

Apply

Previous

Next

Inbox (73)

Drafts (45)

Sent

Spam (71) [Empty]

Trash (43) [Empty]

My Folders [Edit]

Laxton drain Friday, November 25, 2016 3:49 PM S

From: "Neale Cynthia" <cynthia.neale@environment-agency.gov.uk>

To: "laxtonpc@btinternet.com" <laxtonpc@btinternet.com>

Full Headers Printable View

Dear Mr Bravey

I am writing further to your e mail regarding the odour from the drain in Laxton.

I have been in contact with Yorkshire Water and they have been out to site again to check the drain. They have an unmapped surface water outfall which they checked together with the outfall from the pumping station. These were both clear.

Like you mention in your e mail, they also noticed an abundance of leaves and it could be that these are rotting and causing a smell. If the IDB doesn't have responsibility for cleaning out the ditch it may be an option for the residents to arrange for this to be done themselves. One other possible cause of the odour could be that one of the properties has mistakenly connected a washing machine or sink into the surface water drain which is discharging to the ditch. The Parish Council could produce a letter for each of the nearby properties. This is a link to the connect right website which has some useful information: <http://www.connectright.org.uk/> I understand that Laxton is mostly on combined sewers but there may be a connection to the surface water outfall that Yorkshire Water identified and they may be able to help you map it.

I'm sorry I don't have any positive resolutions to the problem but thank you for reporting this to us. I have to advise you that as this issue does not appear to be having a serious impact on the environment are unable to investigate further at this time. Whilst we appreciate receiving these reports, unfortunately we have to focus our efforts on the more serious incidents in order to make best use of our resources.

Please continue to use our 24 hour hotline to report any environmental incidents. The reports we receive are invaluable in helping us build a clearer picture of where problems may be occurring and whether we need to investigate further.

Kind regards
Cynthia

Cynthia Neale
Environment Officer

Tel: 0203 025 7996
Int: 57996
Email: cynthia.neale@environment-agency.gov.uk

Coverdale House
Aviator Court
Amy Johnson Way
Clifton Moor
York
YO30 4GZ

Yorkshire Area of the Environment Agency

Information in this message may be confidential and may be legally privileged. If you have received this message by mistake, please notify the sender immediately, delete it and do not copy it to anyone else.

We have checked this email and its attachments for viruses. But you should still check any attachment before opening it. We may have to make this message and any reply to it public if asked to under the Freedom of Information Act, Data Protection Act or for litigation. Email messages and attachments sent to or from any Environment Agency address may also be accessed by someone other than the sender or recipient, for business purposes.

Click [here](#) to report this email as spam

Compose

Delete

Reply

Reply All

Forward

Actions

Apply

Previous

Next

**LEX AUTOLEASE**

LEASE FOR LESS

Lease business vehicles for less with our special offers.

OUR LATEST OFFERS





Protecting Communities, Targeting Criminals, Making a Difference

Parish/Town News Release

Enquiry Office Hours - Tues to Thurs 9am – 5pm (closed 12noon to 1pm)

Telephone 101 extn 2550

I would like to introduce myself as the new Police Sergeant of Goole and Pocklington /Wolds Weighton Policing Teams.

I am really pleased to have been selected to manage the team, following the recent move of my predecessor Sergeant Ryan Reed. Ryan will be moving to Bridlington to set up a new early intervention team, aim at targeting young offenders and lead them away from a life of crime.

My name is David Lonsdale and I have been working for Humberside Police for over 13 years. In that time I have undertaken a number of different and challenging roles. Initially I joined as a response officer before becoming a Neighbourhood officer and more recently on promotion I worked as Detective Sergeant at Grimsby and Scunthorpe.

Prior to my promotion as a Detective Sergeant I had spent most of my career within the East Riding and especially in Goole and the surrounding villages. I am very familiar with the area and the unique policing challenges that it brings. I am passionate about policing and have a real sense urge to drive down crime rates and tackle the causes of crime and anti-social behavior which causes so much stress and anxiety to others. I am keen to hear about the issues facing the town and your expectations of the police and suggestions to improve community relationships.

I am looking forward to bringing my experience and knowledge to the team and with it I will hopefully bring new and innovative ideas and working practices so that we can deliver the service that the community of Goole, Pocklington and the surrounding areas deserve.

Over the next few months I will be attended as many community events as possible. I want to meet as many local residents that I can and make sure you get to know my face. I am approachable and always willing to listen. I have already attended a number of meetings and look forward to future meetings as it is an excellent way in which to engage the community.

If you wish to talk to me about any issue then please contact me or have any suggestions or ideas to improve the service we currently deliver please make contact with me at Goole Police Station, Estcourt Street, Goole DN14 5AF.

Sgt David Lonsdale



Protecting Communities, Targeting Criminals, Making a Difference

Parish/Town News Release

Howdenshire Update for December 2016

1. Priority

Issue: Youths causing annoyance around the areas of the Church and playing fields in Gilberdyke.

Throughout December, officers will continue to patrol the above areas on Clementhorpe Road to deter any potential anti-social behaviour. Anyone caught engaging in anti-social behaviour will be dealt with under the FAIRWAY process jointly with East Riding of Yorkshire Council. It is unlikely that any discretion will be shown.

2. Meetings

Police Drop In Surgery

PCSO Simon Palmer will be holding a surgery at the Travelling Library, Gilberdyke Memorial Hall car park, Clementhorpe Road, Gilberdyke on the 11th January (11:00-12:00)

3. Examples of Crimes in your area.

- Entry was gained into a garage in North Cave and power tools and other items were stolen.
- 2 cast iron urns were stolen from outside a property in Brighton.
- Entry was gained into a secure garage in North Cave and a cycle and strimmer were taken.
- Entry was gained into a secure garage in Newport and items stolen.
- A secure garden shed and a car were broken into in Newport and fishing equipment stolen.
- Entry was gained into a van in Gilberdyke and tools stolen.
- Entry was gained into a garage in North Cave and tools were stolen.
- Entry was gained into a secure van in Holme Upon Spalding Moor and a tool kit bag was stolen.

4. News and Appeals

Keep your presents off the burglars list this Christmas.

Well it's that time of year again, the trees are going up, the Christmas Lights are being turned on, those Christmas decorations that have been on display in most of our larger shops since September now look relevant, and the same festive adverts are on the TV again and again.

Yes, Christmas is here and with it, the excitement and the frantic rushing around have begun in earnest. It's a time when everything goes up a gear. We're in a hurry; we need to do loads of things; we have so much to plan. But, if we're not careful, whilst doing all of these things, we can become careless and lose sight of those simple crime prevention measures that we practice all year.

Just as Christmas is a busy time for everyone, it can equally be a time of plenty for the opportunist thief if we let them take advantage of our rushing around. Follow these simple steps to avoid becoming a target for crime and have a crime free Christmas and New Year.



Protecting Communities, Targeting Criminals, Making a Difference

Parish/Town News Release

- When shopping – be mindful of your bags and whats inside them, try and use a bag that has a zip fastener and ensure that your purse/wallet and mobile phone are out of sight and out of easy reach of pick pockets.
- Don't leave your handbag unattended in shopping baskets or trolleys, pushchairs or mobility scooters.
- In cafes and restaurants keep bags on your lap, between your feet or place the strap around a chair leg.
- Don't hang your handbag on the back of your chair where you can't keep an eye on it and don't leave your mobile phone on view on a table. Mobile phones are frequently targeted by thieves and easily swiped when your back is turned even just for a minute.
- Don't leave any shopping bags or other items on view in your car, always ensure that they are out of view by placing them in the car boot.
- Always try and park in a well lit car park or street and check that your car is secure!
- Consider your home security too - don't leave the curtains open and all your presents and Christmas tree on display whilst you're out. Leave a radio on, use timer lights to ensure that it looks like that someone is at home and ensure your property is secure by making sure that your garage door, house doors, garden sheds/outbuildings and windows are all locked.

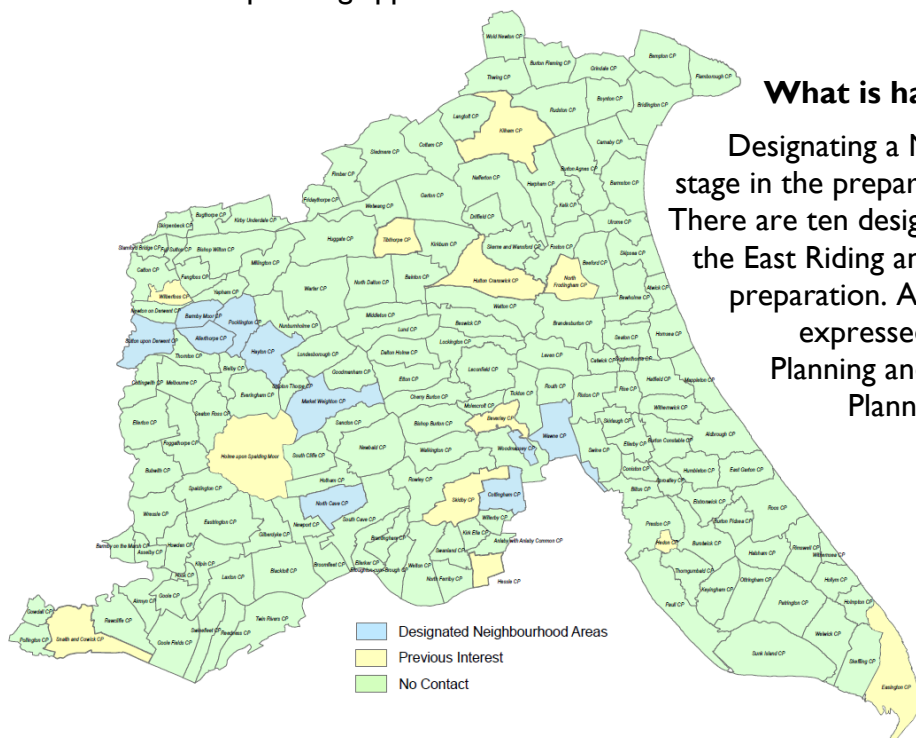
Don't give a thief an early Christmas present at your expense!

Neighbourhood Planning News

Winter 2016/17



Welcome to the first edition of East Riding Neighbourhood Planning News, a newsletter prepared for Town and Parish Councils. It contains guidance on Neighbourhood Planning and examples of what is happening in the East Riding. Neighbourhood Plans are prepared by Town and Parish Councils and include local planning policies to shape development and help determine planning applications.



What is happening in the East Riding?

Designating a Neighbourhood Area is the first stage in the preparation of a Neighbourhood Plan. There are ten designated Neighbourhood Areas in the East Riding and eight Plans are actively under preparation. A number of other parishes have expressed an interest in Neighbourhood Planning and held a meeting with a Council Planning Policy Officer to discuss the topic further.

What should we consider when deciding whether to prepare a Neighbourhood Plan?

Here are some things to bear in mind when you are thinking about taking forward a Neighbourhood Plan:

- **What it can do:** Make sure you have a clear understanding of what a Neighbourhood Plan is and what it can achieve. Be sure it's the right thing for your area and think about how you want to influence new development.
- **Time commitment:** Preparation of a Neighbourhood Plan is mostly done by volunteers in your community. This does not have to be limited to members of the Town/Parish Council and there is funding to pay for expert help where needed.
- **The process:** A Neighbourhood Plan will carry legal weight in making decisions on planning applications. It has to be supported by detailed research and evidence.
- **Everyone's invited:** Producing a Neighbourhood Plan is a community-wide affair. It's a great opportunity to talk to everyone across the area.

Focus on... Preparing a Project Plan

Preparing a Neighbourhood Plan may appear to be a daunting task but this will be made easier with a project plan. Project plans set out the activities that will need to be carried out, the resources required and an estimation of how much time should be set aside to complete each task. Guidance on preparing a project plan is available from:

<http://www.ourneighbourhoodplanning.org.uk/resources/documents/29>

Locality (an organisation that offers support to communities preparing neighbourhood plans) have prepared a useful project plan template to aid better time management and help make the process more manageable. This is free to download here:

<http://mycommunity.org.uk/resources/neighbourhood-plan-project-planner/>

Neighbourhood Planning Events (past and future)

The Forward Planning team facilitated two Neighbourhood Planning events in July 2016 to help explain Neighbourhood Planning to Town and Parish Councils in the East Riding. A total of 66 people attended the events from 31 Town and Parish Councils. Guest speakers from Planning Aid and Town/Parish Councils currently preparing a Neighbourhood Plan shared their experiences.

Feedback suggested the events were useful and there is an interest in Neighbourhood Planning across the East Riding. In response to this feedback Forward Planning are considering the potential for further Neighbourhood Planning events in 2017.

If you would like to be informed of future events, or have an idea about what they should cover, please contact the Forward Planning team (details below).

Top tip.... Woodmansey Parish Council

"Make sure you have evidence available for your Neighbourhood Plan area, for example demographics, traffic numbers and public transport"



This top tip was provided by Councillor Stephen Oliver of Woodmansey Parish Council.

Latest news

Cottingham Parish Council recently completed a 6 week public consultation on their final Draft Neighbourhood Plan. The Cottingham Neighbourhood Plan is focussed on providing local planning guidance to complement the policies and allocated sites set out in the East Riding Local Plan and is available to view here:

<http://www.cottinghamparishcouncil.org.uk/latest-news.aspx>

Where can I find further information on Neighbourhood Planning?

The Council has published a series of topic notes that provide further guidance on Neighbourhood Plans. There is a step by step guide to preparing a Neighbourhood Plan (note 3) and further information on the support and funding available for Town and Parish Councils (note 6). The topic notes are available to view here:

<http://www2.eastriding.gov.uk/neighbourhood-planning>

Let us know what you think

Let us know what you think about the newsletter and if there are any news items or information you would like to see in the next edition.

Contact details

If you are interested in finding out more about Neighbourhood Planning, please contact the Forward Planning Team:

forward.planning@eastriding.gov.uk

01482 391738

ERNLLCA

East Riding and Northern Lincolnshire
Local Councils Association



Newsletter

DECEMBER 2016



MERRY CHRISTMAS



Yet another busy year for parish and town councils and it is now time for everyone to take a short break from public life to spend time with those closest to us.

ERNLLCA wishes all our member councils a very Merry Christmas and a Happy (and busy!) New Year.

Our office will close at 4 pm on THURSDAY 22ND DECEMBER and will re-open at 9.00am on TUESDAY 3RD JANUARY 2017.

NALC – leadership changes

NALC has announced that a “new, dynamic and exciting leadership team will lead NALC in 2017”. At the December annual meeting of NALC’s National Council, members elected Cllr Sue Baxter (Worcestershire County Association) to be the chairman, with Cllr Derek Liddell (South Yorkshire County Association) and Cllr Ken Browse (Devon County Association) to be the vice-chairs.

Cllr Baxter is the first ever woman elected to this post and ERNLLCA has forwarded its congratulations.

NALC recognises that next year will be an important one as the challenges and opportunities of devolution and localism become more urgent.





External Audit

SAAA has announced the successful conclusion of the procurement process to secure the services of external auditors.

Contracts have been awarded for the supply of limited assurance audit reviews to three audit firms who have been appointed for the five-year period commencing 1 April 2017. The successful companies are: PKF Littlejohn; Mazars and Moore Stephens.

Contracts have been signed ahead of schedule on terms that will enable SAAA to undertake its various tasks including the quality control and monitoring of suppliers without making any further call on public funds. As yet, ERNLLCA has not been informed which audit firm will be allocated to our area.

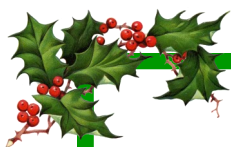
Local Government Ombudsman

Proposals to replace Local Government Ombudsman with a Public Service Ombudsman include the remit of this new body being extended to Town and Parish Councils.

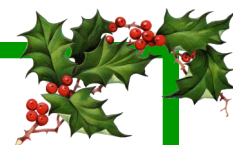
Currently parish and town councils do not have a regulatory body or Ombudsman. This leaves complaints about local councils largely within the self-regulatory framework of internal complaints procedures, unless there is a matter subject to specific regulation, such as a criminal or financial wrongdoing.

The Bill published recently would be a game-changer for the sector if it becomes law as it will allow members of the public to complain to the Ombudsman on matters relating to parish and town council maladministration, service failure, or failure to provide a service.





Funding - Transparency Code for small councils



Has your council applied yet?

Councils with an annual turnover of less than £25,000 per year (net of VAT) are eligible to apply for funding to help them meet the requirements of the Transparency Code to have in place a website on which financial and governance information must be posted. In the current year councils in the ERNLLCA area have benefitted to a sum totaling nearly £51,000 and there are other applications in the pipeline.

Surprisingly nearly 50% of eligible councils have not applied – why not? There is funding to support the creation of a website; the purchase of IT equipment; and to pay for training and the Clerk's time.

Even if yours is a small council which already has a website, you can apply for funding to pay for the Clerk's time in keeping the website up-to-date.

The Government is keen to push on with promoting the Fund and potentially eligible councils will be contacted early in 2017.

Engagement with the Transparency Code by eligible councils is not optional. An eligible council which has not met the requirements of the Code will be acting unlawfully, a fact that will be picked up by the Internal Auditor.

If you know of any eligible council which has not applied, please urge them to do so.

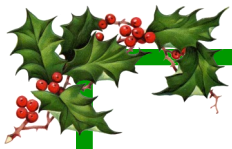
The application form guidance is on the home page of the ERNLLCA website (www.ernllca.info) please scroll to the bottom of the page or request one by email at enquiries@ernllca.info

Finance training

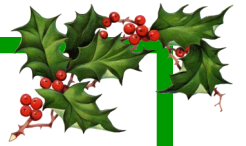
Some time ago we asked new Clerks if they might benefit from finance training. There was a very positive response and we are pleased to report that we have identified a provider and dates are being considered.

This will be an officer only all-day event, concentrating on Clerk/RFO operational and statutory responsibilities and will be very much about starting at the basics and moving through to year-end. This event will be targeted at Clerks/RFO's without a lot of experience but that is not to say that more experienced Clerks/RFO's will not be welcome.

Watch out for details being circulated.



2016 Annual Conference



This year's conference was held on Friday 18 November 2016 at the Village Hotel in Hull at which sixty-four places were booked.

Speakers delivered sessions on risk management; the need for Clerks to undertake Continuous Professional Development; devolution of services; effective lobbying of Members of Parliament; data handling; the Local Council Award Scheme; planning; and changes to councillors' responsibilities at the financial year-end.



The feedback from the evaluation forms was very good and we were pleased to receive some constructive criticism from a few attendees which has been discussed by the Executive Committee and the comments will be taken into account in the preparation and delivery of future events.

Planning for the 2017 is already underway and ERNLLCA will announce the date in January.



Council tax

As communicated to councils last week, council tax referendum principles have **not** been extended to parish and town councils in 2017/18.

The Secretary of State for Communities and Local Government in his House of Commons speech stated that town and parish councils “play an important role in our civic life. We have decided that we will defer our proposals this year, while keeping the level of precepts set by town and parish councils under close review. I expect all town and parish councils to clearly demonstrate restraint when setting increases that are not a direct result of taking on additional responsibilities. I am also actively considering with the sector ways to make excessive increases more transparent to local taxpayers.”

NALC and ERNLLCA were able to mobilise an impressive campaign to persuade the Secretary of State that bringing our councils under referendum principles would be counter-productive. ERNLLCA is grateful to those local Members of Parliament recognised our concerns and lobbied on our behalf.

Councils may be interested to know that the Local Government Minister, Marcus Jones MP, telephoned NALC’s new Chairman, Councillor Sue Baxter, to speak to her directly about the settlement and the government’s decision. This courtesy is seen as being most welcome.

In response, The Chairman of NALC issued the following statement; “I very much welcome the government’s decision not to extend council tax referendum principles to any size of parish or town council in 2017/18. Parishes play an important role in communities and local democracy and I am pleased the Secretary of State acknowledged this in his statement and he has listened to the sector’s concerns. I would urge councils to continue to be fiscally responsible and I am keen to work with the Government on ways to increase transparency and engagement with residents.”

There is probably just one (hyphenated) word to sum up the outcome –
Re-sult!



Planning Day

One of the very clear points arising from our 2016 Conference was the value councillors and clerks place on planning training.

We are pleased to announce that a Planning day will be held at the Village Hotel in Hull on Friday 24 March. Details should be finalized by early January and booking forms will be sent out to councils. We hope to cover a great deal at the event which will be delivered by planning professionals.

Once again, we will offer a limited number of places at a reduced fee for councils with an electorate of 2000 and under.

Watch out for the booking form popping into your in-box!

More than a Pub – Plunkett Foundation

The Community Pub Business Support Programme is a unique two year programme established to help support community ownership of pubs in England. Its value is £3.62 million and is jointly funded by the Department for Communities and Local Government and Power to Change. A comprehensive package of business development support, advice and loan and grant funding has been developed to assist community pub businesses consider their viability at all stages of their development which includes:

- A flexible package of support including an advice line

- Events

- Workshops

- Peer-to-peer study visits

- Business development advice

- Flexible bursary awards of up to £2,500 (inclusive of VAT) to fund prefeasibility-costs such as public consultation and valuations.

- Combined loan and grant funding up to £150,000 but not exceeding £75,000 in-grant

<https://www.plunkett.co.uk/more-than-a-pub>



Issued by:

ERNLLCA, Suite 8, Waters Edge Business Centre, Maltkiln Road, Barton upon Humber,

DN18 5JR

Tel: 01652 661617

Email: enquiries@ernllca.info

www.ernllca.info

Humber – keeping you informed

December 2016

This newsletter provides an update on work taking place and/or planned to help reduce the risk of flooding to people and properties around the Humber estuary.



Comprehensive Review of the Humber Strategy

Work will begin in earnest in the New Year on the Comprehensive Review of the Humber Strategy (our plan for managing tidal flood risk, that was approved by the Government in 2007), following appointment of consultants. This work will be undertaken with our partners, including the 12 local authorities around the estuary and along the tidally-affected rivers). One of the most important outputs of the review will be the new six-year programme from 2021. Scheme development for this will start early within the review programme to ensure a smooth transition from the current six-year programme. While this is being undertaken, we will continue to deliver our six year (2015-2021) programme of work, investing more than £86 million of government funding to reduce the risk of flooding to more than 50,000 properties around the estuary. Our Chief Executive, Sir James Bevan (pictured), visited the Humber on 7



Chief executive Sir James Bevan at North Ferriby earlier this year

September to learn more about the complexities of managing tidal flood risk around the estuary. He attended the Humber Leaders' Board to hear about how we are working in partnership to tackle tidal flood risk.

Water Level Project: The Humber Estuary Water Level Project will produce a revised water level profile for the estuary. The profile tells us how often we expect to experience high water levels, and therefore flooding, now and into the future. We are progressing with model set-up and calibration and will be undertaking some initial runs of the model in the New Year.

Water for Wildlife and Farmers: This project investigates how techniques used in the US and Netherlands to rotationally wet agricultural land can provide benefits for farming, biodiversity and flood risk management. Similar techniques such as warping (raising land levels by deliberately flooding areas with silt-laden water) have previously been used by farmers around the Humber. We are currently investigating the technical and economic feasibility of delivering these techniques and are hoping to progress some small-scale field trials to begin to gather evidence on their effectiveness.

Humber Estuary Erosion Protection (HEEP) Project: A £5 million project to repair erosion-damaged flood defences around the Humber estuary is progressing. The Humber Estuary Erosion Protection (HEEP) project has initially identified 34 sites that may need to be upgraded but the precise sites will be verified and confirmed by survey. One of the key objectives of the HEEP project is to deliver repairs which also serve to create habitat rather than simply providing a technical solution. Since the storm surge of January 1953, defences have been significantly improved but over the years these defences have deteriorated due to the harsh environment. An estuary defence survey is currently being carried out. This will confirm the particular sites in need of attention and the nature of work required at specific times. Based on the findings a business case will be prepared, with a view to design and building work starting in 2017. The anticipated cost of repairing the 34 sites is currently £5 million, but that could change depending on the result of the consultant's investigations.

Dynamic Humber: A collaborative project with Hull University, Dynamic Humber models how the estuary reacts to high water levels, and the impacts in the floodplain, as well as other work including considering the impacts of a break of the Spurn peninsula. We have recently upgraded the model and increased its resolution to provide us with more accurate information on the depth, extent and velocity of flooding during high water levels. The model will provide us with information on the effectiveness of flood storage solutions as well as helping us understand how defence raising schemes will impact risk. Using this data we can build an evidence base around how our defence system works across the Humber Estuary.

North bank

River Hull: Work to repair flood defences along the River Hull has begun. Contractors are currently doing a survey of the riverbanks. The £36.5-million scheme will see defences repaired along a 4.6 mile (7.5km) stretch of the river, which protect about 63,000 properties in Hull. The defences have deteriorated over time, posing a potential risk of flooding when river levels are high. Work will begin in the New Year. The first phase of work is due to be completed by 2019. Some 39 locations along the river have been identified as having defences in need of work and repairing them will ensure the existing level of protection is maintained.

Hull Frontage: The tidal flood defences protecting the city of Hull and the surrounding area form a complicated system that has developed over many years. We have now identified which defences we need to focus on along the city frontage.

We are looking to deliver a programme of improvement works in collaboration with landowners and are therefore talking to those with an interest in improving these defences to enable works to start.

We hope to have all necessary approvals in place by summer 2017 to allow works to start early in 2018. We expect construction work will take around three years.

Linked to this project to improve the Humber defences in Hull, we must create additional habitat areas to ensure we continue to meet the requirements of environmental legislation

Airmyn: Work to repair the embankment at Airmyn began at the end of November 2016. Initial site works will be to infill a deep scour hole in the channel bed below the foreshore slip, downstream of the clocktower. We anticipate doing this work by boat from the contractor's compound at the jetty upstream at Rawcliffe. The budget for the work is £1.8 million. This money will come through Defra.



Paull: Work to create the longest glass tidal defence structure in the UK has been completed in Paull. The innovative glass barrier is part of a larger £30-million five-year project which, when finished, will provide improved flood protection to more than 14,000 properties in the Hull and East Riding areas. The huge scheme is being delivered by East Riding of Yorkshire Council as the Lead Local Flood Authority in the area, working closely with Hull City Council and the Environment Agency, and supported by funding from Defra and the Humber Local Enterprise Partnership (LEP). The new glass wall has been fixed to the existing

tidal defence wall, which was built in the 1980s, and is 520 metres long and 1.1-metre high - raising the total barrier to 6.8 metres above sea level.

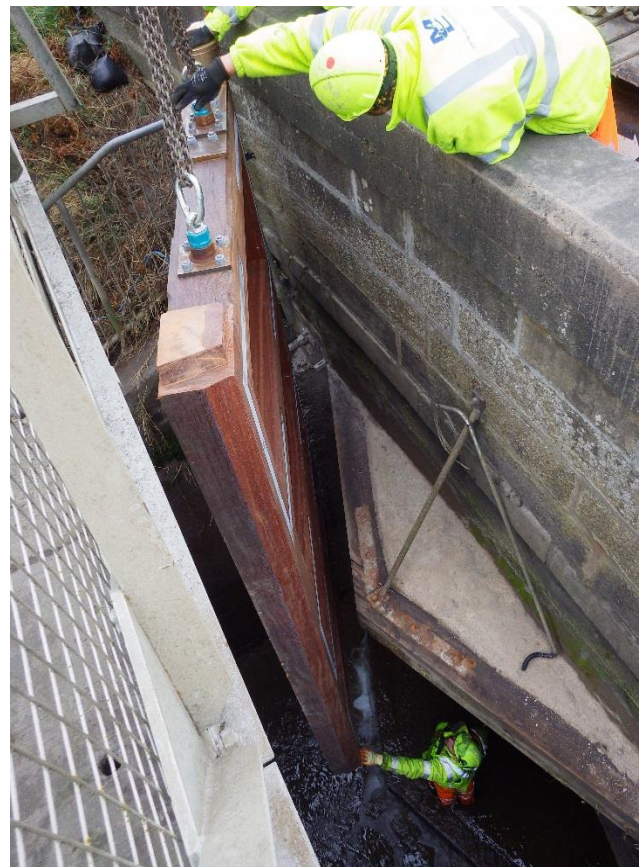
Skeffling Managed Realignment Scheme: Public surgeries to explain the work the Environment Agency is doing for this managed realignment project have been held in Patrington, Easington, and Welwick. Drop-ins have also been held in the summers of 2015 and 2016. At both types of event EA staff have been available to answer questions from members of the local community. Newsletters giving an update on project work are being sent out to the community on a regular basis.

South bank

South Ferriby & Barton: We have now appointed consultants to continue in the development of both Winteringham Ings & South Ferriby and Barton to New Holland schemes. This will include carrying out hydraulic modelling and looking at initial options for the schemes.

We have recently completed ground investigations, during which we took soil samples to understand ground conditions, along the existing flood embankments at South Ferriby Ferriby (as well as between Blacktoft and Yokefleet on the North bank) in the past few weeks. Ecology surveys, to identify wildlife and any protected species within the potential area of both projects, have also taken place. We are currently talking to the local community and partners about the options to reduce flood risk.

South Ferriby sluice improvements: We are currently carrying out a £1.5-million scheme to refurbish Ancholme sluice and adjacent East and West Drain outfall structures. We appointed a contractor this summer and a works compound will be set up in the Environment Agency visitor carpark at certain times during the works. A limited number of parking spaces will still be available at these times. The works, which are expected to be completed by summer 2017 depending on tidal and weather conditions, will see four sets of hardwood doors replaced. Replacement of the East Drain tidal doors has already taken place.



Above and right: The new tidal doors being installed at South Ferriby

Outfall refurbishment works: We have completed works to outfalls at New Holland, East Halton and South Killingholme during 2016. This has included new timber doors at New Holland and a new sluice gate at East Halton.

Port of Immingham: We are supporting project leads North East Lincolnshire Council (NELC) and Associated British Ports to reduce the risk of flooding to the port, national infrastructure and adjacent community. Phase one of the scheme, to replace and strengthen the port's outer lock doors, is now underway. Installation of the doors and control equipment is expected to be completed by summer 2017. This phase also includes construction of new flood defence wing walls either side of the lock. It is expected that phase 2, which will improve tidal flood defences at the port, will begin by 2020. ABP is developing the design.

Keadby Terminal Assisted Outfall Scheme: Since July 2016, progress has continued to deliver the approved remedial works to sustain operation of the Keadby pumping station for the next five years. The short-term investment has included the replacement of two pump engines, both of which have now been commissioned and are now fully operational. Other remedial works completed during the past six months have included the refurbishment and/or replacement of component parts to engines; the replacement of a trash screen cleaner; and the repair of penstocks. The works are scheduled to be complete by April 2017. The Environment Agency is continuing to work with various partners to finalise its plans for the delivery of the approved



long-term investment that forms part of the wider Isle of Axholme Flood Risk Management Strategy. The plans will deliver protection to residential and commercial properties as well as strategically important infrastructure. The plans will not impact upon the current level of flood protection provided by the Keadby pumping station.

Isle of Axholme: We are working closely with our local partners, Doncaster East Internal Drainage Board, Isle of Axholme and North Nottinghamshire Water Level Management Board, North Lincolnshire Council and Doncaster Metropolitan Borough Council to understand the future management and operation of the Isle of Axholme watercourses, flood defences and pumping stations.

We are also working closely with the Keadby Project to understand the impacts of flooding on the area and how our wider partners interact with the Isle of Axholme. The River Torne modelling work for the Isle of Axholme is central to this and is in progress. There are currently 17 schemes within the Isle due for completion by 31 March 2021, of which one has already been completed.

Collectively the work will help to manage flood risk for more than 20,000 residential and commercial properties, 35.4 kilometres (22.0 miles) of motorway-critical infrastructure as well as railways, electricity networks and pipelines and more than 46,000 hectares of agricultural land. A multi-organisation governance structure has been put in place to help progress the strategy.

Are you prepared for future floods?

Although flood defences reduce the likelihood of flooding, the risk can never be removed entirely. Flooding can happen at any time and we advise people to take simple practical steps to help reduce the impact of flooding to their homes or business.

- Check your flood risk by visiting www.gov.uk/check-if-youre-at-risk-of-flooding or calling Floodline on 0345 988 1188
- If you are at risk, sign-up to our free flood warning service
- To make a flood plan for your home or business visit www.gov.uk/prepare-for-a-flood/make-a-flood-plan

Contact

If you have any questions, please contact our national customer contact team on 03708 506 506 (landlines are charged the same as a local geographic call but mobiles may vary) or email enquiries@environment-agency.gov.uk. Alternatively, visit www.gov.uk/flood or call Floodline on 0845 9881188 or 0345 9881188. Follow us on Twitter [@EnvAgencyYNE](https://twitter.com/EnvAgencyYNE), [@EnvAgencyAnglia](https://twitter.com/EnvAgencyAnglia) or [@LincsOpsEA](https://twitter.com/LincsOpsEA)



EAST RIDING

OF YORKSHIRE COUNCIL

County Hall Beverley East Riding of Yorkshire HU17 9BA Telephone (01482) 887700

www.eastriding.gov.uk

Caroline Lacey Director of Corporate Resources

Jane Hawcard - Chief Officer
East Riding of Yorkshire Clinical Commissioning Group
Health House
Grange Park Lane
Willerby
HU10 6DT

Your Ref:
Our Ref: Urgent Care Services Consultation
Enquiries to: Gareth Naidoo
Email: gareth.aidoo@eastriding.gov.uk
Tel. Direct: (01482) 393206
Date: 13 January 2017

Dear Jane

Consultation on Urgent Care Services - Health, Care and Wellbeing Overview and Scrutiny Sub-Committee Response

I write on behalf of the Health, Care and Wellbeing Overview and Scrutiny Sub-Committee as a statutory consultee in the Urgent Care Services consultation. Please find enclosed the response to the consultation from the Sub-Committee.

May I take this opportunity to thank the CCG and all its officers that have participated in discussion with the Sub-Committee and provided it with all the relevant and necessary information over the course of the consultation. It has been much appreciated the openness with which the CCG has worked with the Sub-Committee on this matter and for all the support the CCG has provided the Sub-Committee with so that it can make a fully informed response to the consultation. The Sub-Committee thank the CCG for its co-operation and willingness to continue to listen to its concerns on this matter.

I do hope that the CCG, its Council of Members and its Governing Body seriously consider the views, concerns and recommendations of the Sub-Committee raised in the attached response when making its decision, and kindly request that this response is distributed to all Members for their consideration.

The Sub-Committee look forward to receiving the outcome of the consultation and the CCG's decision in due course and hope to continue its close working relationship with the CCG in the future.

If you require any further information, please do not hesitate to contact me.

Yours sincerely

Gareth Naidoo - Senior Committee Manager
for the Health, Care and Wellbeing Overview and Scrutiny Sub-Committee

Enc. Response of the East Riding of Yorkshire Council's Health, Care and Wellbeing Overview and Scrutiny Sub-Committee Response to East Riding of Yorkshire Clinical Commissioning Group's Urgent Care Services Consultation

cc. All East Riding of Yorkshire Clinical Commissioning Group Council of Members
All Members of East Riding of Yorkshire Clinical Commissioning Group Governing Body
Quintina Davies - Head of Communications and Engagement

Response of the East Riding of Yorkshire Council's Health, Care and Wellbeing Overview and Scrutiny Sub-Committee Response to East Riding of Yorkshire Clinical Commissioning Group's Urgent Care Services Consultation

Local people care passionately for and value their local NHS services and this has never been more so recognised than during this consultation. The consultation has provided a huge outcry of strong public feeling regarding the consultation options. Representations have been made by the public to this Sub-Committee, ward, town and parish councillors, MPs, the media and GPs. Strength of public opinion for their local services has been encapsulated by the sheer number of signatories to the many petitions established across the East Riding. The Health, Care and Wellbeing Overview and Scrutiny Sub-Committee can only but echo East Riding resident's concerns and fears for their local NHS services and urge East Riding of Yorkshire Clinical Commissioning Group to give these due consideration when making its decision.

The Health, Care and Wellbeing Overview and Scrutiny Sub-Committee do, however, understand the need for change across health and social care sector and recognise the financial challenges facing East Riding of Yorkshire Clinical Commissioning Group set against the context of the Humber, Coast and Vale Sustainability and Transformation Plan and the directive from NHS England for urgent care centres.

Proposed Options for Urgent Care Centres

Summary of Health, Care and Wellbeing Overview and Scrutiny Sub-Committee views

- The Health, Care and Wellbeing Overview and Scrutiny Sub-Committee agree there is a need to standardise service provision across the East Riding and support, in principle, the creation and development of Urgent Care Centres across the East Riding.
- The Health, Care and Wellbeing Overview and Scrutiny Sub-Committee believe that the Urgent Care Centre guidance issued by NHS England does not differentiate between very well populated urban settings and large rural areas such as the East Riding. The Health, Care and Wellbeing Overview and Scrutiny Sub-Committee believe the guidance issued has been too rigidly applied by East Riding of Yorkshire Clinical Commissioning Group and is not reflective of the East Riding geography, which covers almost 1,000 square miles, and population need.
- The Health, Care and Wellbeing Overview and Scrutiny Sub-Committee do not believe that the options consulted on provide East Riding residents with equal access to quality health and care services.
- The Health, Care and Wellbeing Overview and Scrutiny Sub-Committee do not feel the options consulted on meet all residents' needs, particularly when taking into account rurality, highways network and transport provision.
- The Health, Care and Wellbeing Overview and Scrutiny Sub-Committee is extremely disappointed that the options consulted on were limited and, for example, did not provide any options for Driffield and the Holderness coast.
- The Health, Care and Wellbeing Overview and Scrutiny Sub-Committee believe that the list of 81 options used for shortlisting did not consider maintaining one Minor Injury Unit (for example in Driffield or along the Holderness coast), or some other form of placed based service, whilst creating two or three Urgent Care Centres. The Health, Care and Wellbeing Overview and Scrutiny Sub-Committee believe this to be a missed opportunity in the pre-consultation work and consultation options put forward.
- The Health, Care and Wellbeing Overview and Scrutiny Sub-Committee feel the bespoke model developed by East Riding of Yorkshire Clinical Commissioning Group has not been tested robustly based on current operations and due diligence applied to provide the necessary levels of assurance.

Alternative option proposed by the Health, Care and Wellbeing Overview and Scrutiny Sub-Committee

- That the East Riding of Yorkshire Clinical Commissioning Group maintain some place based services in the Driffield, Hornsea and Withernsea even if this means reduced hours - whether this be a Minor Injury Unit, a reduced Urgent Care Centre or something else to meet need, including seasonal variation.

This alternative provision could be funded by re-considering the way place based services are commissioned across the system, for example in the Driffield and Holderness area (ie how community services, ambulance services, patient transport services and primary care services etc. are provided).

Concerns of the Health, Care and Wellbeing Overview and Scrutiny Sub-Committee

- The opportunity provided to better understand the modelling process was welcomed by the Health, Care and Wellbeing Overview and Scrutiny Sub-Committee but confidence is still lacking as the model used should have been tested on current financial costs, not on predicted operational costs, to ensure a truer picture. There is therefore a lack of due diligence in the model and the Health, Care and Wellbeing Overview and Scrutiny Sub-Committee do not have the assurance that the options proposed are viable.
- Assumptions in the model are founded on changes being made to primary care but the Health, Care and Wellbeing Overview and Scrutiny Sub-Committee heard that no firm proposals have been agreed by primary care providers. It is evident that some primary care providers are not supportive of the proposals, even though some of these are part of East Riding of Yorkshire Clinical Commissioning Group's Council of Members, and the Health, Care and Wellbeing Overview and Scrutiny Sub-Committee believe this to be a significant challenge for the East Riding of Yorkshire Clinical Commissioning Group to overcome.
- It would appear that the opportunity has not been taken to develop plans on the proposed options with providers given the changes on the horizon (ie new community services provider and the role of Yorkshire Ambulance Service). The Health, Care and Wellbeing Overview and Scrutiny Sub-Committee is unconvinced that there will be the resources and skilled workforce necessary across the whole of the East Riding and that the opportunity has been missed to consider place based strategic solutions in the first instance before developing the options for consultation.
- Whilst acknowledging that rurality has been considered by East Riding of Yorkshire Clinical Commissioning Group the assumptions in the model show approximately 30 percent of patients will not present anywhere (due to the rural nature of the East Riding, its highways infrastructure and transport provision). This may result in their eventual presentation at Hull Royal Infirmary Accident & Emergency, something that goes against what the options are trying to avoid.

Recommendations:

- (i) That East Riding of Yorkshire Clinical Commissioning Group maintains some place based services in the Driffield, Hornsea and Withernsea areas (even if this means reduced hours - whether this be a Minor Injury Unit, a reduced Urgent Care Centre or something else to meet need, including seasonal variation) by re-considering the way place based services are commissioned across the system.**
- (ii) Providing some place based services in the Driffield, Hornsea and Withernsea are maintained then the Health, Care and Wellbeing Overview and Scrutiny Sub-Committee would then support the creation of three Urgent Care Centres at Goole, Beverley and Bridlington.**

Proposed Options for Wrap-Around Patient Care

Summary of Health, Care and Wellbeing Overview and Scrutiny Sub-Committee views

- The Health, Care and Wellbeing Overview and Scrutiny Sub-Committee understand that Option A is the preferred option and that Option B is more for future consideration.
- The Health, Care and Wellbeing Overview and Scrutiny Sub-Committee support, in principle, the further expansion of Time to Think beds across the East Riding but not at the detriment of the Holderness and Bridlington area.
- The Health, Care and Wellbeing Overview and Scrutiny Sub-Committee support, in principle, the development of Home First beds across the East Riding.
- The Health, Care and Wellbeing Overview and Scrutiny Sub-Committee feel that a greater level of understanding and comprehensive assurance over deliverability of the remodelled service is required by East Riding of Yorkshire Clinical Commissioning Group. For example, there has been very limited direct engagement with residential and nursing home providers and the community services workforce to make the vision a reality, particularly across the more rural parts of the East Riding. The Health, Care and Wellbeing Overview and Scrutiny Sub-Committee has great reservations that this can be achieved.
- It is felt by the Health, Care and Wellbeing Overview and Scrutiny Sub-Committee that the proposals will have huge knock-on effects for adult social care and limited assurance has been provided that there will be sufficient overall bed capacity in residential care and the workforce needs have been fully considered and understood by East Riding of Yorkshire Clinical Commissioning Group.

Alternative option proposed by the Health, Care and Wellbeing Overview and Scrutiny Sub-Committee

- That East Riding of Yorkshire Clinical Commissioning Group reconsiders fully the population needs for community beds and residential and nursing care beds in totality to provide certainty of current and future need given that current demand on beds is very high.

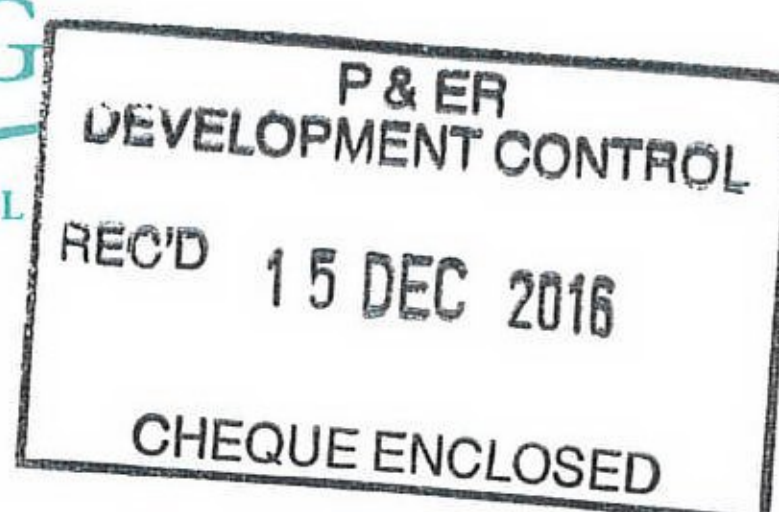
Concerns of the Health, Care and Wellbeing Overview and Scrutiny Sub-Committee

- The model data used appears to be limited - a greater degree of sensitivity analysis needs to be undertaken to take into account seasonal variation, ie high and low demand.
- The NHS struggle to recruit and retain staff in the Holderness area. The Health, Care and Wellbeing Overview and Scrutiny Sub-Committee cannot envisage how by closing the Withernsea and Bridlington beds will ensure that there will still be adequate workforce and care provision to successfully provide Time to Think beds and Home First beds.
- The Health, Care and Wellbeing Overview and Scrutiny Sub-Committee feel that there has been a lack of meaningful communication and engagement with residential or nursing homes over whether the sector can provide the required number of Home First beds and Time to Think beds.
- It is felt that East Riding of Yorkshire Clinical Commissioning Group has not fully considered the new community services provider operational plan to ensure that there is a sufficiently skilled workforce to cover the Bridlington and Holderness areas should the beds in these locations be closed.
- The Health, Care and Wellbeing Overview and Scrutiny Sub-Committee remain to be convinced regarding bed capacity as the default will be that people will end up at Hull Royal Infirmary because they will be unwilling/unable to travel to Beverley or their nearest Time to Think bed. This will increase demand at Hull Royal Infirmary which goes against what the consultation options are trying to prevent.
- Adult social care will be affected by the proposals and this has not been clearly communicated or considered by East Riding of Yorkshire Clinical Commissioning Group.

- Current demand on residential and nursing and community beds is around 97 percent. The Health, Care and Wellbeing Overview and Scrutiny Sub-Committee has huge concern that the closure of Bridlington and Withernsea community beds will only exacerbate this problem.

Recommendations:

- (i) The Health, Care and Wellbeing Overview and Scrutiny Sub-Committee support the principle of what is being proposed in Option A, but not the closure of beds at Bridlington and Withernsea.
- (ii) That East Riding of Yorkshire Clinical Commissioning Group fully reconsiders the population needs for community beds and residential and nursing care beds in totality to provide certainty of current and future need, given that current demand on beds is very high.



Application for removal or variation of a condition following grant of planning permission.

Town and Country Planning Act 1990.

Planning (Listed Buildings and Conservation Areas) Act 1990

You can complete and submit this form electronically via the Planning Portal by visiting www.planningportal.gov.uk/apply

Publication of applications on planning authority websites

Please note that the information provided on this application form and in supporting documents may be published on the Authority's website. If you require any further clarification, please contact the Authority's planning department.

Please complete using block capitals and black ink.

It is important that you read the accompanying guidance notes as incorrect completion will delay the processing of your application.

1. Applicant Name and Address

Title:	MR	First name:	IAN
Last name:	SCREETON		
Company (optional):			
Unit:		House number:	
House name:	OLD VICARAGE		
Address 1:	CHAPEL LANE		
Address 2:			
Address 3:			
Town:	LAXTON		
County:	E.D. YORKSHIRE		
Country:	ENGLAND		
Postcode:	DN14 7TT		

2. Agent Name and Address

Title:	MR	First name:	TERENCE W. G.
Last name:	LITTEN		
Company (optional):	LITTEN ASSOCIATES		
Unit:		House number:	30
House name:	GREEN SHUTTERS.		
Address 1:	WEST END ROAD		
Address 2:			
Address 3:			
Town:	COTTINGHAM		
County:	E.D. YORKSHIRE		
Country:	ENGLAND		
Postcode:	HU16 5PN		

3. Site Address Details

Please provide the full postal address of the application site.

Unit:		House number:		House suffix:	
House name:	OLD VICARAGE				
Address 1:	CHAPEL LANE				
Address 2:					
Address 3:					
Town:	LAXTON				
County:	E.R. YORKSHIRE				
Postcode (optional):	DN14 7TT				
Description of location or a grid reference. (must be completed if postcode is not known):					
Easting:		Northings:			
Description:					

4. Pre-application Advice

Has assistance or prior advice been sought from the local authority about this application?

☐ Yes ☒ No

If Yes, please complete the following information about the advice you were given. (This will help the authority to deal with this application more efficiently).

Please tick if the full contact details are not known, and then complete as much as possible: ☐

Officer name:

Reference:

Date (DD/MM/YYYY):
(must be pre-application submission)

Details of pre-application advice received?

5. Description Of Your Proposal

Please provide a description of the approved development as shown on the decision letter, including the application reference number and date of decision in the sections below:

CHANGE TYPE OF DOORS APPROVED ON PLANNING
CONSENT REF DC/15/03017/VAR/WESTWW

Reference number: DC/15/03017/VAR.

Date of decision (DD/MM/YYYY):

15 MARCH 2016

(date must be pre-application submission)

Please state the condition number(s) to which this application relates:

1.	CONDITION 8 APPROVED DRAWINGS	6.	
2.		7.	
3.		8.	
4.		9.	
5.		10.	

P & ER
DEVELOPMENT CONTROL

REC'D 15 DEC 2016

CHEQUE ENCLOSED

Has the development already started?

☒ Yes ☐ No

If Yes, please state when the development started (DD/MM/YYYY):

2015

(date must be pre-application submission)

Has the development been completed?

☒ Yes ☐ No

If Yes, please state when the development was completed (DD/MM/YYYY):

AUG 15 APPROX

(date must be pre-application submission)

6. Condition(s) - Removal

Please state why you wish the condition(s) to be removed or changed:

TO MATCH DOORS USED ON THE OUTBUILDINGS EXISTING IN THE VICARAGE
COURTYARD. SEE PHOTO P1

If you wish the existing condition to be changed, please state how you wish the condition to be varied:

ONLY TIMBER BOWLED DOORS ARE USED UP AND OVER METAL FLETTED DOORS.
AS SHOWN ON DRAWINGS L202.10X, 20X AND 30X

7. Ownership Certificates and Agricultural Land Declaration

One Certificate A, B, C, or D, must be completed with this application form

CERTIFICATE OF OWNERSHIP - CERTIFICATE A

Town and Country Planning (Development Management Procedure) (England) Order 2015 Certificate under Article 14

I certify/~~The applicant certifies~~ that on the day 21 days before the date of this application nobody except myself/~~the applicant~~ was the owner* of any part of the land or building to which the application relates, and that none of the land to which the application relates is, or is part of, an agricultural holding**

NOTE: You should sign Certificate B, C or D, as appropriate, if you are the sole owner of the land or building to which the application relates but the land is, or is part of, an agricultural holding.

* "owner" is a person with a freehold interest or leasehold interest with at least 7 years left to run.

** "agricultural holding" has the meaning given by reference to the definition of "agricultural tenant" in section 65(8) of the Act.

Signed - Applicant:

Or signed - Agent:

Date (DD/MM/YYYY):

CERTIFICATE OF OWNERSHIP - CERTIFICATE B

Town and Country Planning (Development Management Procedure) (England) Order 2015 Certificate under Article 14

I certify/ The applicant certifies that I have/the applicant has given the requisite notice to everyone else (as listed below) who, on the day 21 days before the date of this application, was the owner* and/or agricultural tenant** of any part of the land or building to which this application relates.

* "owner" is a person with a freehold interest or leasehold interest with at least 7 years left to run.

** "agricultural tenant" has the meaning given in section 65(8) of the Town and Country Planning Act 1990

Name of Owner / Agricultural Tenant	Address	Date Notice Served

Signed - Applicant:

Or signed - Agent:

Date (DD/MM/YYYY):



7. Ownership Certificates and Agricultural Land Declaration (continued)

CERTIFICATE OF OWNERSHIP - CERTIFICATE C

Town and Country Planning (Development Management Procedure) (England) Order 2015 Certificate under Article 14

I certify/ The applicant certifies that:

- Neither Certificate A or B can be issued for this application
- All reasonable steps have been taken to find out the names and addresses of the other owners* and/or agricultural tenants** of the land or building, or of a part of it, but I have/ the applicant has been unable to do so.

* "owner" is a person with a freehold interest or leasehold interest with at least 7 years left to run.

** "agricultural tenant" has the meaning given in section 65(8) of the Town and Country Planning Act 1990

The steps taken were:

Name of Owner / Agricultural Tenant	Address	Date Notice Served

Notice of the application has been published in the following newspaper (circulating in the area where the land is situated):

On the following date (which must not be earlier than 21 days before the date of the application):

Signed - Applicant:

Or signed - Agent:

Date (DD/MM/YYYY):

CERTIFICATE OF OWNERSHIP - CERTIFICATE D

Town and Country Planning (Development Management Procedure) (England) Order 2015 Certificate under Article 14

I certify/ The applicant certifies that:

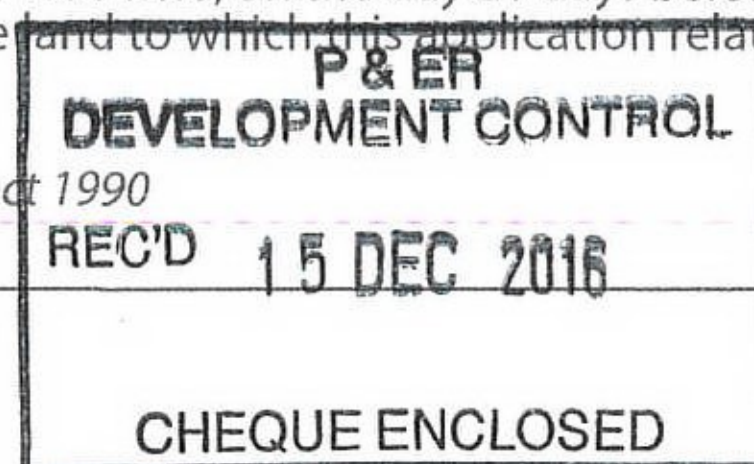
- Certificate A cannot be issued for this application
- All reasonable steps have been taken to find out the names and addresses of everyone else who, on the day 21 days before the date of this application, was the owner* and/or agricultural tenant** of any part of the land to which this application relates, but I have/ the applicant has been unable to do so.

* "owner" is a person with a freehold interest or leasehold interest with at least 7 years left to run.

** "agricultural tenant" has the meaning given in section 65(8) of the Town and Country Planning Act 1990

The steps taken were:

--



Notice of the application has been published in the following newspaper (circulating in the area where the land is situated):

On the following date (which must not be earlier than 21 days before the date of the application):

Signed - Applicant:

Or signed - Agent:

Date (DD/MM/YYYY):

8. Planning Application Requirements - Checklist

Please read the following checklist to make sure you have sent all the information in support of your proposal. Failure to submit all information required will result in your application being deemed invalid. It will not be considered valid until all information required by the Local Planning Authority has been submitted.

The original and 3 copies of a completed and dated application form:



The original and 3 copies of the completed, dated Ownership Certificate (A, B, C or D – as applicable) and Article 14 Certificate (Agricultural Holdings):

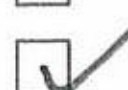


The original and 3 copies of other plans and drawings or information necessary to describe the subject of the application:



The correct fee:

195



9. Declaration

I/we hereby apply for planning permission/consent as described in this form and the accompanying plans/drawings and additional information. I/we confirm that, to the best of my/our knowledge, any facts stated are true and accurate and any opinions given are the genuine opinions of the person(s) giving them.

Signed - Applicant:

Or signed - Agent:

Date (DD/MM/YYYY):

(date cannot be pre-application)

10. Applicant Contact Details

Telephone numbers

Country code: National number: Extension number:

Country code:

Country code: Fax number (optional):

Email address (optional):

11. Agent Contact Details

Telephone numbers

Country code: National number: Extension number:

01482 845272.

Country code: Mobile number (optional):

Country code: Fax number (optional):

Email address (optional):

12. Site Visit

Can the site be seen from a public road, public footpath, bridleway or other public land?

☐ Yes

☒ No

If the planning authority needs to make an appointment to carry out a site visit, whom should they contact? (Please select only one)

☒ Agent

☐ Applicant

☐ Other (if different from the agent/applicant's details)

If Other has been selected, please provide:

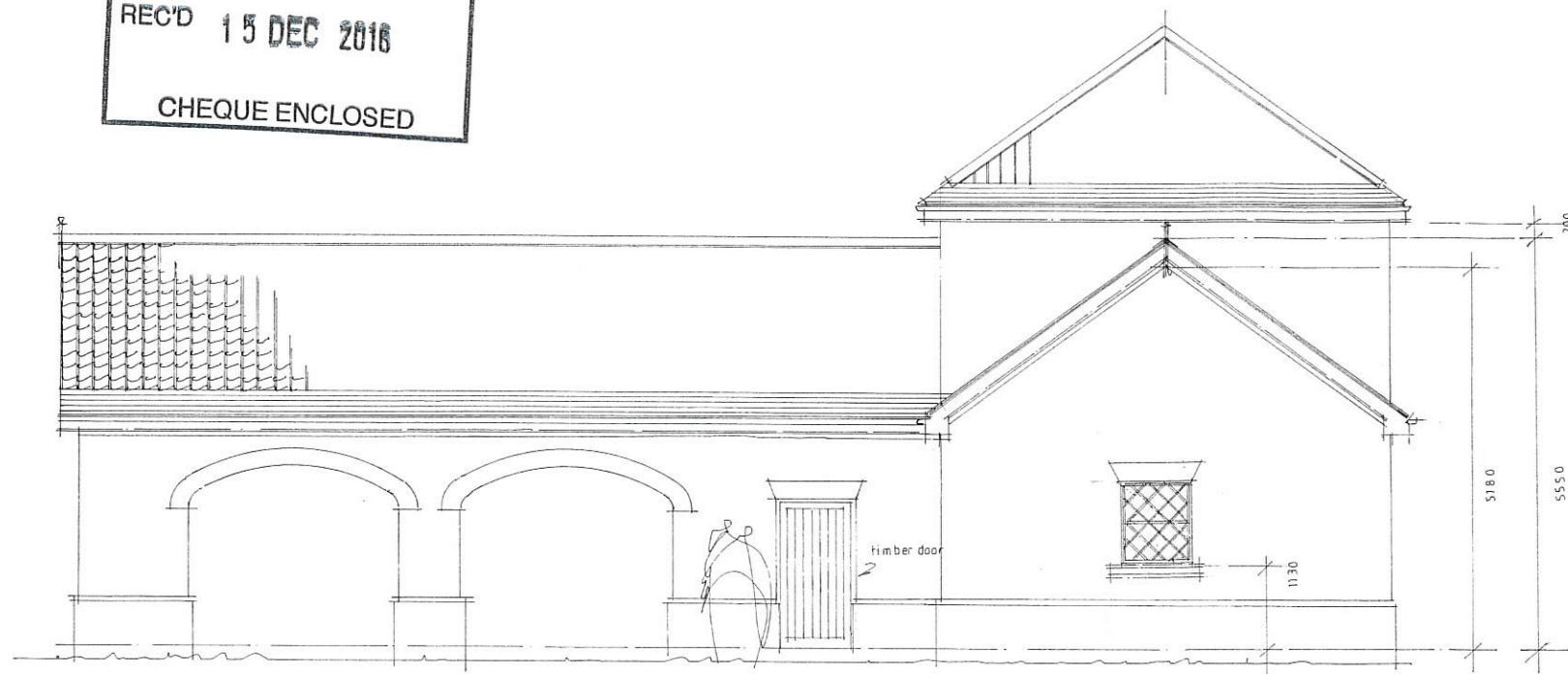
Contact name:

Telephone number:

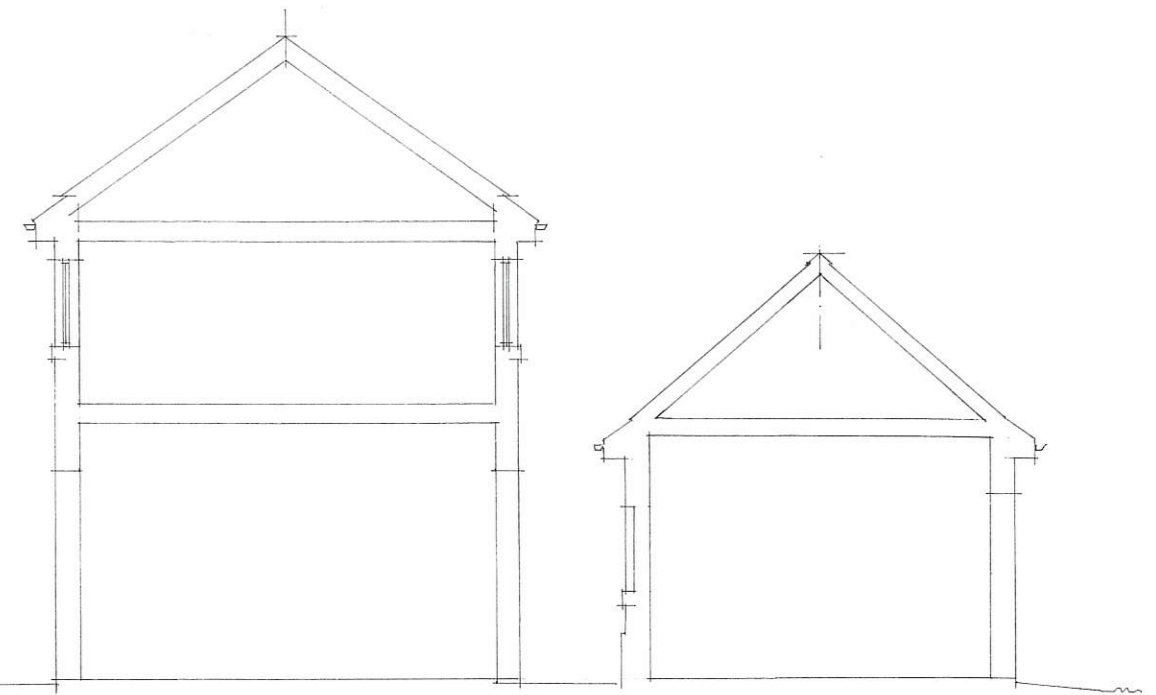
Email address:



P & ER
DEVELOPMENT CONTROL
REC'D 15 DEC 2016
CHEQUE ENCLOSED



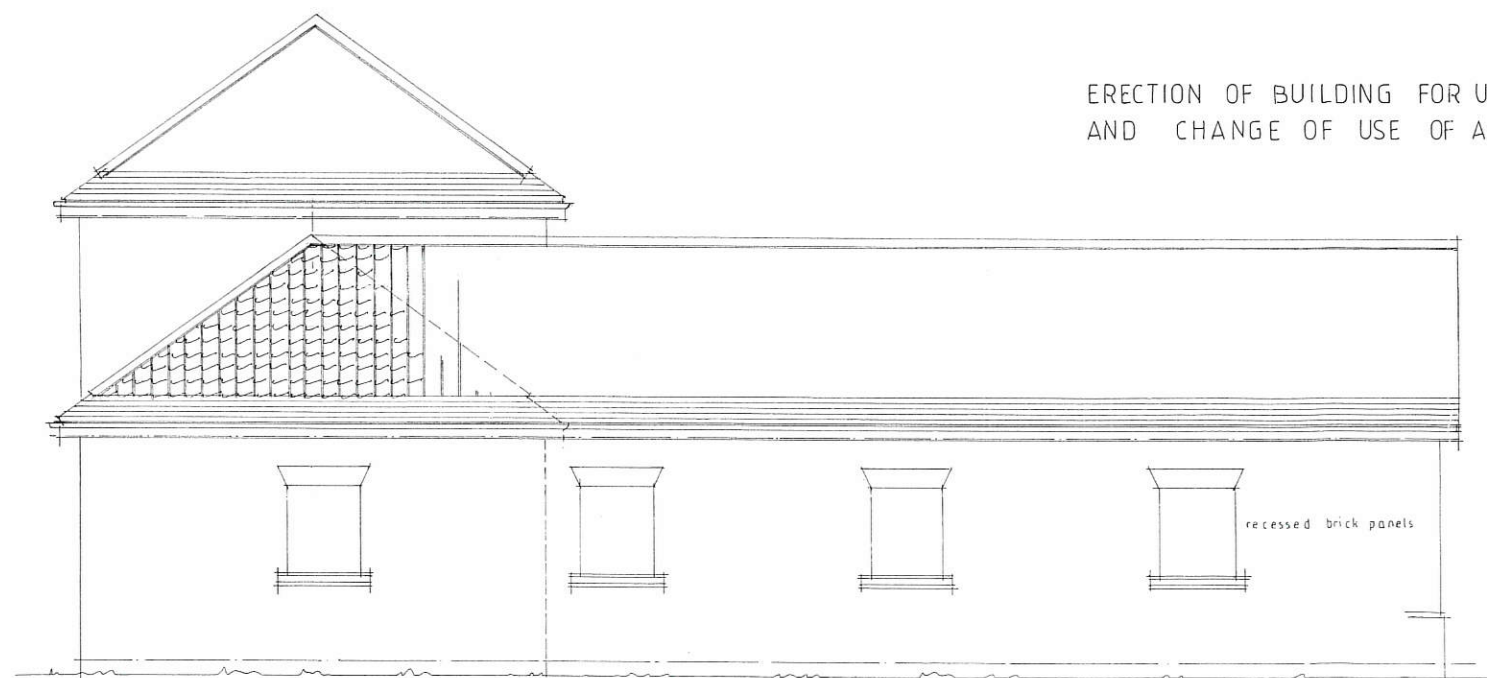
EAST ELEVATION



A · A

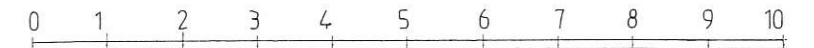
SECTIONS B · B

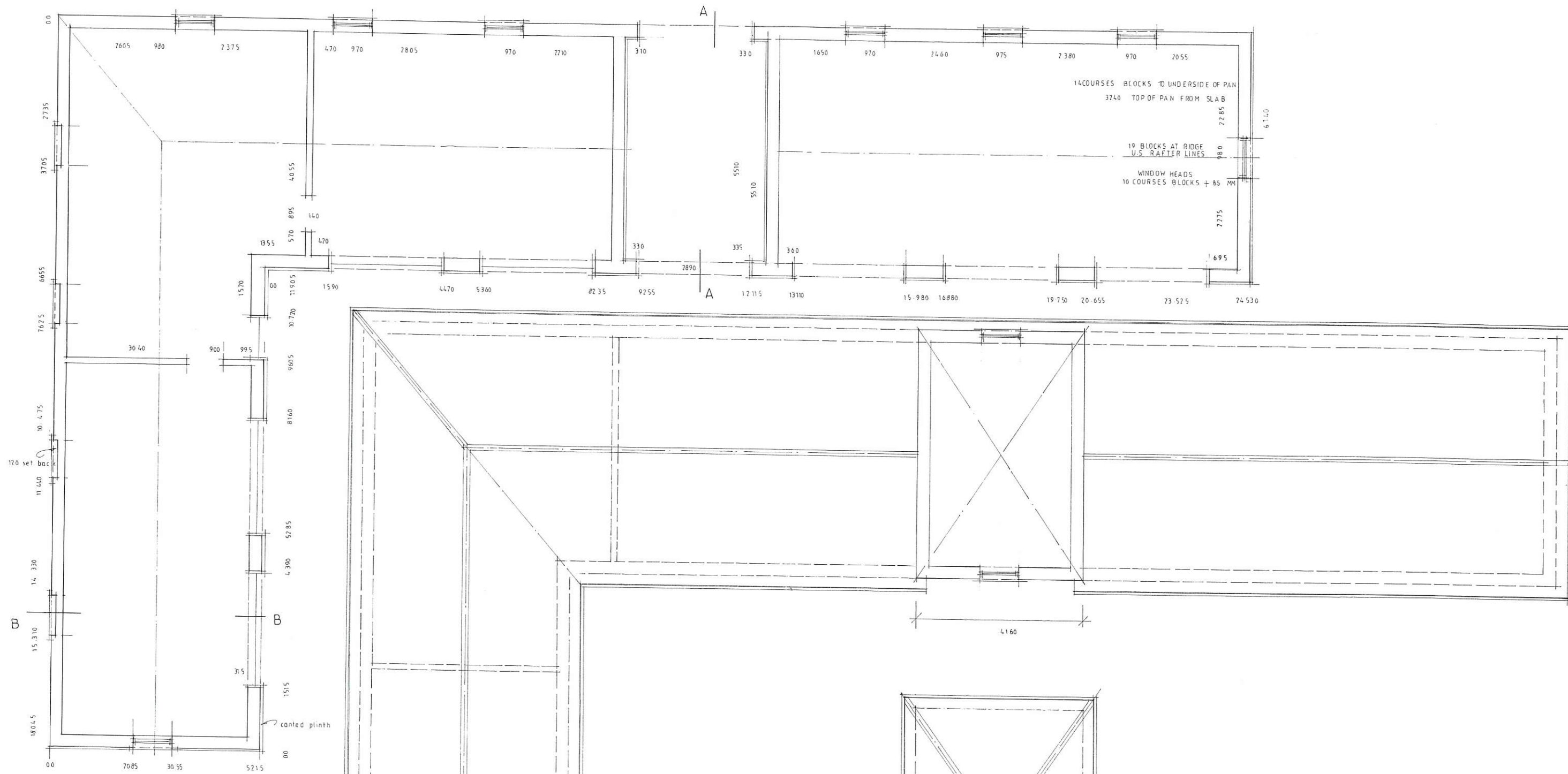
ERECTION OF BUILDING FOR USE AS STABLES AND GROUNDS MAINTENANCE STORE
AND CHANGE OF USE OF AGRICULTURAL LAND FOR KEEPING OF HORSES



WEST ELEVATION

scales 1:50 at A1 1:100 at A3





GROUND FLOOR PLAN

P&ER
DEVELOPMENT CONTROL
REC'D 15 DEC 2018
CHEQUE ENCLOSED

FIRST FLOOR - ROOF PLAN.

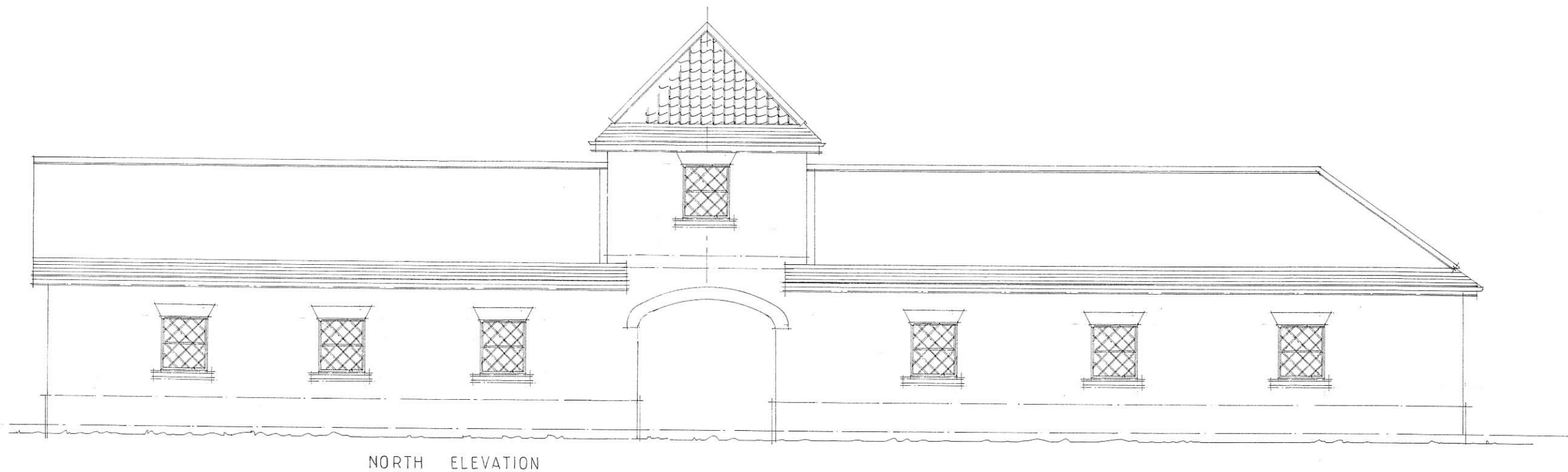
HIGHER ROOF PLAN

ERECTION OF BUILDING FOR USE AS STABLES AND GROUNDS MAINTENANCE STORE
AND CHANGE OF USE OF AGRICULTURAL LAND FOR KEEPING OF HORSES

scales 1:50 at A1 1:100 at A3 0 1 2 3 4 5 6 7 8 9 10m

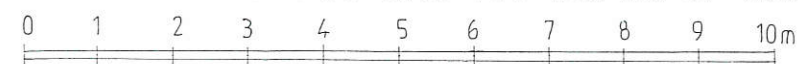
L 242 variation 1 a x

P & ER
DEVELOPMENT CONTROL
REC'D 15 DEC 2016
CHEQUE ENCLOSED

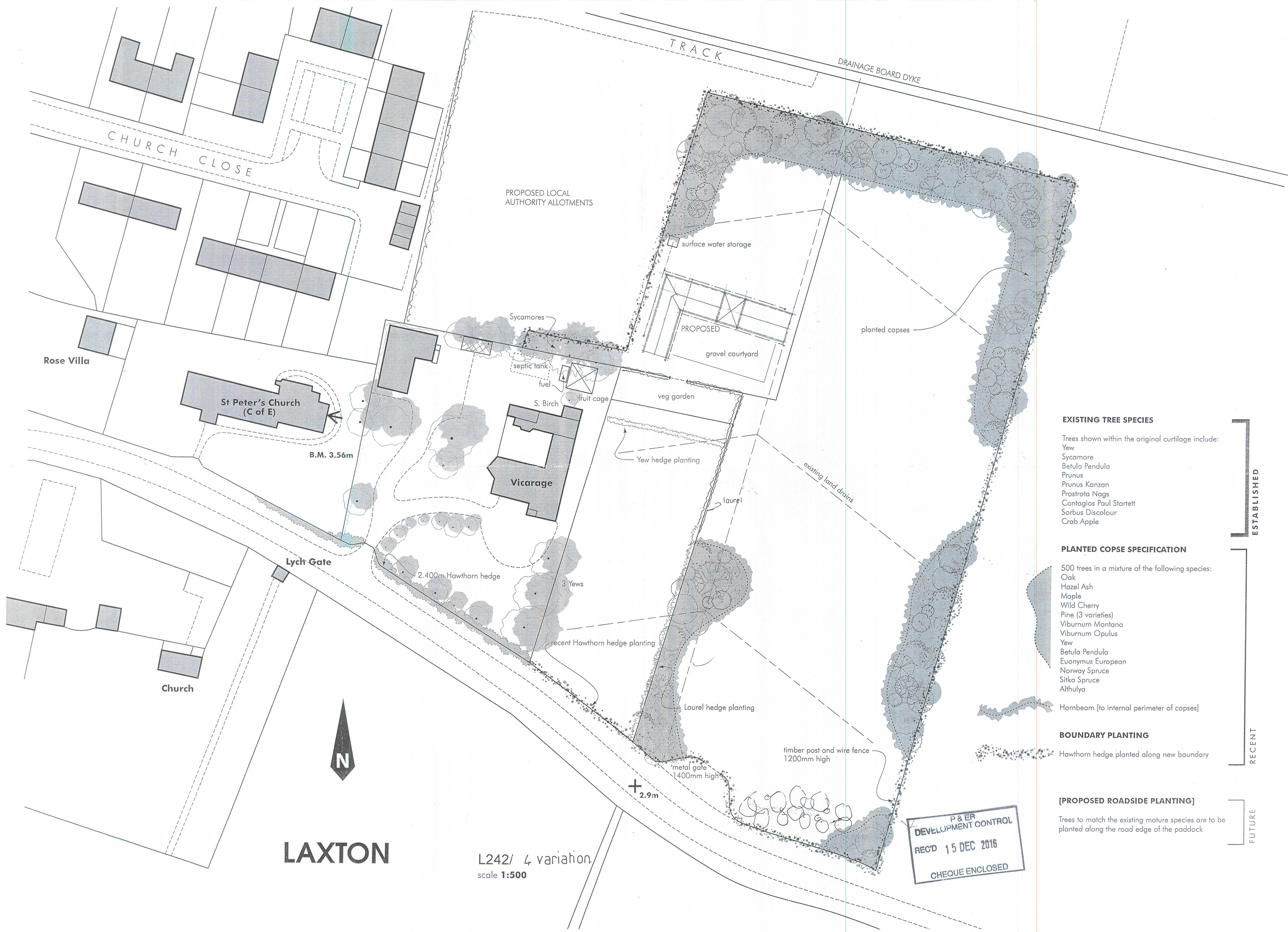


ERECTION OF BUILDING FOR USE AS STABLES AND GROUNDS MAINTENANCE STORE AND CHANGE OF USE OF AGRICULTURAL LAND FOR KEEPING OF HORSES

scales 1:50 at A1 1:100 at A3



L 242 variation 2 a X



- EXISTING TREE SPECIES**
- Trees shown within the original curtilage include:
- Yew
 - Sycamore
 - Betula Pendula
 - Prunus
 - Prunus Kanzan
 - Prostrata Nags
 - Contagios Paul Startett
 - Sorbus Discolour
 - Crab Apple

- PLANTED COPSE SPECIFICATION**
- 500 trees in a mixture of the following species:
- Oak
 - Hazel Ash
 - Maple
 - Wild Cherry
 - Pine (3 varieties)
 - Viburnum Montana
 - Viburnum Opulus
 - Yew
 - Betula Pendula
 - Euonymus European
 - Norway Spruce
 - Sitka Spruce
 - Althulya
- Hornbeam [to internal perimeter of copses]

- BOUNDARY PLANTING**
- Hawthorn hedge planted along new boundary

- [PROPOSED ROADSIDE PLANTING]**
- Trees to match the existing mature species are to be planted along the road edge of the paddock

ESTABLISHED

RECENT

FUTURE

P & E
DEVELOPMENT CONTROL
REC'D 15 DEC 2016
CHEQUE ENCLOSED

LAXTON

L242/ 4 variation
scale 1:500

WELCOME TO LAXTON

On behalf of Laxton Parish Council and all our residents, I am delighted to welcome you to our Parish. Laxton is a wonderful place to live, rich in character and history, and I'm sure you will be very happy in your new home. This leaflet has a little information that I hope you might find helpful.

Sue Yarrow, Chair of Laxton Parish Council

The Bricklayers Arms

The Bricklayers Arms is our traditional local Inn, serving the best of British meals, with open fires, friendly staff and a warm welcome.

It's open 5pm till late on Tuesdays to Fridays, 1pm till late on Saturdays and 12pm till late on Sundays. Food is served Thursdays to Sundays. Thursday



night is home made pie night. Traditional Sunday lunches are served with four joints and homemade Yorkshire Puddings. Call 01430 432029 for bookings.

St Peter's Church

St. Peter is a lovely village church set at the heart of the Parish. Morning Prayer with Hymns is at 11am on the first and third Sunday of the month. Holy



Eucharist is on the second and fourth Sunday at 11am. Church Warden Jane Thompson can be contacted on 430343. The Rocky Club is a lively children's club that meets at the Church ever second Tuesday, 6pm—7pm. Contact Jane Barner for more information on 432737.

Activities at the Village Hall

Laxton Victory Hall was originally an old army hut and was given to the community by the Saltmarshe Family in 1919. Over the years it has been modernised and extended, yet it maintains its



original features. Regular activities include Hatha Yoga on Monday evenings, Women's Institute meetings every month and Stay and Play toddlers group every other Friday. It is available for hire for meetings, parties and events. Claire Neal on 01430 236 012 or email bookingslaxton@gmail.com.

Origin of Laxton

Laxton was first mentioned 1086 in the Domesday book. The name probably means Lax's farm but it is often believed to be connected with the word 'lax' which means salmon. There were salmon in the nearby River Ouse.

Community Defibrillator

Our community defibrillators are on the walls of the Bricklayers Arms, Laxton and Sowbys Farm, Saltmarshe. In a cardiac emergency, call 999. The operator will give you the code to the cabinet. The device is automated and will tell you exactly what you need to do.



WELCOME TO LAXTON

LAXTON PARISH COUNCIL

Get in touch with your Parish Councillors if you have anything you need to raise about life in the Village, or come along to one of our meetings on the fourth Tuesday of every Month — you will find details on the Village Hall noticeboard or our website.

- Councillor Sue Yarrow (Chair) - 431009
- Councillor John Bray (Deputy Chair)- 430505
- Councillor Win Collins - 432664
- Councillor Gillian Moore - 430946
- Councillor Gareth Newton - 430436
- Councillor Sue Sweeting— 431819
- Clerk— Alan Bravey—01482 662292

Did you Know?

In 1086 Laxton consisted of only one carucate of land (about 120-150 acres) while neighbouring Saltmarshe was six carucates. Sometime in the 12th century a large drainage ditch was dug by John le Clerk of Metham and Laxton prospered from the better drainage it brought. In 1823 Laxton the population of Laxton was 268. Occupations included seven farmers, two carpenters, a corn miller, a tailor, a shopkeeper, a shoemaker, a school-master and public house landlords.

Convenience Store

There is a convenience store on Scalby Lane, Gilberdyke and a number of supermarkets in Howden and Goole.



Find us on
facebook.

www.laxtonpc.co.uk, laxtonpc@btinternet.com

Laxton Allotments

Laxton Parish Council has 12 allotment plots that can be leased as a whole or half a

plot. There is half a plot free to lease - ideal for the a first time gardener or for someone looking for a smaller commitment. Why not come and give ot a go?



For enquiries, or to go on the waiting list for a larger plot, please call the clerk on 01482 662292?

Other Useful Information

- For a stunning wedding of events venue, use Saltmarshe Hall, 434920.
- Saltmarshe Hall services Sunday lunches and special menus, such as for Valentines Day.
- Friends or relatives coming to stay? Try the luxury Apple Tree Cottages in Saltmarshe—call 430 677
- Our bin collection days are Green (general waste) / Blue (recycling) on alternative Tuesdays and Brown - (food and garden waste) every other Thursday.
- Our nearest library is at 13 Market Place, Howden, DN14 7BJ
- Call East Riding of Yorkshire Council on 01482 393939 for access to schools and other Council services
- Call 101 for details of the doctors in Gilberdyke, Howden or Goole.
- Call 03457 48 49 50 for train times from Saltmarshe Station

Laxton Parish Council

Accounts for Payment

October 2016

Payee	Details	Total	VAT
Alan Bravey	Salary - January	86.85	0
Post Office	PAYE - January	57.60	0
East Riding of Yorkshire Council	Street Lighting SLA	299.66	49.94
Etton Parish Council	SLCC Subscription	38.50	0
Total		482.61	3.04