

LAXTON PARISH COUNCIL

24 November 2015

PRESENT: Councillors Yarrow (in the Chair), Bray, Collins, Newton and Sweeting.

Clerk: Alan Bravey

Apologies for absence were submitted by Councillor Moore.

The Parish Council met at Victory Hall, Laxton.

179/15 **MINUTES – Resolved** - That the minutes of the meeting of the Council held on 27th October 2015 should be confirmed as a correct record and signed by the Chair.

180/15 **DECLARATIONS OF PECUNIARY AND NON-PECUNIARY INTERESTS** – There were no declarations.

181/15 **COUNCILLOR CO-OPTION - Resolved** - To defer this agenda item until the next meeting.

182/15 **CLERK UPDATE**– It was reported that Clerk was working with HWRCC to prepare an Awards for All Lottery Grant in support of the Community Led Planning process. The new noticeboard had been installed in Saltmarshe.

183/15 **PUBLIC PARTICIPATION** – There was no public participation.

186/15 **CORRESPONDENCE - Resolved** – (a) that the following correspondence should be received by the Council:

- i. BT, Regarding future of Laxton Phonebox
- ii. Humberside Police, November newsletter
- iii. Burstwick Parish Council, supplying copy of their community review report.
- iv. ERYC, Notifying of up to £1000 grant for community projects from ESH trust
- v. ERYC, Invitation to consultation event: Help Shape Rural East Riding
- vi. ERYC, Advising on superfast broadband roll out
- vii. ERYC, Advising re CCTV cameras and promoting neighbourhood watch schemes.
- viii. ERYC, Request for suggestions for Scrutiny Panel Review items.
- ix. ERYC, Request to participate in rough sleepers estimate.
- x. ERYC, Advising that the likely committee date for Old Blacksmiths Cottage was 12.01.2016.
- xi. ERYC, Consultation on Winter Maintenance

186/15 **PLANNING MATTERS – Resolved** – that the Clerk should advise East Riding of Yorkshire Council that the Parish Council's previous comments on application 15/01737/PLF The Old Smithy Front Street Laxton East Riding Of Yorkshire DN14 7TS had not changed in light of the revised description of the application.

187/15 **ALLOTMENT COMMITTEE UPDATE** - Councillor Sweeting had attended the Allotment Committee on the 19th November. It was reported that it had been a productive year for the allotment holders. Soil quality was gradually improving and the new equipment was helping to maintain the gardens. The improved drainage had brought a plot back into use. The Chairman of the Allotment Committee had re-arranged the plots to achieve maximum occupancy and there was only half a plot vacant. Allotment holders had discussed the potential for a composting area, but decided there was not sufficient room. The meeting had discussed the requirement for the Parish Council to approve future applicants and new physical structures in accordance with the tenancy agreement. The Committee recommended that the allotment fees should remain at the current level for 2016/17.

Resolved – that the allotment fees for 2016/17 should remain at the current level.

188/15 **COMMUNITY NEWSLETTER** - The draft community newsletter was discussed. It was noted that an entry had been added on satellite broadband, as the provider had shown little interest in attending an event in the village. The newsletter entry on the bonfire generated a discussion on the potential of holding a more family orientated event in future.

Resolved – that the Village Hall Committee should be invited to a future meeting to discuss options for the bonfire.

189/15 **PUBLIC TRANSPORT SURVEY**– Further to the update provided at the October meeting, it was noted that the Clerk to Blacktoft had offered to act as the community champion for the 160/162 bus route. East Riding of Yorkshire Council had encouraged the Parish Council to conduct a formal public transport survey. They had provided a template questionnaire and offered to provide printed copies.

Resolved – that the survey would be distributed with the Community Newsletter

190/15 **COMMUNITY DEFIBRILLATOR UPDATE**–The second Community Defibrillator had now been installed in Saltmarshe and the Clerk had submitted the paperwork to Community Heartbeat Trust to register both units and to request the awareness training. The Sixpenny Wood Application had been submitted and an assessor had been in touch to discuss the project.

Resolved – that the Fundraisers should be invited to participate in some publicity recognising their achievements in securing the purchase of the defibrillators.

191/15 **HIGHWAYS AND DRAINAGE** – It was noted that the over-hanging trees on Skelton Broad Lane had been reported to East Riding of Yorkshire Council. The meeting discussed issues with drains and road signs.

Resolved – (a) that the damaged road signs on Station Road and at Little Olive Corner should be reported to ERYC (b) that the condition of the drain at the end of Chapel Lane and on Jubilee Avenue should be reported to the Internal Drainage Board.

192/15 **ACCOUNTS FOR PAYMENT AND COUNCIL PRECEPT DEMAND -**

Resolved – (a) That the Council tax precept should be set at the same level as 2015/16 (b) that the following accounts should be approved for payment:

- i. Salary - November - £82.61
- ii. Post Office - PAYE - November - £55.20
- iii. RD Websters, Replacement Bulbs and Key Safe - £60.13
- iv. ERNLLCA, Clerk Training - £36
- v. KLS Electrical Contractors, Installation of Defibrillator and noticeboard at Saltmashe - £363.27
- vi. Salary - December - £83.07
- vii. Post Office - PAYE - December - £54.80

193/15 **CHANGE OF DATE FOR NEXT MEETING** – It was agreed to cancel the meeting scheduled for the 22nd December and meet again on the 26 January 2016.

SIGNED:

DATE:

Laxton Parish Council Proposed Budget 2016/7

	2015/16	2016/17
Salaries / N.I.	1654	1680
Training Budget	500	500
Postage/Stationery / Printing	220	220
Community Newsletter	0	100
Councillor Mileage & Subsidence	100	60
Insurance	250	270
Seats / Bins / Notice Boards	2200	0
Room Booking / Village Hall Rent	195	250
Grants	250	250
Emergency equipment	3000	51.16
Public Works Loan	3141.44	3141.44
Subscriptions	325.74	350
Audit	144	160
Lighting SLA	249.71	275
Election Costs	1500	0
Drainage Rates	2.33	2.33
Allotments	0	50
Community Led Plan		3002
Contingencies	335.28	0
 Total Expenditure	 14067.5	 10361.93
 Income		
Precept	6967.5	7209.93
Allotment Rent	150	150
Grant		3002
 Total Income		 10361.93

Laxton Parish Council Correspondence Record

18 November - 18 January

The Clerk will circulate correspondence when considered appropriate. If Councillors would like to see a copy of correspondence that has not be circulated, please notify the Clerk on laxtonpc@btinternet.com or 07887 533057.

Ref	Date Received	Attached?	From	Purpose of Correspondence	Additional Information	Proposed for PC Agenda?
192	27 November	N	ERYC - Adult Services	Connect to Support is a website for adults in the East Riding who need support to live independently. https://www.connecttosupport.org/s4s/WhereILive/Council?pageId=362#gsc.tab=0 ERYC asking for support in promoting the website.		Yes
193	30 November	Y	ERNLLCA	December Newsletter		Yes
194	1 December	Y	Humberside Police	December Newsletter		Yes

195	4 December	Y	ERYC	Parish News	<ul style="list-style-type: none"> - Review of winter services policy - Consultation about care charges - Chairman's Awards 2016 - Christmas markets - Grants, including Connecting Communities and the Tesco Local Community Scheme 	Yes
196	7 December	Y	Cllr Bayram / Humberside Police	Update on Community Policing in the Area		Yes
197	7 December	N	ERNLLCA	Letter regarding duty to provide pensions.		Yes - Personnel Committee
198	8 December	N	Two Ridings Community Foundation	Advising the grant fund bid of £2580 was successful..		Yes
199	9 December	N	Humberside Police	Advising that crime rate in Laxton did not warrant CCTV cameras.		Yes
200	10 December	N	ERYC	In light of request for advice on CCTV cameras, would the Parish Council like to support the formation of Neighbourhood Watch Groups?		Yes
201	Various	N	Chairman of ERYC, Conservative Group	Christmas Cards	Various	N

202	10 December	N	ERYC	<p>Neighbourhood Planning was introduced to enable Town and Parish Councils to have a greater involvement in planning for new development in their local area through the preparation of Neighbourhood Plans and Orders. Neighbourhood Plans and Orders are prepared by Town and Parish Councils with support from East Riding of Yorkshire Council.</p> <p>East Riding of Yorkshire Council has recently published a series of new topic notes to provide further guidance for Town and Parish Councils on Neighbourhood Planning. These notes are available to view on the East Riding website</p> <p>(http://www.eastriding.gov.uk/neighbourhood-planning/)</p>	<p>The Department for Communities and Local Government (DCLG) has committed to making £22.5 million available between 2015 and 2018 to support Neighbourhood Planning. Town and Parish Councils preparing a Neighbourhood Plan or Order are able to apply for a grant of up to £8,000. An expression of interest form is available and can be used to establish what type of support you could be eligible for</p> <p>(http://mycommunity.org.uk/programme/neighbourhood-planning/?a=funding).</p>	Yes
203	15 December	N	ERYC	Request for nominations to ERYC Chairman's Awards	Five award categories - Built Heritage Award, Business Award, Community Award, Environment Award, Sport Award	Yes

204	15 December	N	Blacktoft Parish Council	Blacktoft pc is interested in starting up either on its own or joining with Newport/Gilberdyke Youth Project and/or starting a youth poroject involving Laxton and Kilpin. Would Laxton PC be interested in taking part?		Yes
205	17 December	Y	Environment Agency	Humber Newsletter		Yes
206	21 December	Y	ERNLLCA	December Newsletter		Yes
207	23 December	N	ERYC	Planning Consultation for 15/03943/VAR Manor Farm Bungalow Station Road Laxton East Riding Of Yorkshire DN14 7TW - Application to Vary Planning Conditions	Plans available at: http://newplanningaccess.eastriding.gov.uk/newplanningaccess/applicationDetails.do?activeTab=summary&keyVal=NZJT6OBJIL600	
208	5 January	Y	Humberside Police	January Newsletter		Yes
209	8 January	N	ERNLLCA	Confirming award of £595.98 from the Government's transparency fund		Yes
210	8 January	N	ERYC	Parish New - January	<ul style="list-style-type: none"> - New Year bin collection date changes - YORSwitch - Chairman's Awards - a need for more blood donation in the East Riding - Crime Reduction grants - the WHAT project to address fuel poverty 	Yes
211	13 January	N	ERNLLCA	Invitation to participate in the Beacon celebrations for Her Majesty's 90 Birthday on the 21 st April		Yes

212	15 January	N	ERYC	The next meeting of the Flood Liaison Group, to be chaired by Councillor Fraser, will be held at County Hall, Cross Street, Beverley, HU17 9BA on Friday, 10 June 2016 at 10:00am. The meeting will last no more than two hours and the agenda and relevant paperwork will be sent out nearer the time.		Yes
-----	------------	---	------	---	--	-----

ERNLLCA

East Riding and Northern Lincolnshire
Local Councils Association



Newsletter

DECEMBER 2015



CHRISTMAS



It has been another very busy year for parish and town councils. Councillors and clerks should now be looking forward to a break from their duties to celebrate with family and friends. At this time, we should all concentrate on those nearest and dearest to us.

ERNLLCA wishes all our member councils a very **Merry Christmas and a Happy New Year!**

Our office will close at 5 pm on Tuesday 22nd December and re-OPEN AT 9.00AM ON MONDAY 4 JANUARY 2015.

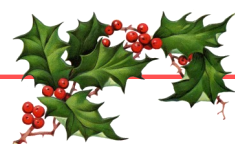
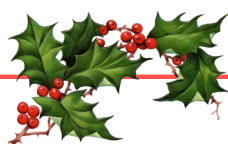
Pay award

Councils which use the National Joint Council (NJC) pay scales may be interested to know that ERNLLCA has been advised that the local government employers' organisation has made a final offer on a pay award from 1 April 2016 onwards. In summary, the offer for 2016/2017 proposes that anyone on scale point 15 (i.e. the lowest recommended grade for a Clerk) or point 16 will receive a pay rise of 1.2%; any one on scale point 17 will receive a 1.10% increase and all grades above will receive 1%.

The employers' organisation has proposed that a "two year deal" is put in place which would mean that for 2017/2018 anyone on scale point 15 would receive a 1.8% pay rise; point 16 would increase by 1.5%; point 17 would increase by 1.3%; and all grades above by 1%.

No agreement has been finalised and ERNLLCA will advise if and when that happens.

Councils which set their own salary levels for staff are not affected by the above.





Referendum principles

Councils have been advised that the Department of Communities and Local Government published confirmation on 17 December 2015 that parish and town councils will not be subject to referendum principles should their precepts increase above the percentage level set for the principal authorities. Parish and town councils can therefore agree their precepts at the levels they wish albeit that the Government has expressed its view that it expects parish and town councils to "behave responsibly and protect their taxpayers from excessive precept increases; if they fail to do so, government has the option of making them subject to the referendum principles in future". So, although this is welcome news for 2016/2017, the Government remains committed to reviewing its position on an annual basis.

Council websites

If you would like your council's website listed on ERNLLCA's site, please let us know.

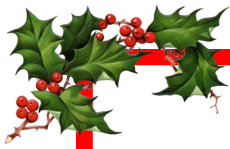
Induction session for new Clerks

In response to demand, we are re-offering our half-day induction event for new, or newish, Clerks. This latest session may also be of use to those who were not able to attend previously. There is no charge for this event.

A room has been booked at the Ropewalk in Barton, Maltkiln Road, Barton upon Humber, DN18 5JT for **Wednesday 20th January 2016** and the session will start at 9.30am and finish at 1.00pm. Tea and coffee will be available on arrival and during the session.

The session will cover a brief explanation of ERNLLCA's role; an overview of the Clerk's role; talk through the legal requirements for agendas, meeting notices and minutes; go over the Clerk's/RFO's financial responsibilities; explain the professional development opportunities for Clerks, and hopefully answer your questions! This will be a full morning but if there is anything else you would like to be included, let us know and we will try to incorporate that.

Places can only be secured by completing and returning the booking form on the training page of the new ERNLLCA website.



Extra-ordinary meetings

ERNLLCA has noticed that councils seem to be calling more and more “extra ordinary” meetings, which may be a reflection of the growing amount of business being handled by so many of our councils. It is essential that the proper process is followed in calling such meetings in order to ensure that any decisions taken are, in fact, lawfully made.

An extra-ordinary meeting of council (or a committee) is just that, an extra meeting, and one that has not been scheduled. In such circumstances the Clerk has not been given authority to summon members to the meeting therefore reliance has to be placed on the Local Government Act 1972, schedule 12, paragraph 9(1). In summary, the Chairman should sign the meeting notice, not the Clerk.

Paragraph 9(2) of the Act above also allows for an extra-ordinary meeting to be called by two members of the council (or committee) provided the Chairman has been first asked to do so but has not acted after seven days have passed.

Any extra-ordinary meeting must be called with three clear days notice, the posting of a public notice and an agenda for the meeting issued to councillors specifying the business to be transacted.

As with any meeting, minutes must be produced.

Funding for websites for small councils

So far, thirty-three small parish councils have applied for the funding available to them to help set up a website to meet the requirements of the Transparency Code. Councils with an annual turnover of less than £25,000 will be excused from the external audit regime but will have to publish certain specified information on a monthly and annual basis. Eligible councils must comply with the legal requirements and are urged to take advantage of the funding that is available. Further information is available at <http://www.nalc.gov.uk/our-work/the-transparency-fund>

2016 Conference

A date for your diary! ERNLLCA’s annual conference will be held on Friday 21 October 2016 at the Village Hotel in Hull. Some speakers have already been booked and details about the full programme will be issued in 2016.

Issued by:

ERNLLCA, Suite 8, Waters Edge Business Centre, Maltkiln Road, Barton upon Humber,

DN18 5JR

Tel: 01652 661617

Email: enquiries@ernllca.info

www.ernllca.info



Protecting Communities, Targeting Criminals, Making a Difference

Parish/Town News Release

Howdenshire Update for December 2015

1. Priority

Issue: Youths causing annoyance around the areas of the Church and playing fields in Gilberdyke.

Throughout December, officers will continue to patrol the above areas on Clementhorpe Road to deter any potential anti-social behaviour. Anyone caught engaging in anti-social behaviour will be dealt with under the FAIRWAY process jointly with East Riding of Yorkshire Council. It is unlikely that any discretion will be shown.

2. Meetings

PCSO Simon Palmer will be holding a "Police Drop In" surgery at the Travelling Library, Gilberdyke Memorial Hall car park, Clementhorpe Road, Gilberdyke on the 9th December (16:00 – 17:00 hrs).

3. Crimes in your area

- Two JCB's were stolen from the North Cave area, however both vehicles were later recovered as a result of them being fitted with tracking systems.
- 2 vehicles in North Cave have been broken into and an Iphone was stolen from one vehicle and tools from the other.
- Approx 60 -80 litres of oil were siphoned from a tank at a rural property near Holme Upon Spalding Moor.
- A business in Bubwith was broken into and tools and cash were stolen.
- Entry was gained into a secure premise and equipment stolen

4. News and Appeals

Keep your presents off the burglars list this Christmas.

Well it's that time of year again, the trees are going up, the Christmas lights are being turned on, those Christmas decorations that have been on display in most of our larger shops since the end of August now look relevant, and the same festive adverts are on the TV again and again.

Yes, Christmas is here and with it, the excitement and the frantic rushing around have begun in earnest. It's a time when everything goes up a gear. We're in a hurry; we need to do loads of things; we have so much to plan. But, if we're not careful, whilst doing all of these things, we can become careless and lose sight of those simple crime prevention measures that we practice all year.

Just as Christmas is a busy time for everyone, it can equally be a time of plenty for the opportunist thief if we let them take advantage of our rushing around. Follow these simple steps to avoid becoming a target for crime and have a crime free Christmas and New Year.



Protecting Communities, Targeting Criminals, Making a Difference

Parish/Town News Release

- When shopping – be mindful of your bags and whats inside them, try and use a bag that has a zip fastener and ensure that your purse/wallet and mobile phone are out of sight and out of easy reach of pick pockets.
- Don't leave any shopping bags or other items on view in your car, always ensure that they are out of view by placing them in the car boot.
- Always try and park in a well lit car park or street and check that your car is secure!
- Consider your home security too - don't leave the curtains open and all your presents and Christmas tree on display whilst you're out. Leave a radio on, use timer lights to ensure that it looks like that someone is at home and ensure your house is secure by making sure that your garage door, house doors and windows are all locked.

Don't give a thief an early Christmas present at your expense!

EAST RIDING PARISH NEWS

Keeping you up-to-date with news about your area

Issue 91 : **December 2015**



Review of winter services policy

Information about this 3-yearly review, due to be reported in July 2016, has recently been sent to clerks of town and parish councils to ask for comments. East Riding of Yorkshire Council allocates the highways it treats into one of three network types : precautionary, secondary and most heavily-used footways.

The network is defined using approved criteria and no major changes are anticipated, so the winter services team is not looking to make additions. They are asking for comments about the service in general, potential service improvements and views on how third parties can help if the weather becomes particularly bad.

You can find details of how the winter services team deliver winter services on the website at eastriding.gov.uk/winter - click on the link for 'Road and footpath salting' to see the treated network.

You can send any comments to Lester Burton at lester.burton@eastriding.gov.uk by Friday, 18 December. You can also post them to Lester Burton, East Riding of Yorkshire Council, Beverley Depot, Annie Reed Road, Beverley HU17 0LF

Christmas bin collections

Collection dates across the East Riding for green, blue and brown bins will change over the Christmas period between Friday, 25 December and Sunday, 17 January. Collection dates will return to normal on Monday, 18 January.

Revised collection dates are available at bins.eastriding.gov.uk. New bin collection calendars will be posted soon, showing the revised dates and all dates up to Saturday, 24 December 2016. You can also sign up to the council's free text reminder service – information is on the calendar and on the website.

Household waste and recycling sites will be open from 10am to 5pm, but will close at 4pm on Christmas Eve and New Year's Eve. They will be closed on Christmas Day, Boxing Day and New Year's Day.

Real Christmas trees can be recycled in the brown bin - remove all lights and decorations. Food waste including cooked and uncooked food, carcasses, bones, fruit and vegetable peelings should also go into kitchen caddies and the brown bin. Cards, wrapping paper and cardboard boxes can be put in the blue bin.

Neighbourhood planning

East Riding of Yorkshire Council has recently published a series of new topic notes that provide further guidance on neighbourhood planning.

The notes include a step by-step guide to preparing Plans and Orders, guidance on community consultation and engagement and information on the grant funding available to town and parish councils.

There is more information on the East Riding website at eastriding.gov.uk/neighbourhood-planning

If you would like more information on neighbourhood planning, or would like to discuss neighbourhood planning in your area, contact the forward planning team at forward.planning@eastriding.gov.uk or call (01482) 391738.

Tesco local community scheme

Very few bids have been received from this area for this scheme which can pay for projects to improve local green spaces. Projects will include building new pocket parks, sports facilities, woodland walks and community gardens. The nomination form is at groundwork.org.uk/sites/tescocommunityscheme



EAST RIDING
OF YORKSHIRE COUNCIL

Would you like something scrutinising?

East Riding of Yorkshire Council's overview and scrutiny committees want to hear from members of the public who would like to put forward topics to discuss.

There are five overview and scrutiny committees. They consider a wide variety of topics covered by the Council and its partners, including Humberside Police, Humberside Fire and Rescue Service and local NHS.

This year they have looked at school buildings, school funding, potholes, controlled parking zones, special expenses, council assets, local drug trends, maternity services, cancer services, road safety and sheltered housing.

The committees can produce recommendations and reports offering advice on policies, budgets and service delivery. They focus on issues affecting residents and visitors to the East Riding and can also make recommendations to partner organisations.

Scrutiny committees are not forums for receiving complaints and cannot get involved in planning application issues.

If you would like to put forward a suggestion, email scrutiny@eastriding.gov.uk or telephone (01482) 393204. The deadline for submitting ideas is Friday, 8 January.



Chairman's Awards 2016

Town and parish councils are being encouraged to make nominations for the 2016 East Riding of Yorkshire Council's Chairman's Awards. The annual awards, presented at a ceremony at The Spa Bridlington in May, are given to individuals, businesses and projects that have helped improve the East Riding in the past year.

Everyone is encouraged to nominate deserving people, organisations or projects and to also tell family, friends and neighbours about the awards.

The awards are in five categories:

- community – recognises groups and individuals for their contribution to improving lives of those living in the East Riding with a non-commercial project
- built heritage – celebrates private homes or business premises that have been sympathetically renovated and restored
- environment – recognises projects that have made an impact in the environment
- business – recognises businesses that have helped the economy flourish
- sport – celebrates local talent and commitment to sports clubs and activities.

Nominations can be made at eastriding.gov.uk/chairmansawards or emailed to chairmans.award@eastriding.gov.uk. Or call Sarah Asquith, civic officer, on (01482) 393260. The closing date for nominations is Saturday, 31 January.

Consultation about charging for social care

The Care Act 2014, which came into effect on 1 April, requires councils across the country to have a new charging policy in place by April 2016. A series of events have been held in the East Riding in November to help residents find out more about charges for services. The final event will be held on Tuesday, 8 December, 5-8pm at Beverley Memorial Hall.

All East Riding residents, including adults with social care needs and carers, are being encouraged to take part in the consultation by completing a questionnaire. Copies have already been sent to service users, registered carers, and service providers. The nine-week consultation ends on Monday, 4 January.

You can ask for a hard copy of the questionnaire by calling (01482) 393939, or pick one up from your local library. There is more information and the questionnaire at eastriding.gov.uk – click on the link in the 'Have your say' banner at the top of the page.





Christmas bake-off winners

Tasty festive dishes were cooked up by the finalists in this year's Christmas bake-off competition. East Riding residents came up with mouth-watering original recipes using Christmas leftovers to highlight how easy it is to save money by creating great meals from food some people might throw in the bin.

The six finalists made everything from a seasonal pizza to fruit cakes and flapjacks, and cooked their recipes at the Yorkshire Wolds Cookery School at Southburn, near Driffield. The dishes were tasted and judged by Michelin-starred chef James Mackenzie of the Pipe and Glass Inn at South Dalton, who was impressed by the standard. You can download the finalists' recipes by typing "Christmas bake off" into the Search box at eastriding.gov.uk

The two winners, who received £100 vouchers for the Pipe and Glass Inn, were:

- age group 11-16: Jonathan Sreeves, who created a Boxing Day Veggie Tatin using leftover cooked root vegetables including potatoes, carrots and parsnips and spices on a crispy puff pastry base
- age group 17 and over: Robert Bell with his recipe of Crispy Christmas balls, which used cold mashed potato, cold cheese sauce, and crumbs from stale bread mixed with smoked haddock.

Christmas fire safety

Humberside Fire and Rescue Service is urging residents to put fire safety at the top of their Christmas lists this year. While fire safety is important throughout the year, the extra distractions of the Christmas season make it especially important to be vigilant so that families and loved ones are protected from fire.

Seasonal tips include:

- don't overload sockets, and ensure only one plug per socket
- switch off fairy lights and unplug them before going to bed, or going out
- check your Christmas tree lights are in good working order before use, and conform to the British Standard (BS EN 60598)
- use residual current devices (RCDs) on outdoor electrical equipment
- turn off plugs when they are not in use, except those designed to be left on like freezers
- do something good this Christmas by testing the smoke alarms of someone you know who may need help such as an older relative or neighbour.

You can watch the short Fire Kills Christmas Tree video at:

<http://youtu.be/hMtjGfr0tYs>

Connecting communities grant

This grant is a partnership between the council and East Riding Clinical Commissioning Group. It is open to local organisations, and voluntary and community groups who want to develop community based activities for older people aged over-50.

The panel will consider funding projects and activities for older people which encourage participation, improved physical and mental wellbeing, reduced isolation and loneliness.

To discuss a potential project contact Jane Collinson at jane.collinson@eastriding.gov.uk or call (01482) 392233.

Healthwatch needs you

Healthwatch East Riding of Yorkshire is the independent consumer champion for local health and social care, working to help local people get the best out of their health and care services.

It wants to recruit people for exciting volunteering opportunities such as publicity, surveys, youth mentoring and visiting services to speak to patients and service users.

To find out more, call (01482) 665684, or email enquiries@healthwatcheastridingofyorkshire.co.uk



Prowdes charity

Prowdes Educational Foundation's fund is open to boys and young men up to the age of 25 living in East Yorkshire (and also North Yorkshire and Somerset).

One-off grants are given for educational purposes in the widest sense. This includes: fees, books, uniforms, other school clothing, equipment, instruments, postgraduates, study or travel abroad. The average grant is £450.

If you know of any young men you think need some support, contact Cllr Pat Smith, a local trustee, at councillor.smith@eastriding.gov.uk

West Wolds Radio

This local radio station is due to start broadcasting on 103.1 FM and online from Sunday, 29 November.

It is keen to book guests for the daily output and is inviting local groups to make contact and book in to enjoy some free publicity on Britain's newest radio station. Contact Tony Barker at news@westwoldsradio.co.uk or call (01759) 291031.

Stay well this winter

Stay well this winter by having your flu jab, knowing where to get medical treatment and keeping warm. You can find out more at staywellthiswinter.co.uk



Christmas markets

East Riding's markets will be full of festive spirit this Christmas. Traders in Beverley, Bridlington, Driffield, Pocklington and Cottingham will be celebrating the holidays by holding special events and decking their stalls to get shoppers in the seasonal mood. Beverley and Bridlington's markets are held on Wednesdays and Saturdays, Pocklington's on Tuesdays, and Driffield and Cottingham on Thursdays.

At Bridlington, the Coca Cola Truck will visit the market in King Street on Saturday, 12 December from noon-8pm to deliver some festive cheer. Families and friends will have the chance to take pictures with the truck as it switches on its spectacular lights, experience a snowy winter wonderland setting, and some free drinks.

Beverley's market on Saturday, 12 December will include a best-dressed stall competition to pay special tribute to a former stallholder. Traders are being encouraged to give their stalls a festive make-over and the winner will be presented with a cup named after Allan Gorbett, one of the market's longest-running stallholders, who died in September.

On Saturday, 19 December a traditional steam organ will be at Beverley market. Then on Thursday, 24 December there will be a special Beverley Christmas Eve market from 9am-2pm. This final market of the year will give shoppers a last-minute chance to buy presents, food and drink.

Here are some other community events in the Christmas season.

Monday, 7 December		Bridlington	Garrison Square: a free-to-use ice rink for those that want to skate. Runs till Sunday, 13 December
Thursday, 10 December	2.30 & 7.30pm	East Riding Theatre, Beverley	Oliver Twist: a dark and truthful portrait of Dickens' novel, packed full of music, singing and dancing. Runs till Saturday, 2 January
Friday, 11 December	10am-5pm	Beverley	Beverley Minster: Christmas tree festival, Runs till Sunday, 13 December
Sunday 13 December	All day	Beverley	Town centre: Beverley Festival of Christmas. See beverleyfestivalofchristmas.co.uk
Monday, 14 December	6pm	Barmston	Pond in Sands Lane: Christmas tree lights switch-on with carol singing, visit by Father Christmas, and mince pies
	7pm	Bridlington	The Spa Bridlington: Lions Christmas Concert
Thursday, 17 December	7.30pm	Wansford	Village Hall: Christmas concert
Saturday, 19 December	7.30pm	Beverley	St. Mary's Church: Carols by Candlelight
Monday, 21 December	6.30pm	Swanland	At the pond: Father Christmas boats around the pond. Also a roundabout, stands, carols and refreshments





MAKING A
DIFFERENCE

NOT PROTECTIVELY MARKED



SHAPING THE FUTURE

Insp 5685 Jo York
Communities Command
Humberside Police

7 December 2015

Dear Councillor

Community policing in your area

As the Police Inspector for your area I want to take this opportunity to provide you with an update about how we are developing and improving our policing services locally. Neighbourhood policing remains the cornerstone of how we police in our communities and we value greatly the support and relationships we have with local people.

We cannot police in isolation but need the help of the public in order to keep our communities safe from harm.

We have looked closely at where our community teams are located to ensure we have the correct numbers of people where and when we need them most. As a result, our Community Policing Teams now work from 20 locations across the force area, within the heart of the communities they serve.

In Howdenshire ward the community policing team will be located at Goole. The Community Beat Manager for your ward is PC 1650 Tim Morton , who can be contacted on **07855139001**. Your Community PCSOs are PCSO 7847 Simon Palmer and PCSO 7668 Bill Mell, who can be contacted on **07966874193** and **07855139509** respectively.

Community Policing Officers and PCSOs will remain dedicated to your local area, a recognisable face, and will now be free from other tasks so they can concentrate on tackling local priorities and dealing with local issues. They will be out and about working with local people on the issues that matter to them, supported by our Special Constables, who give their time freely.

Our Community Patrol Officers will respond to incidents across the force area, equipped with mobile devices so they spend less time returning to police buildings.

This is good news for our communities as it will enable us to have flexibility where we need it to respond to emergencies, yet still be able to provide a local service in our



MAKING A
DIFFERENCE

NOT PROTECTIVELY MARKED



SHAPING THE FUTURE

neighbourhoods. It will also help us to work better with our partners to identify effective solutions to problems.

Public safety remains our absolute priority and these changes will ensure that we are able to consistently and effectively identify and resolve local problems, reduce crime and anti-social behavior, and improve the safety of our communities.

In order to ensure we have the right number of people in the right places when we need them most, we have discussed with officers and staff a new shift pattern. In an attempt to take account of individual preferences some people have moved locations so you may well see some new faces in your area. I am sure they will get to know you quickly and you should have the confidence to contact us and know we will respond to your needs.

Community Officers will start their new roles on December 7, 2015 and our new shift pattern will start in February next year. If you have any questions about your area, please do not hesitate to contact me on **01482 630652** or **07816 448575** or at Joanne.York@humberside.pnn.police.uk

Yours sincerely

JE York

Inspector 5685 Jo York

www.gov.uk/environment-agency

users which is the first time that flood warnings will be issued directly through a mobile phone provider. Mobile users with EE have now been registered for our free flood warning service where the billing address falls into a known area of flood risk from rivers – this will cover over 75,000 people across the Humber, Yorkshire and Lincolnshire area.

North bank

Reedness:

The 3.3 kilometres of flood defence between Swinefleet and Reedness have now been raised to provide improved flood protection in the Reedness area, following the December 2013 tidal surge. Modelling is now being undertaken to update national flood maps with the increased level of protection. We have supplied residents with letters to indicate the flood defences are complete to support them in their discussions with insurers. If residents require a letter to support with insurance queries they should contact neyorkshire@environment-agency.gov.uk with their contact details.

Works to stabilise Reedness Drainage channel, to ensure continuously safe land drainage in to the River Ouse, are now also complete.

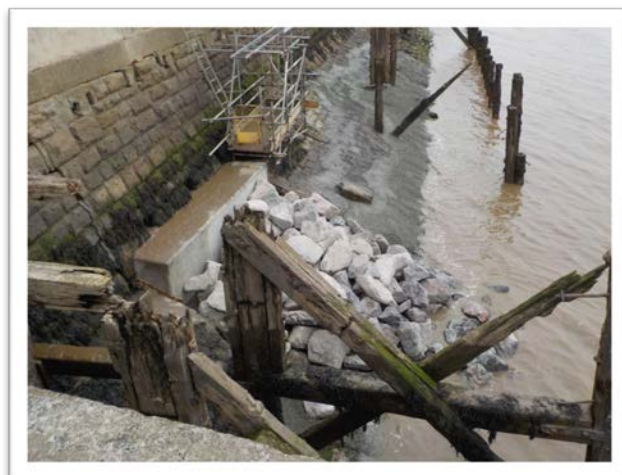
Albert Dock:

During the tidal surge in December 2013, the Humber Estuary overtopped the dock side at Albert Dock in Hull, flooding 300 properties. Construction of 1.6km of permanent walls started in November 2014 to replace the temporary defence installed after the flooding and these walls were completed in July 2015.

Sealing up of Dunston Culvert (a redundant Yorkshire Water drain) was completed in September and the Trans Pennine Trail was re-opened at the end of October. An Albert Dock flood defence completion event was held on 1 December 2015. All that now remains is for a small amount of drainage and reinstatement works to be finished expected by the end of December.



Dunston Culvert before



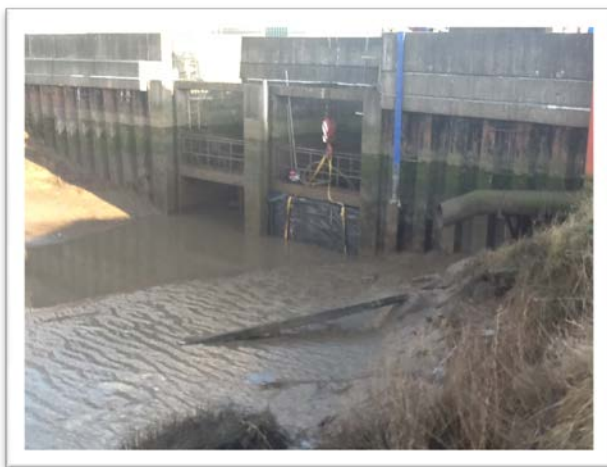
Dunston Culvert completed works

Burstwick New Clough:

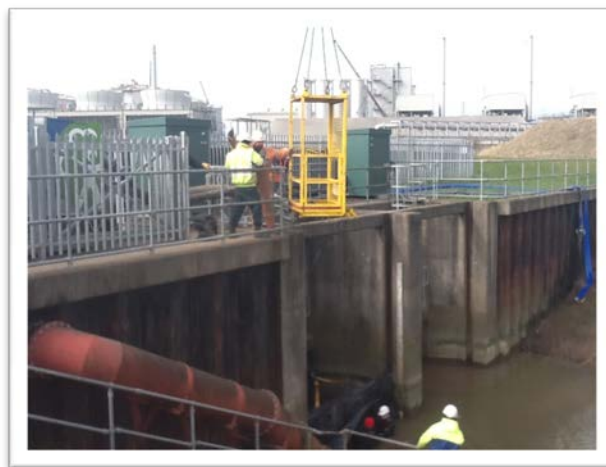
After repeated repairs over a number of years the flood gates at Burstwick New Clough had become beyond economical repair and required replacement to continue to provide appropriate levels of flood defence to Hedon and the Burstwick Drain Catchment.

Contractors have been employed to determine the size and specification of the doors and any other work required. The outfall culverts were dammed off to facilitate the assessment of works required. Once completed the dams were removed.

The doors have been designed and are currently being manufactured, Weather permitting, work on site is expected to start in January 2016 and completed by March 2016.



Bustwick New Clough Flood Gates



Assessment of works at Bustwick New Clough

Paull Holme Strays:

The embankment at Paull Holme Strays (PHS) was originally constructed in 2003. PHS is located on the north bank of the Humber Estuary in East Yorkshire, east of Hull. This flood defence embankment extends from Paull Point Battery to Holme Hill. Following the tidal surge both cracking and settlement have been highlighted as an issue. Site investigation works are underway and will be completed by the end of December. There will be a period of monitoring that will take place before the results are collated and the design completed in the spring. Construction works are due to commence onsite in the summer of 2016.

Chantry Cottages:

We let a contract for the permanent works at Chantry Cottages to JBA-Bentley under the WEM framework last month, and the site was re-established at the end of November. Access points are being established with construction works due to start in the new-year. It is anticipated that site works will be completed in spring 2017.

Hull and Holderness Flood Alleviation Scheme:

East Riding of Yorkshire Council is leading on the HaHFAS project, which is looking to develop a strategic approach to the management of flood risk covering a large area to the east of Hull. The study is looking at the potential for implementing flood alleviation measures including tidal defences at Paull, as well as inland works to reduce flood risk from the Old Fleet Drain, Preston New Drain, Burstwick Drain, Thorngumbald Drain and part of the Keyingham Drain.

The focus of this work is currently on Paull Tidal defences, where work to protect more than 600 properties is due to start in the new year with the installation of a glass wall to increase the height of the current defences along the frontage. The Inland works are programmed for delivery between 2018 and 2022, with more than 2,000 properties expected to benefit.

Hull River Defences Package:

We are planning on improving the river defences through the city of Hull, so that they continue to provide long term protection from the risk of flooding from the River Hull. We are working in partnership with Hull City Council to seek funding opportunities with the aim of providing a scheme which will contribute towards growth and regeneration on the river front in the city.

The appraisal of the flood risk options is now complete and a business case will be submitted by the end of December. We have identified a WEM Lot4 supplier to carry out the construction work and will be awarding a contract once the business case is approved early in the new-year.

South bank

South Ferriby: Site surveys for the planned refurbishment of the tidal doors at Ferriby Sluice, West Drain and East Drain are now complete and we are looking to procure the specialised timber, ready to start manufacture. Expected installation is summer 2016 dependent on weather.

We are continuing to progress the scheme to improve approximately 2km of tidal flood banks at South Ferriby. We have carried out environmental surveys alongside North Lincolnshire Council and site investigations are being planned along the existing flood embankment. We are on programme to complete construction in 2019. To ensure the scheme we deliver is the best it can be for the local area we need to do more detailed work upfront and that will take more time to plan. We will continue discussions with beneficiaries on future contributions. Changes in programmes are always possible, but we are committed to delivering the best scheme we can for South Ferriby and Winteringham Ings.

Winteringham: Our Operations teams are coordinating improvements around Winteringham Haven, including raising low spots in the flood banks and desilting the Beck. Detailed investigations at the outfall structure were completed earlier in the year. Plans are being discussed and any necessary improvements are expected to start in 2016, once funding has been secured.

Barrow Haven: Work to the retaining walls on the east side of the river is now completed. The new tidal doors have now been installed. Please see photos below.



New tidal doors



New tidal doors installed

Barton to New Holland: Progress is continuing on the initial economic assessment for a scheme to improve the tidal defences between Barton and New Holland. We have been allocated government funding, however a business case needs to be produced and significant local contributions secured before any preferred solution can be built. We are looking at the possibilities of enhancing and securing important local wildlife habitats as part of the scheme.

Port of Immingham: We continue to work closely with both North East Lincolnshire Council (NELC) and Associated British Ports (ABP) to develop a scheme to reduce the risk of flooding to the port, national infrastructure and adjacent community. NELC are leading the project and have appointed Capita-Aecom, an engineering consultant to develop a business case for completion in spring 2016, with a view to replace the

port's tidal lock doors later in the year. NELC's Project Manager is also exploring other funding possibilities through the Greater Lincolnshire and Humber Local Enterprise Partnerships and EU funding streams looking for opportunities to contribute to accelerating the delivery a future phase of the scheme.

Killingholme Marshes: We are developing a small scheme to stabilise a short section of flood defence near to Killingholme Haven. We expect that this work to start in spring 2016 after the wintering birds have flown.

Cleethorpes North Terminal Groyne: The £750k scheme, being managed by North East Lincolnshire Council, will replace the existing groyne structure that maintains the amenity beach level and reduces the risk of flooding along the North Promenade and properties within the north end of the town. The council have commissioned consultants to progress the design. Construction on site is expected to commence in spring 2016.

Burringham: After a summer of investment and engineering work, the majority of the new flood defence in Burringham has bedded in and is providing the protection for the community. Huge metal piles were driven into the ground to provide a strong defence against flooding, and the final piece of work is to let the few remaining tiny gaps fill naturally. Over time the puddles seen behind the defence will disappear but currently during high tides we are still experiencing some minor seepage. The seepage is not a flood risk, and at most is likely to cause some inconvenience to those walking on the path or some puddles in the road. As it is taking longer to settle than expected and the weather is getting colder, we're planning a short term plan. This will be placing sandbags next to the path and paint areas that have not yet been exposed to the tide with a waterproof product until the tiny gaps at that level have naturally sealed.

Are you prepared for future floods?

Although flood defences reduce the likelihood of flooding, the risk can never be removed entirely. Flooding can happen at any time and we advise people to take simple practical steps to help reduce the impact of flooding to their homes or business.

- Make sure you are registered to our free flood warning service, Floodline.
- Get the most out of the service by registering the maximum 5 ways to receive flood warnings. Use a combination of mobile phone numbers, landlines and email addresses. Make sure your contact details are accurate - if you've moved house, changed mobile phone number or got a different email address, please let us know. Don't risk not getting the message. Check your registered details by calling Floodline on 0345 988 1188. To make a flood plan for your home call Floodline or visit www.gov.uk/floodsdestroy

Contact

If you have any questions, please contact our national customer contact team on 03708 506 506 (landlines are charged the same as a local geographic call but mobiles may vary) or email enquiries@environment-agency.gov.uk. Alternatively, visit www.gov.uk/flood or call Floodline on 0845 9881188 or 0345 9881188. Follow us on Twitter [@EnvAgencyAnglia](https://twitter.com/EnvAgencyAnglia), [@EnvAgencyYNE](https://twitter.com/EnvAgencyYNE) or [@LincsOpsEA](https://twitter.com/LincsOpsEA)

Newsletter

November 2015

Executive Committee membership

The ERNLLCA Executive Committee is now back up to full strength and the composition is as follows:

Representing the East Riding (North East) District Committee: Councillor T. Cooper (Drifffield Town Council) and Councillor Naizby Noble (Langtoft Parish Council);

Representing the East Riding (Holderness) District Committee: Councillor R. Simpson (Keyingham Parish Council) and Councillor G. Thurston (Hedon Town Council);

Representing the East Riding (Central) District Committee: Councillor T. Galbraith (Elloughton cum Brough Town Council) and Councillor T. Kelly (South Cave Parish Council);

Representing the East Riding (West) District Committee: Councillor C. Kealey (Stamford Bridge Parish Council) and Councillor S Lane (Catton Parish Council);

North Lincolnshire District Committee: Councillor D. Knowles (Haxey Parish Council); Councillor B. Brooks (Hibaldstow Parish Council); Councillor D. Wells (Kirmington & Croxton Parish Council); and Councillor D. Whiteley (Bottesford Town Council);

North East Lincolnshire District Committee: Councillor M. Archer (Waltham Parish Council) and Councillor D. Hasthorpe (Healing Parish Council).

All appointments are normally made at the July round of district committee meetings.

The President, Mr T. Glossop and Vice-President Councillor R. Breed (New Waltham Parish Council) are ex officio members of the Executive Committee. Councillors T. Cooper and G. Thurston are, in addition to being district committee representatives, also Vice-Presidents. These positions are appointed by the Annual General Meeting

Disruptive behaviour at meetings

From time to time some councils experience problems with disruptive behaviour at meetings, which may be caused by councillors, the public or even officers! The purpose of a council, or a committee, meeting is to make decisions out of matters which have been specified on the agenda. It follows that disruptive behaviour will inhibit the ability of a council to make decisions if business is being interrupted.

Councils, and committee meetings, have the power to exclude anyone whose behaviour is such that business is being interrupted. It is important to bear in mind that councils should not rush to exclude anyone who may simply feel passionately about an issue. There are no specific rules about how such behaviour should be handled but ERNLLCA would recommend that an approach is adopted whereby a person is first cautioned by the chairman as to their conduct. Where poor behaviour continues the chairman should give what amounts to a final warning, explaining that the council (or committee) has the power to exclude. If that is insufficient to control the situation and problems persist, the chairman or a member of the council, can make a proposal that a named person (or persons) are excluded from the meeting owing to their disruptive behaviour. That proposal must be seconded and then voted on. A chairman **cannot** exclude anyone simply by a ruling from the chair; the decision must be made by the meeting. The power is limited to excluding for that meeting and cannot be carried over into future meetings.

In a situation where a person or persons continually disrupts meetings, it may be possible for more draconian action to be taken but a council in such a situation should first take advice.

Declarations of personal/non-pecuniary interests – charity

The nature of many parish and town councils is that members are often also trustees of local charities. Where a council, or committee, meeting is to discuss an issue relating to a charity, any members of the council who are trustees must declare a personal interest (which is referred to in the East Riding as a non-pecuniary interest). In a situation where it is the council which is the sole (sometimes called managing) trustee, the councillors are not trustees but it is still advisable for the same level of interest to be declared. Where such a level of interest has been declared, the councillor(s) may remain in the meeting; take part in the discussion; and then vote.

Where a council has retained prejudicial interests, some councillors (who are individual trustees) must consider if their personal interest has become prejudicial. A subjective approach must be taken to determining if prejudicial interest exists, in other words would a reasonable person in possession of the facts think that the interest is so great that it would affect the way the councillor votes. On declaring a prejudicial interest, a councillor can make a statement on the matter; answer any questions from fellow councillors; but must then leave the meeting.

There is therefore a disparity depending on the nature of the Code of Conduct which has been adopted by each council but councillors who, individually, are trustees must protect their personal situation and declare the appropriate level of interest. A trustee's first responsibility is to the trust of which they are a member.

Impact of the Living Wage

Councils will be aware that the Chancellor has announced the introduction of a “living wage” of £7.20 per hour, for employees over 25 years of age, to take effect as of 1 April 2016. In addition it appears that those council employees employed on National Joint Council for Local Government Service (the NJC) will receive a pay increase in 2016/2017 of 1%. All of this will have budget implications for councils because the Government has indicated that the “living wage” will rise to £9.00 per hour by 2020. At this stage it is not known what impact this plan will have on any pay awards which may be proposed by the NJC.

The lowest hourly rate for a Clerk is currently £8.613 and if the likely scenario of low NJC pay awards continues during the life of the current parliament, the minimum recommended hourly rate for Clerks in 2020 will be £9.053 per hour so this should not be a major problem. That is not the case for other employees who may currently be earning rates of pay from the level of the National Minimum Wage upwards. In order to bring wages up to the “living wage” from the National Minimum Wage by 2020, it could mean year on year increases in pay of around 5%. This will have to be factored into your council's budget over the next four years.

Transparency code

All eligible councils have been written to informing them of the new requirement for councils with an annual spend of less than £25,000 to have in place a website which is able to house the information required for publication by the Transparency Code. This initiative has come about because councils spending less than £25,000 per year are to be exempted from the need for an external audit after April 2017. The Government wishes to ensure that openness and transparency continue to lie at the heart of parish council life by ensuring that the public have electronic access to information about the finances and the general business of their council. All eligible councils have been sent a copy of the Transparency Code by ERNLLCA in which is listed all of the documents which must be published on the council's website and in what timescale.

Funding is available to help councils make this transition and the grant application form has been distributed. Completed grant applications should be returned to ERNLLCA which will carry out an initial assessment before forwarding the application to the grant body. Councils are urged to take advantage of the funding that is available. It is now a statutory requirement for eligible councils to have a website and publish, on that site, the information required by the Code.

Matters Arising from the minutes of the previous meeting

Some councils still retain the inclusion of “matters arising” on the agenda for meetings. It is important to remember that decisions can only be made out of items specified on the agenda. Councils are referred to the requirements, in this regard, of the Local Government Act 1972, Schedule 12, paragraph 10(2)(b). It follows therefore that a decision cannot be made out of an issue raised during “matters arising”. Any decision a council might inadvertently make is, at best, a non-decision or, at worst, a decision unlawfully made. This will be picked up by the council’s Internal Auditor and be referred to in their report. This raises the spectre of the External Auditor asking for an explanation of the expenditure incurred and the council having to pay for any subsequent investigation.

There is a growing and welcome trend towards “matters arising” not appearing on the agenda and being replaced by a written update from the Clerk on the status of all decisions made at the previous meeting. Clerks can obtain advice from ERNLLCA on an appropriate means of reporting.

Sector-led audit body

The means by which an external audit service is obtained is to change. A new sector-led body has been approved by Government which will facilitate an audit service from 2017 onwards. ERNLLCA will shortly forward guidance to councils and this will include details of the options available to councils. The default position is that all councils will be members of the new scheme but councils will be able to opt out and then make their own audit arrangements. Full details will be available when the national guidance is finalised.

Permission to record/film council meetings

Following on from the article in last month’s newsletter on this topic, enquiries have been made of ERNLLCA regarding “the right” of the chairman to require anyone wishing to film or record a meeting to first seek the permission of the chairman. This is not the case! Anyone can record or film a council, or committee, meeting and that person does not have to first seek permission.

Humber Hounds

The Humber Nature Partnership has asked ERNLLCA to forward this article to member councils.

Do you walk your dog around or near the Humber Estuary? Then why not join Humber Hounds? Humber Hounds is dedicated to help you and your dog enjoy the Humber Estuary, whilst helping to protect this special area and its wildlife. Membership is free and our members receive a goody pack and invitations to special events such as dog walks and training. All we ask is that members follow the [Doggy Do Code](#):

Do protect the internationally important wildlife that relies on the Humber Estuary

Do keep to paths and keep your dog under effective control when walking around the Humber

Do bag it and bin it

Do prevent your dog from chasing wildlife and animals

Do respect other visitors and keep your dog in site

Do follow requests on signs

The Humber Estuary is internationally important for wildlife and designated as a European Marine Site. During the winter months you can see thousands of birds using the Estuary. However, the birds can often be sensitive to dog movements on the shore. Tania Davey, Humber Hounds Project Manager said “dog walkers can help by keeping their dogs on a lead around these big flocks of birds”.

We would welcome Parish Council support for the Humber Hounds project. If you would like to get involved or would like further information, please see our [website](#) or [facebook page](#) or contact Tania at humberhounds@humburnature.co.uk or call 01652 631521.

Governance questionnaire

All member councils and parish meetings have been invited to take part in a consultation exercise about the future governance of the organisation. Participation is needed in order to ensure that any changes to our structure, the appointments we make and the decisions we take reflect the views of the membership. Although it is the views of member councils and parish meetings which are sought, any individual councillor or clerk who wishes to make observations is welcome to do so.

The first round of consultation ends on 30 November but analysis of returns will not commence immediately so responses will be accepted in the first week of December.

Issued by:

ERNLLCA, Suite 8, Waters Edge Business Centre, Maltkiln Road, Barton upon Humber, DN18 5JR

Tel: 01652 661617

Email: enquiries@ernllca.info

www.ernllca.info



Protecting Communities, Targeting Criminals, Making a Difference

Parish/Town News Release

Howdenshire Update for January 2016

1. Priority

Issue: Youths causing annoyance around the areas of the Church and playing fields in Gilberdyke.

Throughout January, officers will continue to patrol the above areas on Clementhorpe Road to deter any potential anti-social behaviour. Anyone caught engaging in anti-social behaviour will be dealt with under the FAIRWAY process jointly with East Riding of Yorkshire Council. It is unlikely that any discretion will be shown.

2. Meetings

PCSO Simon Palmer will be holding a "Police Drop In" surgery at the Travelling Library, Gilberdyke Memorial Hall car park, Clementhorpe Road, Gilberdyke on the following dates: 20th January (13:30-14:30) and the 24th February (14:00-15:00)

3. Crimes in your area

- A handbag accidentally left on a table outside a pub in Gilberdyke was stolen.
- Eggs have been thrown at a car in North Cave.
- Entry was gained into a secure property in Newport and items stolen. (A male is now in custody)

4. News and Appeals

SCAMS

Please remain wary of any unexpected emails, texts or phone calls from organisations asking you to make contact regarding scams and compensation payments. These emails often ask for your personal details and bank information and are designed to steal your personal information (some may ask for an up-front fee in return for advancing your compensation). Don't reply to the email /text and never pay any upfront fees if asked.

Any emails offering compensation, asking for a fee, or for personal information that comes from a government department or an agency or known organisations eg Microsoft or Apple may be a scam and should either be ignored or treated with great caution. It is a common tactic of scammers to use the names of big brands or official government departments to dupe consumers into thinking they work for them or that they represent authority. They also often use news reports about past cases to con victims into thinking that compensation is available.



Protecting Communities, Targeting Criminals, Making a Difference

Parish/Town News Release

If you have any concerns then you should only make contact with your provider directly – do not reply to the email/text and again if it's a phone call, inform the caller that you will ring back at a later date – do not ring back immediately and not on a contact number that they have given you either.

Lastly there have been several reports from the public receiving letters mainly from China (often with a UK postmark) informing them that a deceased relative or someone in China with the same name has left several million pounds in an account, that they are looking for help in ensuring that the money is sent to the person in the UK and that they will take a percentage in return for sorting out the paperwork etc. The letter which is often grammatically incorrect asks for you to treat the request as confidential and to contact them with your bank details etc and this is a SCAM too.

To report a fraud, call Action Fraud on 0300 123 2040 or log on to the Action Fraud Website for further information.

EAST RIDING PARISH NEWS

Keeping you up-to-date with news about your area

Issue 92 : **January 2016**



New Year, new you?

East Riding Leisure operates 10 sports and leisure centres across the East Riding providing quality health, sports and well-being facilities supported by a highly-trained team of dedicated staff, passionate about making a difference to customers' lives. These include the award-winning East Riding Leisure Beverley with its 90-station Tone Zone which opened in April, providing over 100 classes a week through its new dedicated spin studio and group X exercise studio.

Supported by fitness professionals, the Health Plus programme helps people achieve their goals and make long-term positive changes to their lives – all included as part of the membership. Services provided in partnership with Public Health deliver nationally-recognised health improvement programmes including:

- exercise referral
- cardiac rehabilitation
- Live Well
- free NHS Health Checks for 40-74 year olds.

One membership unlocks access to all 10 East Riding Leisure sites with prices starting from £23 per month. Casual users are welcome to 'pay-as-you-go'. You can find out more at eastridingleisure.co.uk

New Year bin collections

Collection dates across the East Riding for green, blue and brown bins will return to normal on Monday, 18 January. Revised collection dates are available at <http://bins.eastriding.gov.uk> New bin collection calendars have been posted to residents to show all dates up to Saturday, 24 December. You can also sign up to the council's free text reminder service – information is on the calendar and on the website.

Household waste and recycling sites are open from 10am to 5pm, for everyone who cleared out their garages during the Christmas break, or for disposing of excess packaging from presents.

Real Christmas trees can be recycled in the brown bin - remove all lights and decorations. Cards, wrapping paper and cardboard boxes can be put in the blue bin.

YORSwitch

The latest auction, its tenth, has again shown significant savings potential for customers. More than 4,500 customers registered, with average annual savings of around £230 each on their energy bills. Overall, 99 per cent of households registered could have saved if they had switched.

Results show more than 30 per cent of customers switching made a total saving in excess of £310,000 in this latest round. Total savings for East Riding households since the scheme started in 2013 now exceed £1.7 million.

The next YORSwitch auction is already open for registration. Offers are hassle-free, cost-free and obligation-free.

If you are interested, register before Monday, 1 February. The auction will take place the following day. The process is easy; East Riding of Yorkshire Council takes care of everything, making it as hassle-free as possible.

Residents can register their energy details on the YORSwitch website at: eastriding.gov.uk/YORSwitch or call (01482) 393939 and give the details – remember to have your latest energy bill to hand.



EAST RIDING
OF YORKSHIRE COUNCIL

Chairman's Awards

Time is running out to nominate someone for the Chairman's Awards. Town and parish councils have until the end of January to nominate someone from their community.

East Riding of Yorkshire Council presents the Chairman's Awards to individuals, businesses and organisations in the East Riding to recognise their achievements towards enhancing the well-being of the area in which they work and live.

The awards are split into five categories: community, built heritage, environment, business and sport.

The closing date for nominations is Sunday, 31 January. To submit a nomination, visit eastriding.gov.uk/chairmansawards or call (01482) 393260.

Be sugar smart

NHS England's Change4Life has launched a new healthy eating campaign to help families find out how much sugar lurks in their food and drink, and make healthier choices.

You can download the Change4Life Sugar Smart app for free from the App Store or Google Play. By scanning the bar code on foods in your fridge, cupboards and when you shop you can see the total amount of sugar in everyday food and drink.



Make giving blood a New Year's resolution

More than half of all donors are over 45 years-old, so it is important that younger people are recruited to donate blood now and in the years to come. With less than 3 per cent of people aged 17-70 giving blood in the last year, NHS Blood and Transplant is asking people in East Yorkshire to make a New Year's resolution that saves lives.

Giving blood for the first time is an inspirational way to start 2016. By giving up just one hour, residents could save or improve up to three lives. Donors get a warm welcome, a refreshing drink, and the famous biscuits.

NHS Blood and Transplant always needs first-time donors to replace those who can't donate any more, and to ensure they have the right mix of blood groups to meet patient needs. An increase in donors can help ensure that patients have access to the blood they need, when they need it.

NHS Blood and Transplant needs donors from all blood groups and communities but is particularly looking for donors with the universal blood group O negative, as well as from groups A negative, B negative, AB negative and new donors from black and Asian communities. Don't worry if you don't know your blood group.

You can book an appointment to donate at blood.co.uk or call 0300 123 2323 (charged at national rate and may be part of your inclusive minutes) to find the nearest session. It is also easy to book through mobile apps for Windows, Android and Apple devices. To download the app, search 'NHSGiveBlood' in the app store.

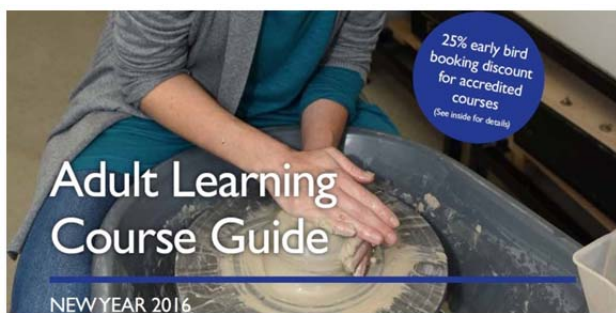
Protect and immobilise your property

Humberside Police is recommending that residents make a New Year's Resolution to keep new Christmas presents and New Year sales purchases safe, by registering them for free on the property logging website immobilise.com

This crime prevention initiative means lost or stolen items can be quickly identified when they are recovered and returned to the rightful owner. It also increases the potential to catch a criminal in possession of stolen goods.

Immobilise is a secure online register of valuable property; anything from mobile phones, bikes, tools, electricals and gardening equipment. It is free to register and takes just a few minutes to sign up. Ownership details can be viewed by police across the country on the National Mobile Property Register and allows police officers to check recovered items and instantly find the owner.





Sign up to an adult learning course

East Riding of Yorkshire Council has launched the 2016 adult learning course guide, aimed at people aged 19 years and over. The new guide is full of courses that can help improve skills to get a job, get a new qualification or learn something completely new. New for 2016 is a 25 per cent early-bird discount offer for accredited courses booked in January.

Courses on offer include counselling, Supporting Teaching and Learning in Schools (STLS), ECDL (European Computer Driving Licence) and photography. Also new are maths, English and psychology GCSE head-start courses, which allow learners to start studying for a GCSE in January, receiving extra tuition before the main exam in May 2017.

The course guide also has a selection of community learning courses on offer such as ceramics, pottery, flower arranging, patchwork and quilting and the ever-popular mindfulness courses.

Course guides are available at East Riding libraries, leisure centres, adult learning centres or customer service centres, and are being distributed to local community venues. Or, download a copy and look for a local centre at eastriding.gov.uk/learn

WHAT project

A range of organisations across East Yorkshire have joined forces to tackle rising rates of fuel poverty and bring warmth to cold homes. Fuel poverty affects over 11,900 households in the East Riding of Yorkshire and is a contributing factor to the 4,100 excess winter deaths in the winter of 2014-15.

There are an additional 3,000 emergency admissions to hospital each year as a result of cold conditions, and some 108,000 children are believed to live in fuel-poor households across Yorkshire and the Humber, making them vulnerable to ill-health.

The Warm Homes Action Team (WHAT) is led by Humber and Wolds Rural Community in East Yorkshire, funded by the British Gas Energy Trust's Healthy Homes Fund. It will work in 21 target areas to the end of 2016. Referrals can be made for residents with a health condition made worse by living in a cold home. You can see details of the areas to be covered and the individual villages on the website at hwrcc.org.uk

For more information on the project contact Peter Hirschfeld on (01652) 637700 or email peter.hirschfeld@hwrcc.org.uk

Find out about fostering

Sometimes children are unable to live with their own family. This may be due to a crisis in the family, ill health, relationship difficulty or bereavement. It could also be because they have experienced abuse and need to be protected.

That's where foster carers come in, looking after these children in their own homes, allowing time for difficulties to be sorted out.

Could you help some of these vulnerable young people? Have you ever thought about becoming a foster carer? Why not come along to an information event on Wednesday, 20 January at Tickton Grange Hotel, near Beverley, at 6pm.

The event will give people an opportunity to talk to fostering social workers and discuss suitability, meet foster carers and their birth children, and find out about free professional training and excellent support.

Prospective foster carers should ideally be over 25, and can be single, married or co-habiting. People with or without families, heterosexual, lesbian or gay, can be foster carers.

Anyone interested in finding out more can contact the fostering team on (01482) 396673 or email fostering@eastriding.gov.uk



Swanland Heritage Centre

Although the centre will be closed until March, this doesn't mean that work has stopped. During the break, the volunteers will continue to update the website, filling the hanging frames with other interesting village information and generally making good use of the time.

Interviews with long-standing local residents will be transcribed. Other ways of adding to the increasing volume of information are being explored – if you have any knowledge that could be included, the Centre would be glad to hear from you.

You can also become a Friend of the centre at £10 per year or volunteer your time. You can find out more at swanlandheritage.info

Beverley Folk Festival

Plans for the event at Beverley Racecourse from Friday, 17 – Sunday, 19 June 2016 have been announced.

A raft of headline acts include the multi-award winning Kate Rusby, folk-rockers Steeleye Span and rising stars, The Young 'uns.

Winter Special weekend tickets are on sale at £95, a saving of £20 on the full price. Concession and family deals are also on offer. You can find out more, and book, at the website beverleyfestival.com



£300k for local crime reduction

The Crime Reduction Fund was launched in 2014 by the Police and Crime Commissioner for Humberside. Over £300,000 has already been given to a range of projects aimed at cutting crime and making local communities safer.

The Fund will provide around £1.5m for community projects over four years. Community groups, charities and organisations with an interest in crime reduction and public safety can bid for grants from the scheme. Youth projects have also benefitted significantly from funding.

Examples include grants for CCTV equipment, security gates for alleyways to reduce burglaries and anti-social behaviour, and projects to divert young people at risk of committing crime into more positive activities. Bids are particularly welcome from smaller groups who do not have much access to funding.

To get further information or discuss a potential project, call Dave Hudson on (01482) 220793 or email david.hudson@humberside.pnn.police.uk. Full details on how to apply, and a list of projects funded so far are on the Police and Crime Commissioner's website at humberside-pcc.gov.uk

Holderness Foodbank

Holderness Foodbank is holding a coffee morning and tombola on Saturday, 16 January at Toll Gavel United Church in Beverley from 10-11.45am. Donations of cakes for the cake stall and prizes for the tombola, and offers of help selling tickets and manning the tombola are welcomed.

If you feel able to help, or would like to arrange for donations to be collected, contact Richard Newby at foodbev@hotmail.co.uk

Give us your news

Parish News is happy to receive comments from town and parish councils about the content and format of this newsletter – please feel free to get in touch and give us your opinions.

We welcome proposals for articles but cannot guarantee to print everything, as space is limited. If you would like to contribute to Parish News call **Brad Webster** on (01482) 391431, or email brad.webster@eastriding.gov.uk



Laxton Parish Council

Community Emergency Plan

.

Section I - Activation of the Community Emergency Plan

WHEN THE PLAN WILL BE ACTIVATED

This plan will be activated when a designated member of the Community Emergency Management Team considers it necessary to take action in response to an incident, and when action cannot be taken effectively without triggering the arrangements outlined in this document. The Community Emergency Team will often be notified by the local authority, emergency services or residents of a potential emergency.

RESPONSIBILITY FOR ACTIVATING THE PLAN

The Chair or Deputy Chair of the Parish Council can activate the plan. In their absence, any two other Councillors can activate the plan.

Community Emergency Team

Name	Contact Information	Home address	E-mail address
Win Collins	01430 432664	12 Church Close, Laxton	
John Bray	Mobile - 07840646010 Work - 01430 430505	North Side Farm, Laxton	john.bray47@googlemail.com
Gillian Moore	W - 01405 761746 (H) 01430 430946 (M) 07968 001027	Vicarage Farm, Front Street, Laxton	Gillian@vicaragefarm.eu
Gareth Newton	W – 07702811970 M – 07834 986701 H – 01430 430436	4 St Peters Lane Laxton DN14 7UA	gareth.newton@drax.com gaz.87@hotmail.co.uk
Sue Sweeting	M – 07834 986701	28 Front Street, Laxton	Suesweet52@outlook.com
Sue Yarrow	H – 01430 430436	7 St Peters Lane, Laxton	royalistmymins@yahoo.co.uk

Section 2 - Emergency Management Team Initial Actions Checklist

KEY ACTIONS WHEN THE PLAN IS ACTIVATED

- IN AN EMERGENCY DIAL 999. Follow the Emergency Services advice at all times, and always be aware of your own safety and the safety of those around you.
- Gather as much information about the situation as possible - eg:
 - Location of the emergency
 - What has happened?
 - Number of people and/or properties involved.
 - The type of support that might be needed (eg moving items upstairs, providing immediate shelter, basic household tasks).
 - Tune into your local radio station for updates.
 - Make contact with the representatives of any responding organisations at the scene.
- Consider whether you can work effectively from your current location, or whether you need to move to the Victory Hall (see section 3).
- Notify the rest of the emergency team and request they meet at the nominated location.
- Decide which local resources should be mobilised initially to support the community. Consider:
 - Sandbag Store / Pumps and Emergency Equipment – See Section 3
 - Salt Spreader – See Section 3
 - Emergency Shelters – See Section 3
- Consider giving a member of the emergency team the task to co-ordinate the allocation of the resources.
- Consider asking for additional members of the community (volunteers) to help with the response. The type of support that would be welcomed changes from emergency to emergency but might include:
 - Helping people move valuable and sentimental items upstairs.
 - Helping deploy any flood protection products they might have.
 - Providing some immediate shelter if people have had to leave their homes.
 - Looking after pets.

- Providing lifts to family and friends.
- Doing basic household tasks such as shopping.
- Request that one Councillor checks their emails regularly for updates from East Riding of Yorkshire Council.
- Let residents know that you are there to help. Consider giving them a telephone number to contact at the Victory Hall.
- Help communicate any warning information messages, and recommend that people tune into the local radio station.
- Establish contact with neighbouring Parish/Town Councils and ask for/offer support if appropriate
- Ensure that any members of your community engaged in the response are not putting themselves at risk. Make sure they are acting lawfully (eg not speeding), carefully and are not carrying out tasks and activities that they are not qualified to do.

Standard Agendas

Emergency Management Team

Initial Meeting Agenda

- 1) Situation Report
- 2) Aim and Objectives of Response
- 4) Actions Required
- 5) Time of Next Meeting

Emergency Management Team

Subsequent Meeting Agenda

- 1) Any Items Requiring Urgent Attention

BREAK OUT TIME TO ACTION URGENT ITEMS AS AGREED ABOVE

- 2) Update on Situation
- 3) Review Aim and Objectives
- 4) Review Outstanding Actions
- 5) Actions Required
- 6) Time of Next Meeting

Section 3 - Community Resources available for use during an emergency

COMMUNITY INCIDENT ROOM

If an emergency team is brought together, it has been agreed that they will meet in one of the following location(s):

- Victory Hall
- Bricklayers Arms

IDENTIFIED INCIDENT ROOM

Location	Keyholder(s)	Contact Information
Victory Hall	Councillor Collins Julie Welsh	01430 432664 01430 431377
Bricklayers Arms		01430 432029

EMERGENCY BOX

An emergency box has been kept at Laxton Victory Hall. it contains:

- A copy of this plan
- A map of the area.
- Paper and pens.
- Register of electors.
- Wind up/battery operated radio.
- Wind up/battery operated torch
- Phone Book

COMMUNITY EMERGENCY SHELTERS

Details of your emergency shelter(s) may be shared with the Emergency Services in case they need to identify a safe location to evacuate residents to.

- 1) Victory Hall – See above for contact information
- 2) Bricklayers Arms – See above for contact information
- 3) St Peter's Church - Rev'd Graham Thornalley - Tel: (01430) 410096

COMMUNITY EQUIPMENT STORE

The Parish has two stores of community Equipment Store:

Manor Farm Laxton	Old Chancel, Laxton
<ul style="list-style-type: none">• Infrared kerosene spacer heater• 2.2 kva Petrol generator• 700W Petrol generator• 1000 lts/min Petrol water pump• 230V 20w Led worklamp• 230V 400w Halogen worklight• Shovels• High Visibility Tabards• Empty Sandbags• First Aid Kits	<ul style="list-style-type: none">• Honda 2200 Generator• WB20XT Water Pump• Input Hose• Output Hose• 4 Explorer Torches• Sack Barrow• First Aid Box
Accessed by the key safe next to the store. The access code is 1979.	Key Holders are Win Collins and XXXXX

COMMUNITY SAND STORE

The Community Sand store is at Manor Farm, Laxton. A small number of volunteers will be identified at the time of an emergency and will be supervised by a Parish Councillor. They will fill sandbags for allocation to residents or for distribution to other volunteers. Sand is kept on a pallet so it can be transported with empty bags to location needed and filled at site.

COMMUNITY DEFIBRILLATORS

Community defibrillators are fitted to the Bricklayers Arms and to the Sowerbys Farm, Saltmarshe. The cabinet code is C159X.

OTHER RESOURCES

Forklifts, tractors and other farming resources:

Northside Farm, Laxton	David Bray	07597 955778
	Tom Bray	07783 504381
	John Bray	07840 646010
Manor Farm, Laxton	Derek Kaye	01430 430793 07710 344599
Dairy Farm, Saltmarsh	John Sweeting	01430 430677 07802 306900
Waterside Farm, Metham	John Williamson	07801 667918 01430 430295

LAND DRAINAGE

Sweeting Bros, Cotness	Len Sweeting	07836 531955 01430 430762
	Dan Sweeting	07710 192661
Ouse and Humber Drainage Board	Andrew Morritt	01430 430237 07831 390414

Section 4- Warning and Informing

This section contains public information for various incident types that your Community Emergency Team may be able to help cascade to members of the community. Emergency responders may also issue advice through their website, emails to you and through radio announcements.

- Heavy Winds
 - Secure loose objects such as ladders and garden furniture.
 - Close and securely fasten doors and windows, including garages.
 - Park vehicles in a garage or in a place clear of buildings, trees and fences.
 - Stay indoors if possible.
 - If you need to go outside, do not walk or shelter close to buildings or trees.
 - Don't carry out repairs whilst the storm is in progress.
 - Do not drive unless your journey is essential and avoid exposed routes.
 - Do not touch electric/telephone cables which may have to be blown down.
- Heat Wave
 - Try and plan your day to stay out of the heat, keep rooms shaded and, where possible use a fan.
 - If you must go out, stay in the shade, wear a hat and loose fitting clothing.
 - Drink plenty of fluids.
 - Don't leave animals unattended in cars in warm weather.
 - Seek medical help if you suffer from heat exhaustion or heat stroke. Remain somewhere cool, sponge yourself with cold water and drink plenty of fluids.
- Snow and Ice
 - Carry an emergency car kit - mobile phone, car charger, first aid kit, warm waterproof clothes, blanket, food, water, torch (with spare batteries).
 - Inform a friend or family member of your intended travel arrangements and expected arrival time.
 - Wear a hat.
 - Watch out for signs of hypothermia - uncontrollable shivering, slow or slurred speech, drowsiness and memory lapse.
 - Don't drive unless you absolutely need to.
- Flooding
 - Listen to your local radio and TV weather forecasts for advice from the emergency services.
 - Move your car to higher ground.

- Empty furniture drawers and cupboards. Place the contents and any furniture you can upstairs.
- Fasten plastic bags round the legs of wooden furniture to help minimise absorption of water.
- Turn off mains gas and electricity.
- Put plugs in sinks and weight them down to prevent backflow from the drains. Weigh down the loo seat too.
- Bring caged outdoor pets inside, move all pets with food, water, bedding and litter trays upstairs.
- Make sure any valuable or sentimental items and important documents are safe.

REMEMBER - We do not encourage communities to enter floodwater. Moving floodwater can be extremely powerful and easily knock people off their feet. There could also be unseen obstructions that could be hard or sharp, potentially causing serious injury, and there are risks of entanglement. Flooding can dislodge manhole covers that people could fall into and become trapped. Remember, floodwater will probably also contain raw sewage. . If you need to walk through floodwater consider using a pole (brush handle) to test the ground in front of you

Always wash your hands/arms/legs with hot water and soap if you do come into contact with floodwater.

DO NOT allow children to play in floodwater.

Put any flood protection in place.

Encourage members of the community to check on their neighbours, especially if they are elderly or live on their own.

If people are advised to evacuate their homes

- If people are advised to evacuate their homes, or are advised to evacuate, try and remind people of the steps they should take:
 - Grab 'Go bag' and check contents.
 - Turn off electricity, gas and water supplies and unplug appliances.
 - Take their mobile phone and charger.
 - Take some spare clothes.
 - Take prescribed medication with them.
 - Take cash and credit cards.
 - Lock all doors and windows.

If they leave by car, take bottled water, a duvet or blankets and tune into the local radio for emergency advice and instructions.

Section 5 - Emergency Contact Directory

Village Emergency Telephone System

These residents have volunteered to be part of the Village Emergency Telephone System.

Name	Contact Information
John Bray	01430 430505
Sue Sweeting	07834 986701
Jane Thompson	01430 430343
Michael Yarrow	01430 431009
Angela Timm	01430 431249
Victoria Burdett nee Holland	01430 430496
Carol Furlong	01430 432065
Tiffany Harteveltdt	01430 431731
Stuart Kaye	07740702005
Kate Whyte	07974085734
Sarah Colclough	01430 436354
Jaqueline Goulden need to double check	

WARD COUNCILLORS

Name	Contact Information	E-mail address
Councillor Aitken	07721 411620	Councillor.aitken@eastriding.gov.uk
Councillor Wilkinson	07717 364525	Councillor.nigel.wilkinson@eastriding.gov.uk
Councillor Evans	07768 096755	Councillor.evans@eastriding.gov.uk

DETAILS OF NEIGHBOURING TOWN AND PARISH COUNCILS

Name	Town/Parish	Contact Information	E-mail address
Jean Ingram	Kilpin Parish Council	01430 626182	Kilpinpc@btinternet.com
Sue Nicholson	Gilberdyke Parish Council	01430 441064	theparishclerk@gilberdyke.org.uk
Sue Nicholson	Blacktoft Parish Council	01430 441064	clerk@Blacktoft.org.uk

OTHER USEFUL CONTACT DETAILS -

Organisation	Telephone Number	Website
<ul style="list-style-type: none"> Network Rail: <ul style="list-style-type: none"> Level Crossing Manager Gilberdyke Signal Box York Signal Box (24hr) East Riding of Yorkshire Council Electricity Emergency Service and Supply Failures Emergency Response Only – Ambulance, Coastguard, Fire and Police Environment Agency Floodline Environment Agency Incident Hotline Gas Emergency Service 	<ul style="list-style-type: none"> 07808 245535 01430 441647 01904 718075 01482 393939 08457 331331 999 0345 881188 0345 80 70 60 	<ul style="list-style-type: none"> www.eastriding.gov.uk www.environment-agency.gov.uk www.environment-agency.gov.uk www.northerngasnetwork

OTHER USEFUL CONTACT DETAILS -

Organisation	Telephone Number	Website
and Gas Escapes	• 0800 111 999	s.co.uk
• Maritime and Coastguard Agency Non Emergency	• 01262 672317	• www.dft.gov.uk/mca
• MET Office		• www.metoffice.gov.uk
• NHS	• 111	• www.nhs.uk
• Police Non Emergency	• 101	• www.humberside.police.uk
• Yorkshire Water	• 08451 242424	• www.yorkshirewater.co.uk
Radio Humberside - Tune in to 95.9FM or 1485am - www.bbc.co.uk/humber		

Section 6) Plan Publication and Information

PLAN PUBLICATION

Electronic copies of this plan have been e-mailed to:

- heps@eastriding.gov.uk <
- All Parish Councillors

The original electronic version of this plan is

- By the Parish Clerk

Hard copies of this plan are kept at:

- Victory Hall

PLAN MAINTENANCE

The plan should be reviewed every one year. During the review every section of the plan should be checked for accuracy (telephone numbers, resource lists etc). The Parish Clerk will have responsibility for reviewing the emergency plan and should report back the Parish/Town Council meeting to confirm that a review has taken place.

Any updates to the plan, or lessons that have been learned from exercises, should be approved by the Parish Council before the plan is changed.

The Parish Clerk is responsible for providing an updated version of the plan to all plan holders.

Laxton Parish Council

Accounts for Payment

January 2016

Payee	Details	Total	VAT
Alan Bravey	Salary - January	82.61	
Post Office	PAYE	55.20	
Zurich	Insurance 2016	251.85	
Alan Bravey	Reimbursement for cost of Printer	171.37	28.56
Alan Bravey	Reimbursement for cost of Laptop	369.98	61.66
W Bray and Sons	Reimbursement for cost of Petrol for Community Emergency Equipment	16.69	